

WALNUT TREE CLOSE





WALNUT TREE CLOSE GUILDFORD, SURREY, GU1 4RW

Modern one bedroom apartment in an excellent town centre location with parking

Available: 15th November 2024

£1,450 PCM (Per Calendar Month)

Flat, 1 Bedroom, 1 Bathroom, 1 Reception,
Unfurnished

Key Features

- Very central apartment
- Parking for one car
- One bedroom
- Living Room
- Available November



THE PROPERTY

Description

This top floor apartment is presented in a modern fashion throughout and includes a light, south facing, open plan living room and kitchen with hard flooring and integrated appliances including a hob, electric oven, dishwasher, fridge, freezer and washing machine. The bedroom is carpeted with a south facing aspect. There is a bathroom with a shower over the bath. The property also benefits from one off street parking space.

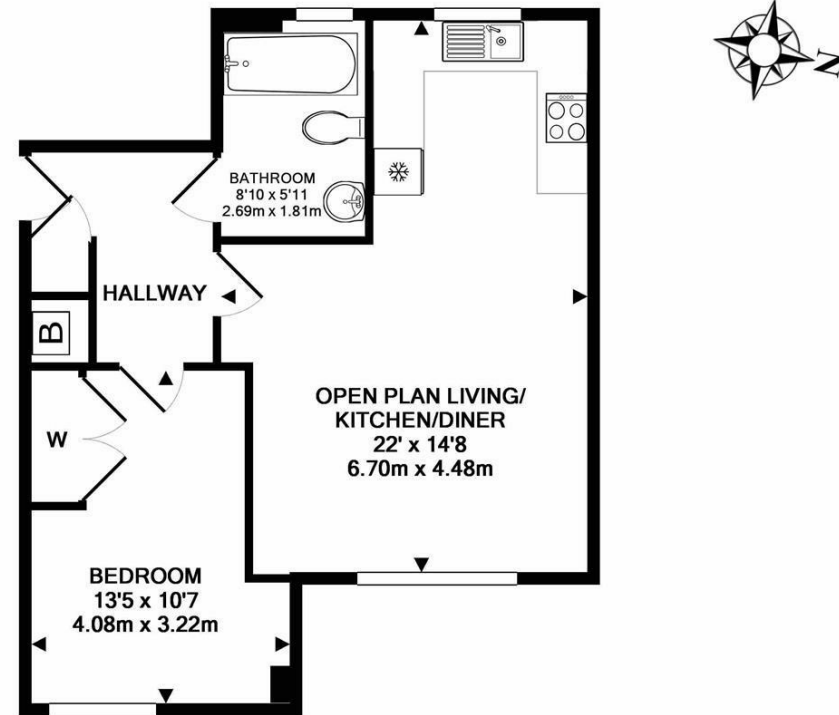


Location

Abbots Yard is located in a hugely convenient location for Guildford town Centre and the main line station both within walking distance.

The property is available in November

EPC Band C
Guildford Borough Council tax band C
Holding Deposit £334
Available November



TOTAL APPROX. FLOOR AREA 501 SQ.FT. (46.5 SQ.M.)

Whilst every attempt has been made to ensure the accuracy of the floor plan contained here, measurements of doors, windows, rooms and any other items are approximate and no responsibility is taken for any error, omission, or mis-statement. This plan is for illustrative purposes only and should be used as such by any prospective purchaser. The services, systems and appliances shown have not been tested and no guarantee as to their operability or efficiency can be given
Made with Metropix ©2018

Guildford

Poyle House 24 Epsom Road
Guildford
Surrey
GU1 3LE

Tel: 01483 407600

