

SANDFIELD COURT



SANDFIELD COURT

GUILDFORD, SURREY, GU1 4LX

Available: 17th October 2024

£2,000 PCM (Per Calendar Month)

Flat, 3 Bedroom
2 Bathroom, 1 Reception
Part furnished

Summary

Three double bedroom first floor flat, modern development with gated off-street parking for one car, moments from Guildford's cobbled High Street and all amenities. Available in October.

Key Features

- Town centre location
- Three bedrooms
- Furnished apart from the third bedroom
- Gated off street parking
- Two bathrooms
- Available October





THE PROPERTY

Description

The property comprises an entrance hall with video entry telephone leading to an open plan living/ kitchen including dishwasher, fridge/freezer, washing machine and dining area with Juliette balcony. The principal bedroom benefits from ample fitted storage with en-suite shower room. You will also find two further double bedrooms and a family bathroom.

The property also benefits from an allocated parking space which has secure gated access.



Location

Sandfield Court is located in the centre of Guildford, walking distance to all of the shops, restaurants and bars as well as Guildford station, providing direct links to London Waterloo.

Guildford Borough Council Tax Band D

EPC Rating B

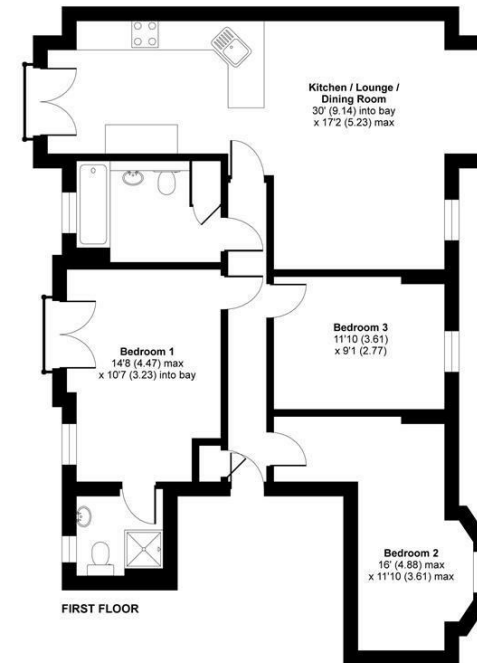
Holding Deposit: £461

Available October



Sandfield Court, The Bars, Guildford, GU1

Approximate Area = 971 sq ft / 90.2 sq m
For identification only - Not to scale



Floor plan produced in accordance with RICS Property Measurement Standards incorporating International Property Measurement Standards (IPMS2 Residential). © nichocom 2021. Produced for Grantleys. REF: 792004

Guildford

Poyle House 24 Epsom Road

Guildford

Surrey

GU1 3LE

Tel: 01483 407600

