



VINCENT JAMES
ESTATE AGENTS

90, THE
CRESCENT



£600,000



90, THE CRESCENT

Vincent James Estate Agents are proud to present this stunningly renovated four-bedroom Victorian residence, nestled in one of the most sought-after pockets of Northwich: The Crescent. This impeccably maintained property seamlessly marries its timeless period features with modern elegance, offering an array of open-plan living and entertaining spaces. Conveniently located, The Crescent boasts proximity to esteemed educational institutions, including Sir John Deane's College, The County High School Leftwich, Hartford Primary School, and The Grange, making it an ideal choice for families seeking both luxury and convenience.



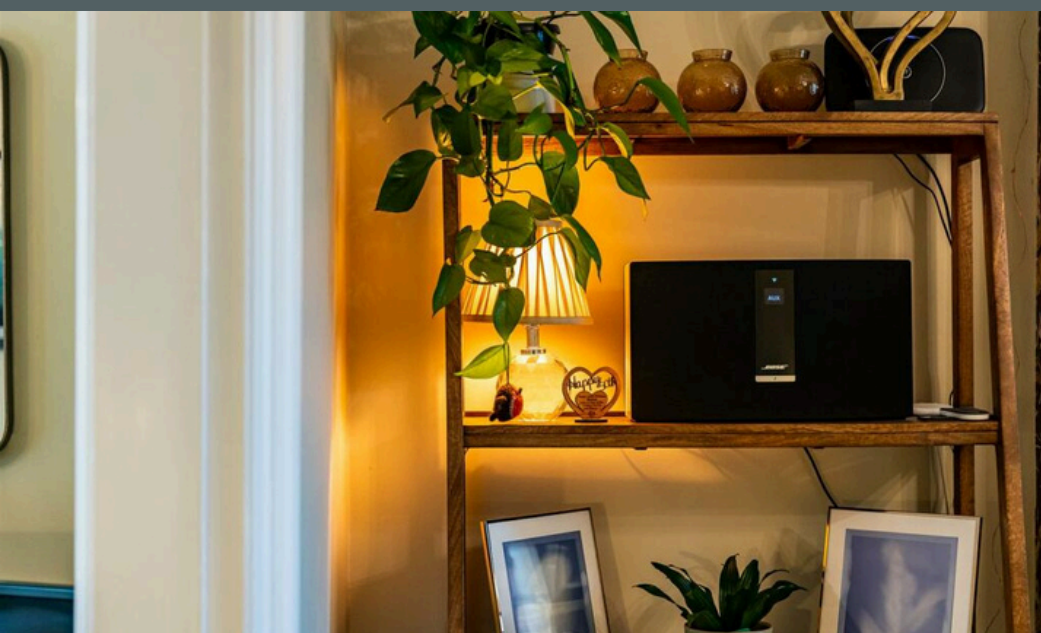
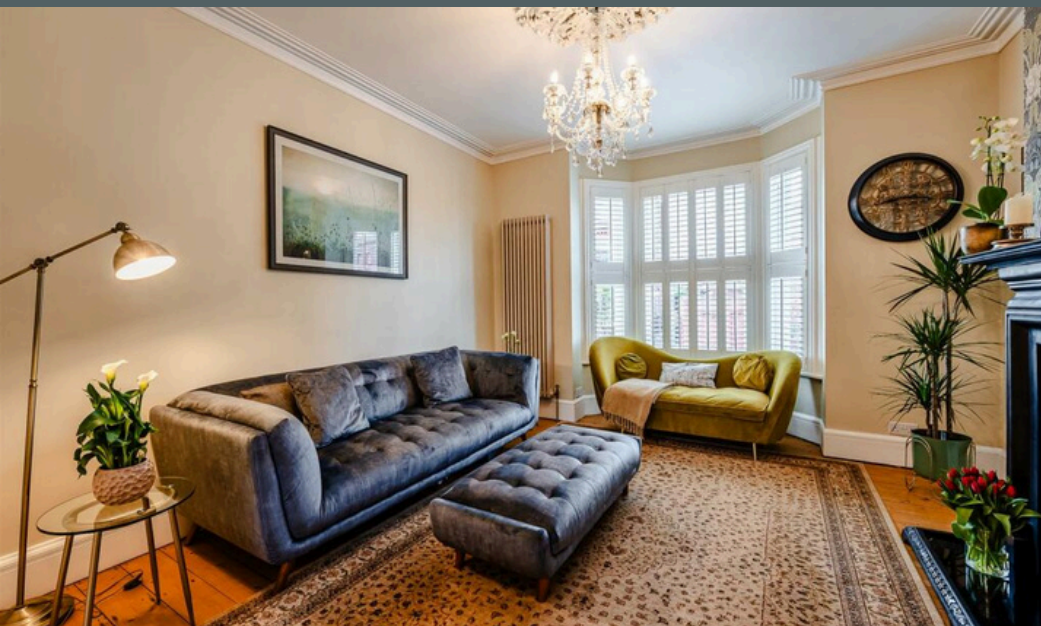
FEATURES

- Four Bedroom Victorian Home
- Extremely Popular Location
- Walking Distance to the River Weaver
- Beautifully Presented
- Open Plan Living & Entertainment Spaces
- Spacious Rear Garden with Outer Buildings
- Cinema Room / Office
- Four Storey Accommodation
- Underfloor Heating

3.66M X 3.51M (12 X 11'6) / 3.99M X 3.81M (13'1 X 12'6)



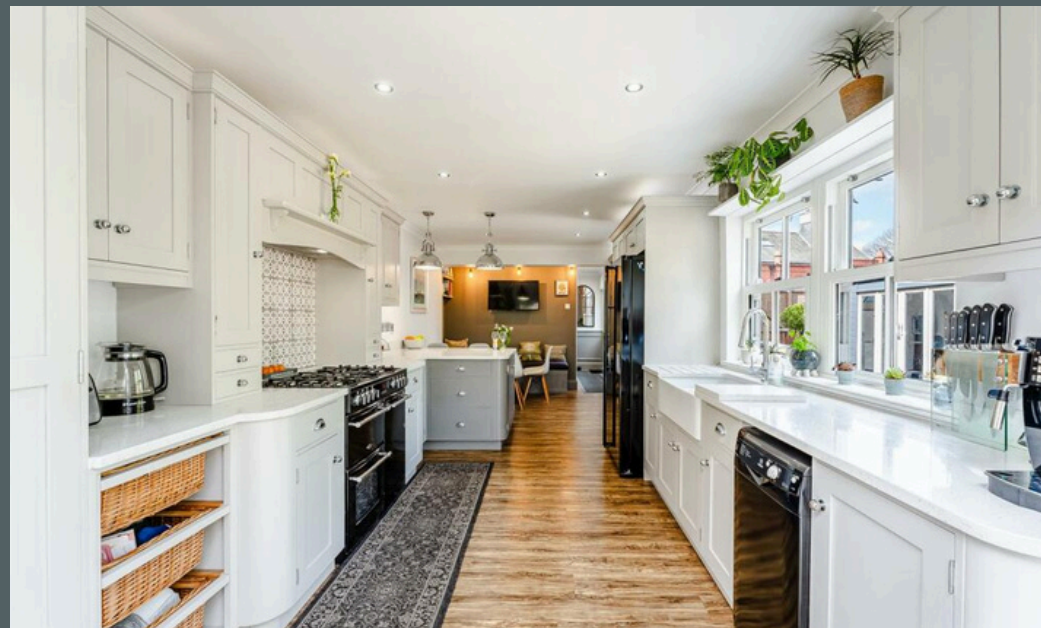
LOUNGE & LIVING SPACE





7.32M X 2.92M (24 X 9'7)

KITCHEN DINER



3.45M X 3.38M (11'4 X 11'1)



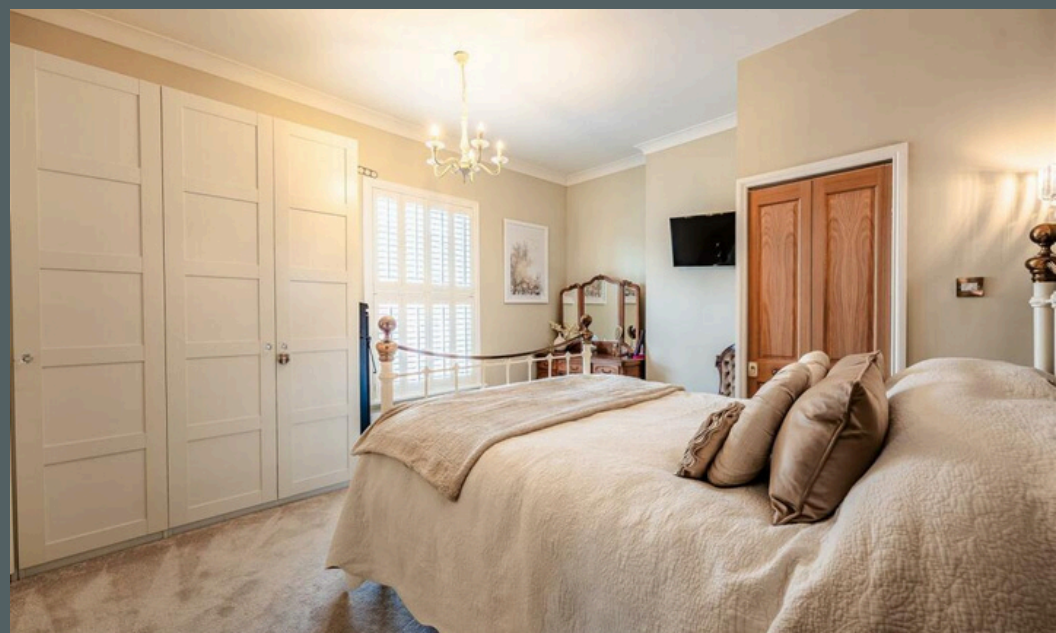
CINEMA ROOM & DOWNSTAIRS BATHROOM





3.51M X 5.03M (11'6 X 16'6)

MASTER BEDROOM



3.78M X 2.87M (12'5 X 9'5)



BEDROOM TWO





3.07M X 1.96M (10'1 X 6'5) / 3.05M X 1.83M (10 X 6)

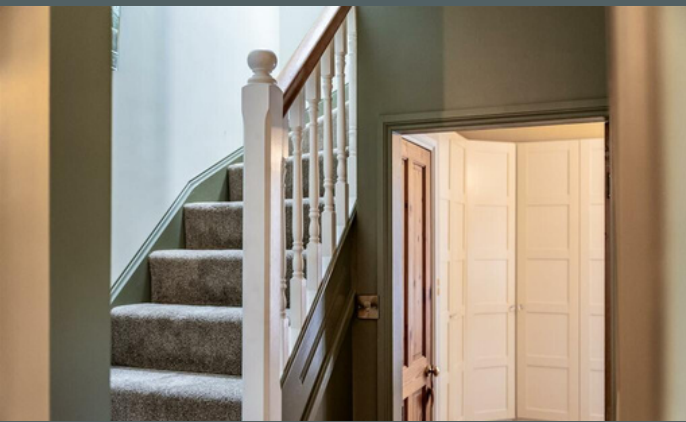
BEDROOM THREE & MEDITATION ROOM



4.65M X 2.82M (15'3 X 9'3)



BEDROOM FOUR





FAMILY BATHROOM





REAR GARDEN





VINCENT JAMES

ESTATE AGENTS