



27 Clickers Drive Upton, Northampton, NN5 4ED

Nestled within the highly sought-after development of Upton, this impressive five-bedroom mock Tudor-style townhouse combines timeless character with modern comfort, and benefits from NO ONWARD CHAIN.

Ideally positioned overlooking greenery to the front, and just moments from Sixfields Leisure and Retail Park, the property also offers superb transport links via the M1, A45, and A43—making it perfect for commuters and families alike.

Generously proportioned throughout, this elegant home opens with a large and welcoming entrance hall, with high ceilings, setting the tone for the space and light that follows. The modern fitted kitchen is beautifully appointed with integrated appliances, while the expansive lounge diner provides a superb setting for entertaining, with French doors flowing seamlessly onto the private rear garden.

Guide price £350,000

27 Clickers Drive

Upton, Northampton, NN5 4ED



- Prestigious mock Tudor-style townhouse in highly sought-after Upton
- Large lounge diner with French doors to garden
- Driveway and garage to the rear
- Offered with no onward chain
- Overlooks greenery to the front aspect
- Modern fitted kitchen with integrated appliances
- Gas central heating and double glazing
- Five spacious bedrooms, including principal suite with en-suite
- Contemporary family bathroom plus guest WC
- Excellent road links: M1, A45, A43

Entrance Hall

Kitchen

12'2" x 9'1" (3.72m x 2.79m)

Lounge/Diner

16'10" x 19'1" (5.15m x 5.84m)

Guest WC

Bedroom One

17'11" x 13'3" (5.47m x 4.04m)

En-Suite

Bedroom Two

14'4" x 10'0" (4.39m x 3.07m)

Bedroom Three

14'9" x 9'10" (4.51m x 3.00m)

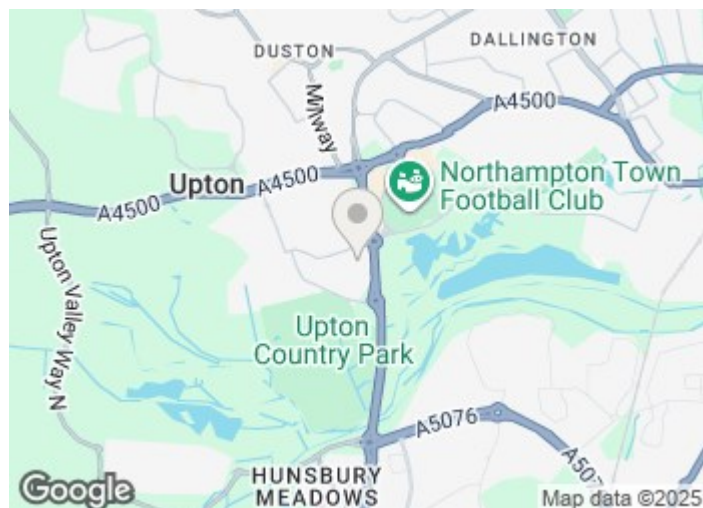
Bedroom Four

7'3" x 11'3" (2.21m x 3.43m)

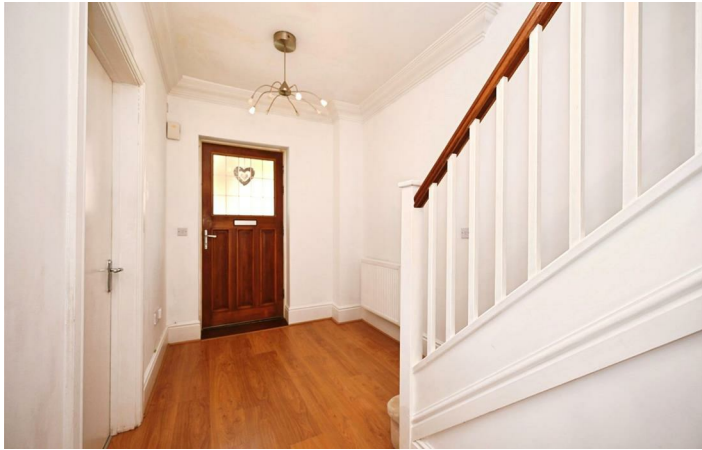
Bedroom Five

10'5" x 6'6" (3.19m x 1.99m)

Family Bathroom



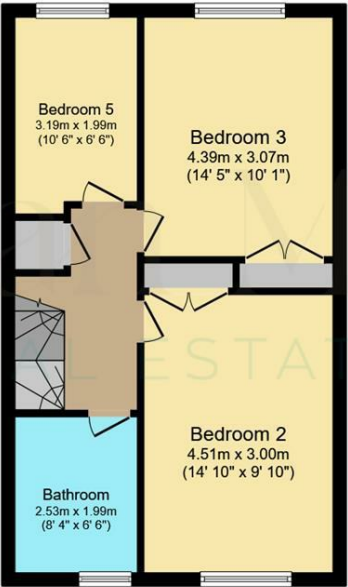
Directions



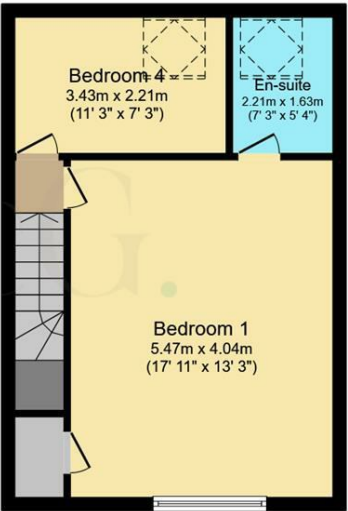
Floor Plan



Ground Floor
Floor area 50.0 sq.m. (538 sq.ft.)



First Floor
Floor area 46.4 sq.m. (500 sq.ft.)



Second Floor
Floor area 40.2 sq.m. (432 sq.ft.)

Total floor area: 136.6 sq.m. (1,470 sq.ft.)

This floor plan is for illustrative purposes only. It is not drawn to scale. Any measurements, floor areas (including any total floor area), openings and orientations are approximate. No details are guaranteed, they cannot be relied upon for any purpose and do not form any part of any agreement. No liability is taken for any error, omission or misstatement. A party must rely upon its own inspection(s). Powered by www.Propertybox.io

These particulars, whilst believed to be accurate are set out as a general outline only for guidance and do not constitute any part of an offer or contract. Intending purchasers should not rely on them as statements of representation of fact, but must satisfy themselves by inspection or otherwise as to their accuracy. No person in this firms employment has the authority to make or give any representation or warranty in respect of the property.

