

The Cube East 200 Wharfside Street , Birmingham, B1 1PR

This STUNNING, HIGH SPECIFICATION, two bedroom apartment is situated on the 17th floor of The Cube East development, offering an OUTDOOR TERRACE area with spectacular city skyline, and canal views, within the sought after Mailbox location of the city centre.

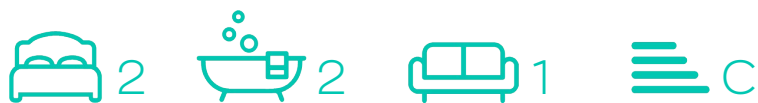
This spacious, luxurious apartment boasts approximately 800sq.ft of accommodation, and is offered for sale as a turn-key opportunity, with NO ONWARD CHAIN.

There is a spacious entrance hall, with storage cupboard, an open plan living/dining area with full height picture window, and sliding door access out on to the patio/terrace area perfect for al fresco dining and entertaining during the warmer months, with stunning views over the city.

The fully integrated Poggenpohl kitchen boasts granite work surfaces, and Bosch integrated appliances.

Guide price £270,000

The Cube East 200 Wharfside Street , Birmingham, B1 1PR



- Stunning Two Bedroom Apartment
- Private Outdoor Terrace Facing City Centre With Canal Views
- 24hr On Site Security
- No Onward Chain
- Two Bathrooms With Villeroy & Boch Sanitaryware
- Poggenpohl Kitchen, Granite Worksurfaces & Bosch Appliances
- Automated Secure Underground Parking Can Be Arranged With Monthly Rental
- High Specification Throughout
- Concierge Service
- Long 106 Year Lease Remaining

Entrance Hall

13'1" x 11'7" (4.00 x 3.54)

20'6" x 5'1" (6.27m x 1.57m)

Living/Dining Room

17'6" x 12'3" (5.35 x 3.74)

Kitchen

9'11" x 5'11" (3.03 x 1.81)

Terrace

Bathroom

6'7" x 5'7" (2.02 x 1.71)

Bedroom One

11'3" x 11'2" (3.44 x 3.42)

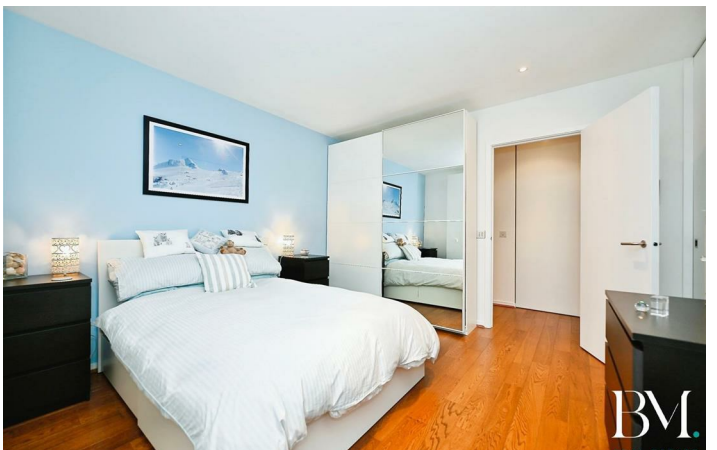
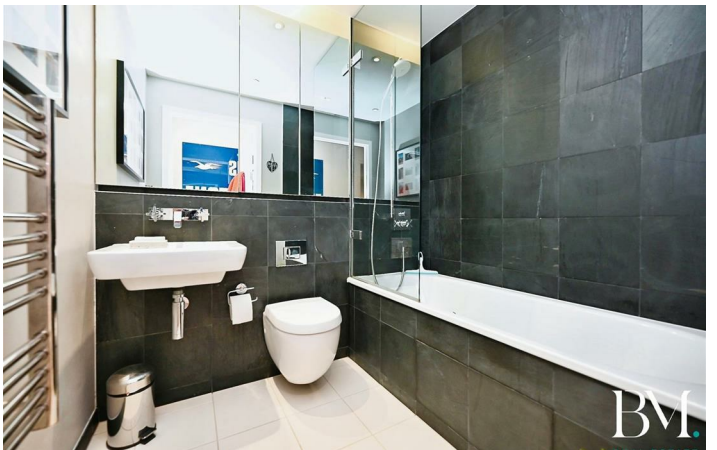
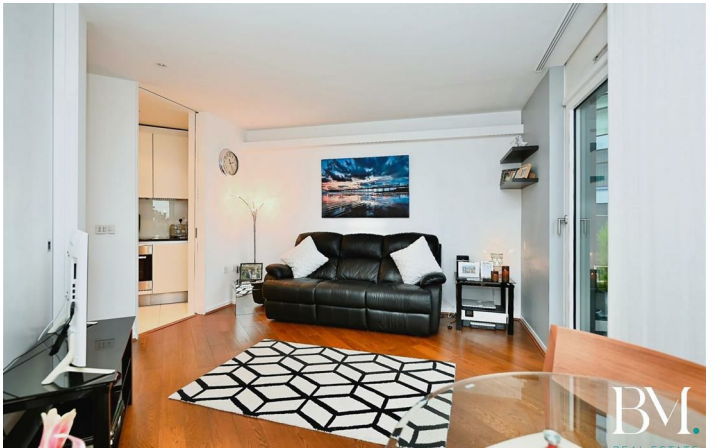
En-Suite

7'4" x 4'6" (2.24 x 1.39)

Bedroom Two

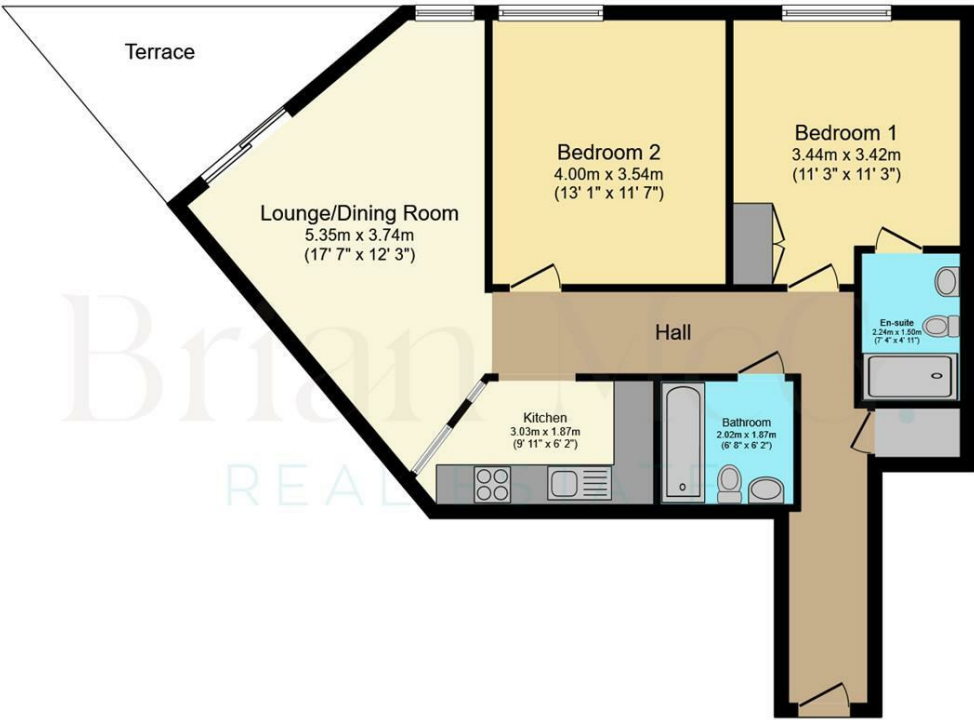


[Directions](#)





Floor Plan



Floor Plan
Floor area 75.0 m² (807 sq.ft.)

TOTAL: 75.0 m² (807 sq.ft.)

This floor plan is for illustrative purposes only. It is not drawn to scale. Any measurements, floor areas (including any total floor area), openings and orientations are approximate. No details are guaranteed, they cannot be relied upon for any purpose and do not form any part of any agreement. No liability is taken for any error, omission or misstatement. A party must rely upon its own inspection(s). Powered by www.Propertybox.io

These particulars, whilst believed to be accurate are set out as a general outline only for guidance and do not constitute any part of an offer or contract. Intending purchasers should not rely on them as statements of representation of fact, but must satisfy themselves by inspection or otherwise as to their accuracy. No person in this firms employment has the authority to make or give any representation or warranty in respect of the property.

