



## 35 Cowper Road Burbage, Hinckley, LE10 2LW

This deceptively spacious semi-detached home resides in the highly sought-after location of Burbage, and is offered for sale with NO ONWARD CHAIN.

This property is in good condition and features a variety of unique attributes that make it a lucrative opportunity for investors and an ideal home for families.

The house consists of three bedrooms - two doubles and a single - offering ample space for a growing family or for accommodating guests. It also boasts a reception room with large windows that let in an abundance of natural light, creating a warm and welcoming atmosphere for relaxing or entertaining.

The kitchen is a standout feature of this property. It's open-plan with built-in pantries, and also offers a dining space - perfect for family meals or entertaining guests. The natural light that fills the room adds an extra touch of warmth and homeliness to the space.

Guide price £280,000

# 35 Cowper Road

Burbage, Hinckley, LE10 2LW



- Semi Detached Family Home
- Three Bedrooms
- No Onward Chain
- Sought After Area of Burbage
- Seperate Lounge
- Open Plan Kitchen/Diner
- Refitted Family Bathroom
- Home Office/Workshop
- Enclosed Rear Garden
- Driveway & Single Garage

## Entrance Hall

9'1" x 8'11" (2.79 x 2.72)

## Lounge

12'3" x 10'9" (3.74 x 3.30)

## Kitchen/Diner

20'2" x 10'2" (6.16 x 3.10)

## Bedroom One

12'3" x 10'7" (3.75 x 3.25)

## Bedroom Two

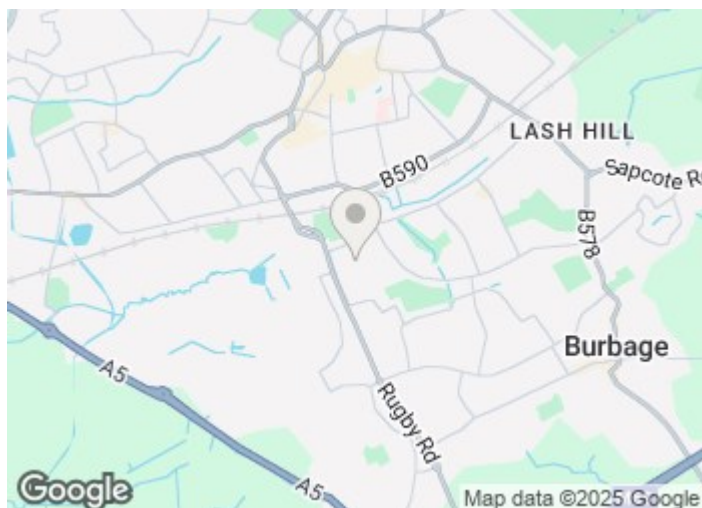
10'7" x 10'2" (3.25 x 3.10)

## Bedroom Three

9'3" x 8'11" (2.83 x 2.73)

## Bathroom

9'2" x 5'8" (2.80 x 1.73)

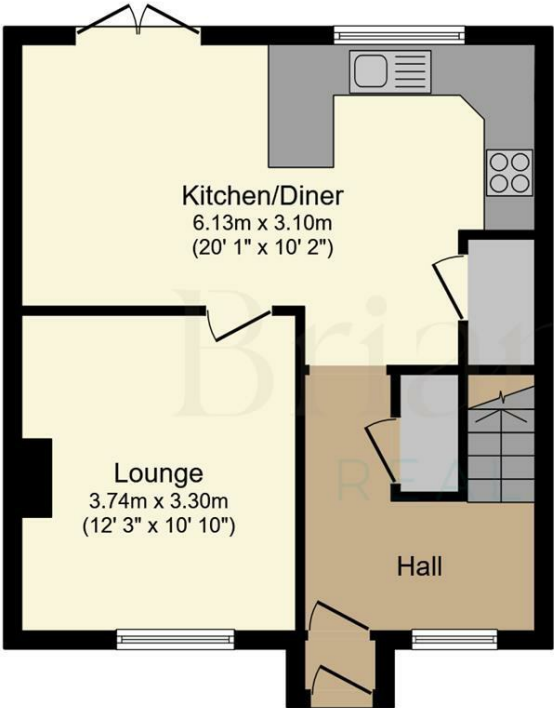


[Directions](#)

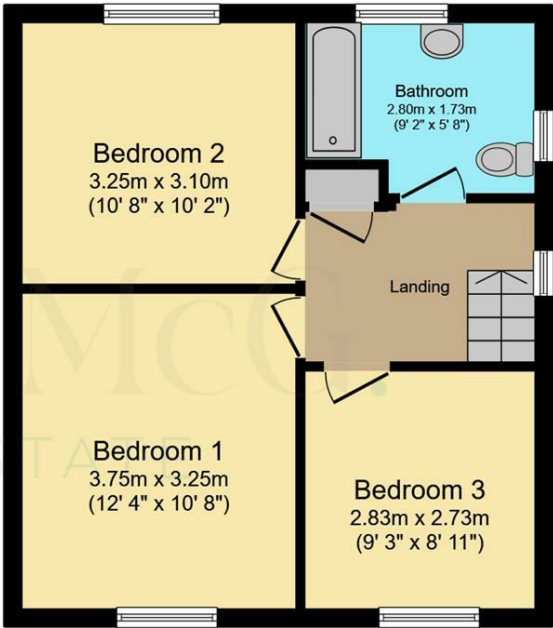




Floor Plan



Ground Floor  
Floor area 42.8 m² (461 sq.ft.)



First Floor  
Floor area 42.2 m² (454 sq.ft.)

TOTAL: 85.0 m² (914 sq.ft.)

This floor plan is for illustrative purposes only. It is not drawn to scale. Any measurements, floor areas (including any total floor area), openings and orientations are approximate. No details are guaranteed, they cannot be relied upon for any purpose and do not form any part of any agreement. No liability is taken for any error, omission or misstatement. A party must rely upon its own inspection(s). Powered by [www.Propertybox.io](http://www.Propertybox.io)

These particulars, whilst believed to be accurate are set out as a general outline only for guidance and do not constitute any part of an offer or contract. Intending purchasers should not rely on them as statements of representation of fact, but must satisfy themselves by inspection or otherwise as to their accuracy. No person in this firms employment has the authority to make or give any representation or warranty in respect of the property.

