

12 Richmond Road Hillmorton, Rugby, CV21 3AB

This EXCEPTIONAL property has been EXTENDED, and REFURBISHED to a very high standard of finish, including LANDSCAPING, AIR CONDITIONING, and offers OFF ROAD PARKING FOR UPTO 8 VEHICLES, including secure gated parking.

Situated in a very SOUGHT AFTER LOCATION, this stylish, modern, bay fronted home offers a truly turn key proposition for buyers, with NO ONWARD CHAIN.

Comprising entrance porch and hallway, GORGEOUS OPEN PLAN LOUNGE/DINER/REFITTED KITCHEN, ground floor shower room, THREE DOUBLE BEDROOMS, and a REFITTED FOUR PIECE FAMILY BATHROOM, and a study/walk in wardrobe.

The property further benefits from double glazing, external rendering, recent gas boiler, air conditioning to both floors, a low maintenance landscaped rear garden with artificial lawn

Guide price £350,000

12 Richmond Road

Hillmorton, Rugby, CV21 3AB



- EXTENDED Semi Detached
- Rendered & Landscaped
- Refitted Four Piece Family Bathroom
- NO ONWARD CHAIN
- Three Double Bedrooms
- Gorgeous Open Plan Lounge/Diner/Refitted Kitchen
- AIR CONDITIONING
- Off Road Parking For Upto 8 Vehicles
- Refitted Shower Room
- Landscaped Rear Garden

Entrance Porch

Entrance Hall

Lounge/Diner/Kitchen

22'7" x 15'5" (6.90 x 4.70)

Shower Room

5'8" x 4'7" (1.73 x 1.41)

Bedroom Three

10'10" x 10'10" (3.31 x 3.31)

Bedroom One

11'3" x 10'10" (3.44 x 3.32)

Bedroom Two

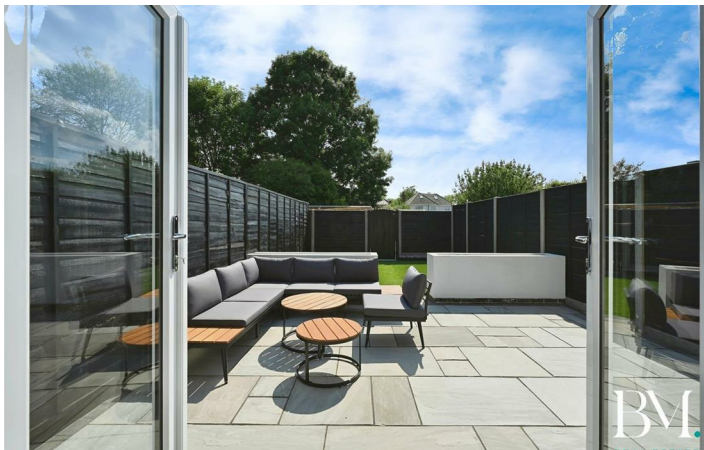
11'10" x 10'4" (3.62 x 3.17)

Family Bathroom

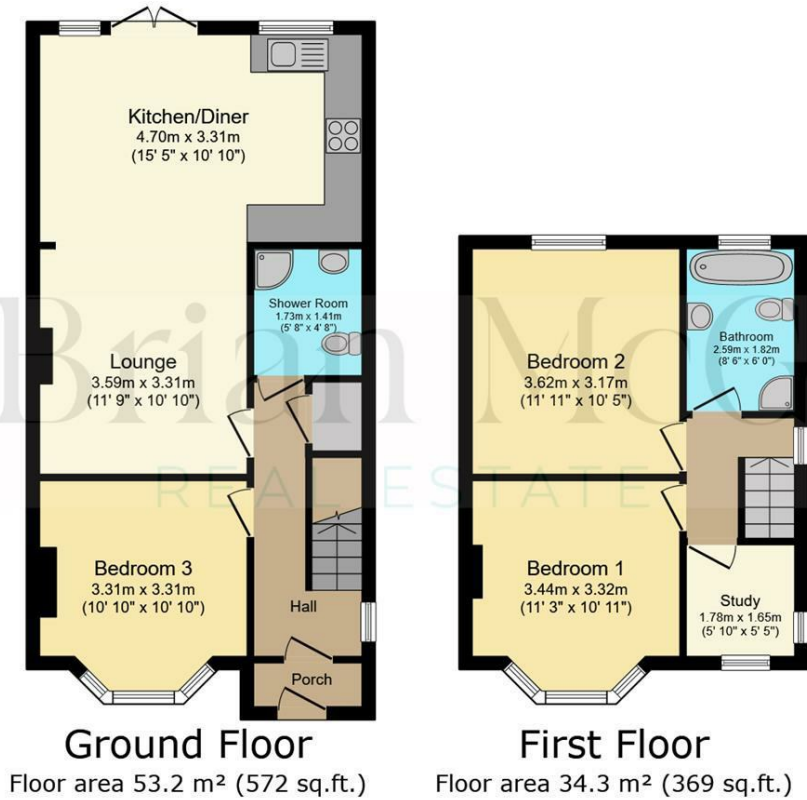
8'5" x 5'11" (2.59 x 1.82)



[Directions](#)



Floor Plan



TOTAL: 87.4 m² (941 sq.ft.)

This floor plan is for illustrative purposes only. It is not drawn to scale. Any measurements, floor areas (including any total floor area), openings and orientations are approximate. No details are guaranteed, they cannot be relied upon for any purpose and do not form any part of any agreement. No liability is taken for any error, omission or misstatement. A party must rely upon its own inspection(s). Powered by www.Propertybox.io

These particulars, whilst believed to be accurate are set out as a general outline only for guidance and do not constitute any part of an offer or contract. Intending purchasers should not rely on them as statements of representation of fact, but must satisfy themselves by inspection or otherwise as to their accuracy. No person in this firm's employment has the authority to make or give any representation or warranty in respect of the property.

