



28 Falstaff Drive , Rugby, CV22 6LL

This GORGEOUS semi-detached bungalow, boasts THREE DOUBLE BEDROOMS, and a STUNNING FULL HEIGHT GLAZED BAY WINDOW FEATURE.

Located in the highly sought after Woodlands area of Rugby, this spacious bungalow is beautifully and tastefully styled and presented throughout.

There are gardens to both the front and rear aspects, providing plenty of outdoor entertaining space for the summer months, whilst the tandem driveway and detached single garage provides off road parking for multiple vehicles to the side aspect.

Entering through the entrance porch, you are greeted by an open plan lounge, which benefits from a very unique feature - a full height glazed triple sided bay window which floods the room with natural light, yet still enjoys privacy from the well manicured front garden.

Guide price £295,000

28 Falstaff Drive , Rugby, CV22 6LL



- Semi Detached Bungalow
- Entrance Porch
- Full Height Glazed Feature Bay Window
- Beautifully Presented Throughout
- Three Double Bedrooms
- Stylish Fitted Kitchen
- Enclosed Rear Garden
- Multi Car Driveway & Detached Single Garage
- Open Plan Lounge/Diner
- Very Sought After Location

Entrance Porch

5'3" x 4'11" (1.62 x 1.52)

Lounge/Diner

21'5" x 11'0" (6.54 x 3.37)

Kitchen

9'10" x 8'7" (3.00 x 2.63)

Shower Room

9'10" x 7'0" (3.01 x 2.14)

Bedroom One

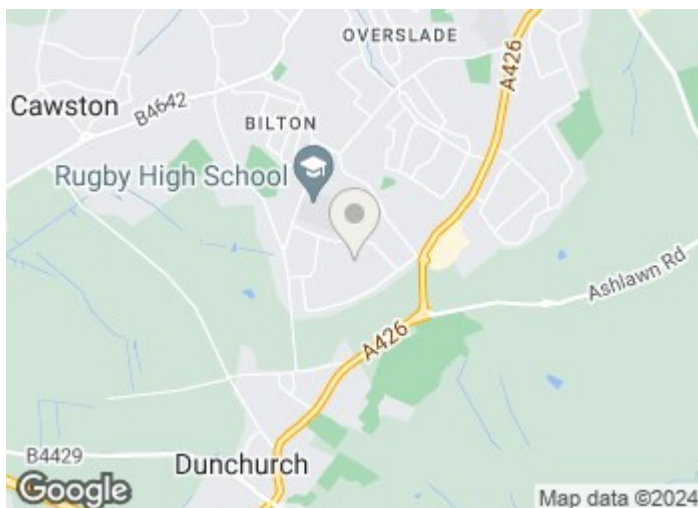
11'10" x 11'1" (3.61 x 3.39)

Bedroom Two

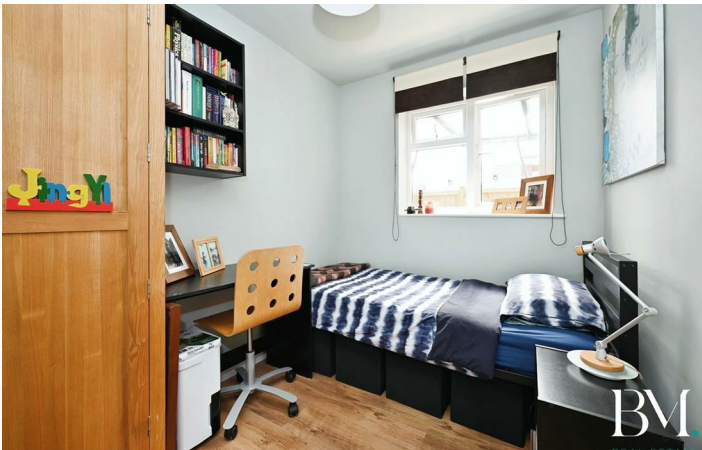
9'10" x 8'10" (3.01 x 2.70)

Bedroom Three

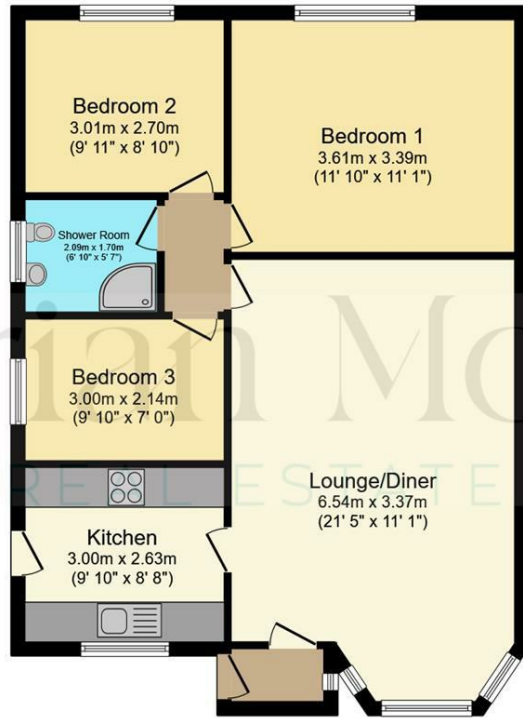
9'10" x 7'0" (3.01 x 2.14)



[Directions](#)



Floor Plan



Brian McG. ESTATE

Floor Plan

Floor area 72.5 m² (780 sq.ft.)

TOTAL: 72.5 m² (780 sq.ft.)

This floor plan is for illustrative purposes only. It is not drawn to scale. Any measurements, floor areas (including any total floor area), openings and orientations are approximate. No details are guaranteed, they cannot be relied upon for any purpose and do not form any part of any agreement. No liability is taken for any error, omission or misstatement. A party must rely upon its own inspection(s). Powered by www.Propertybox.io

These particulars, whilst believed to be accurate are set out as a general outline only for guidance and do not constitute any part of an offer or contract. Intending purchasers should not rely on them as statements of representation of fact, but must satisfy themselves by inspection or otherwise as to their accuracy. No person in this firm's employment has the authority to make or give any representation or warranty in respect of the property.

