



Lutterworth Grange Leicester Road , Lutterworth, LE17 4LX

The STUNNING & INCREDIBLE 'Lutterworth Grange' comprises of a LUXURY BARN CONVERSION with four/five double bedrooms, spanning nearly 3000 sq.ft, along with THREE STORAGE BARNs totalling collectively over 7000 sq.ft, its very own PRIVATE LAKE, and extensive gardens with FIELD VIEWS situated on approx 2.4 acres.

(Note: There have been MAJOR CHANGES introduced in May 2024 to Q PLANNING allowing the conversion of agricultural buildings to dwellings.)

Offered for sale with NO ONWARD CHAIN, this exceptional property has been modernised and improved by the current owners with no expense spared. Entry is via secure electric gates with intercom & CCTV system.

The centre piece is the jaw dropping 70ft plus OPEN PLAN living accommodation, including a triple aspect living room with vaulted ceiling, a large dining area flooded with natural light

Offers over £1,500,000

Lutterworth Grange Leicester Road , Lutterworth, LE17 4LX



- Luxury Barn Conversion
- Three Storage Barns Totalling over 7000sq.ft
- Electric Gated Entry
- NO ONWARD CHAIN
- Four/Five Double Bedrooms
- Set On Approx 2.5 Acres
- Extensive Gardens & Outdoor Entertaining Areas
- Stunning 70ft plus Open Plan Living Accommodation
- Fishing Lake
- Three Bathrooms

Living Room

26'4" x 13'5" (8.04 x 4.10)

Dining Room

17'3" x 14'0" (5.27 x 4.27)

Kitchen/Breakfast Room

30'2" x 14'7" (9.22 x 4.47)

Snug

15'11" x 12'7" (4.86 x 3.84)

Utility Room

10'1" x 6'2" (3.09 x 1.89)

Primary Bedroom

19'9" x 14'6" (6.03 x 4.44)

En-Suite

7'1" x 7'0" (2.16 x 2.15)

Dressing Room

Guest Bedroom

16'7" x 13'5" (5.07 x 4.09)

En-Suite

10'2" x 4'4" (3.12 x 1.34)

Bedroom Two

13'7" x 13'1" (4.16 x 3.99)

Bedroom Three

12'11" x 9'6" (3.95 x 2.90)

Family Bathroom

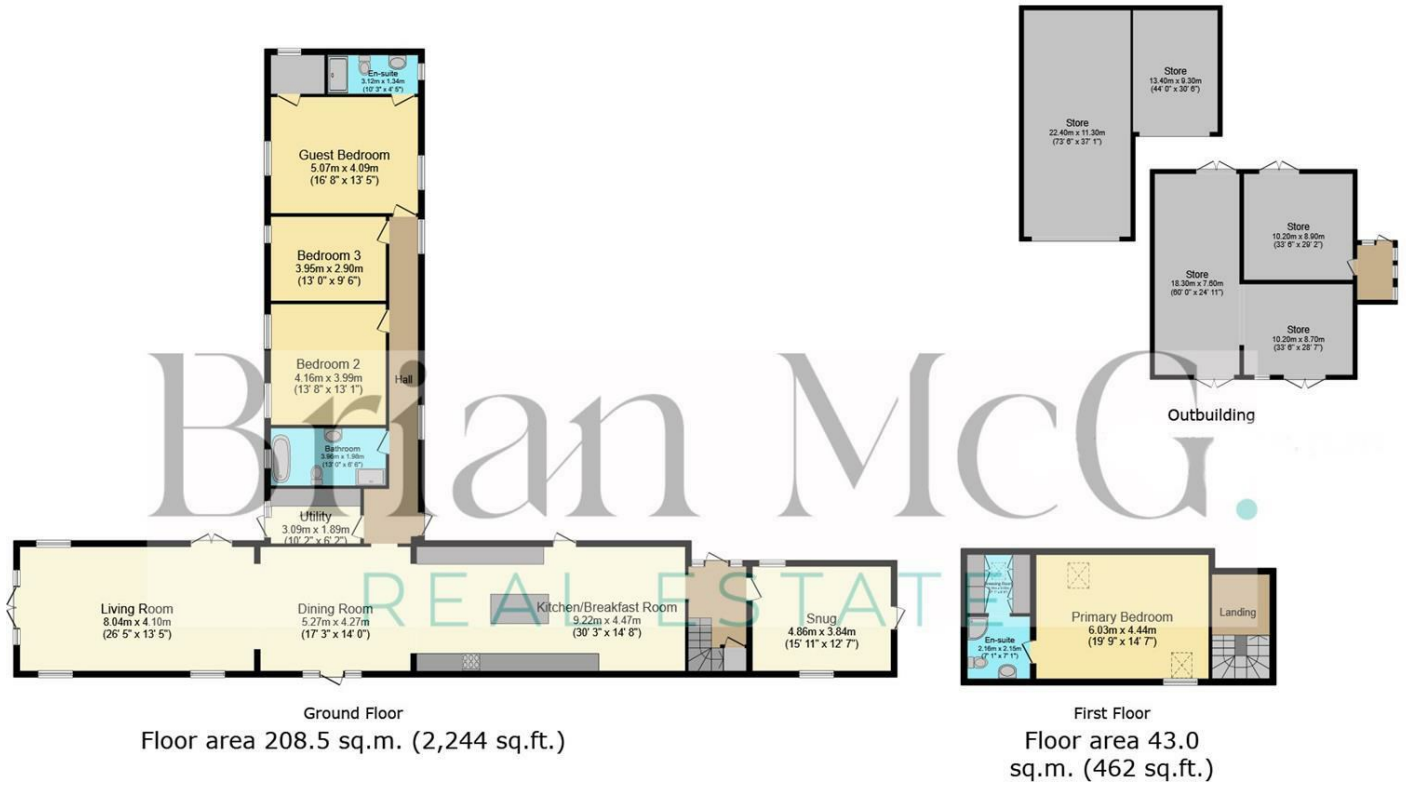
12'11" x 6'5" (3.96 x 1.98)



[Directions](#)



Floor Plan



This floor plan is for illustrative purposes only. It is not drawn to scale. Any measurements, floor areas (including any total floor area), openings and orientations are approximate. No details are guaranteed, they cannot be relied upon for any purpose and do not form any part of any agreement. No liability is taken for any error, omission or misstatement. A party must rely upon its own inspection(s). Powered by www.Propertybox.io

These particulars, whilst believed to be accurate are set out as a general outline only for guidance and do not constitute any part of an offer or contract. Intending purchasers should not rely on them as statements of representation of fact, but must satisfy themselves by inspection or otherwise as to their accuracy. No person in this firm's employment has the authority to make or give any representation or warranty in respect of the property.

