

2 Weeford Park Cottages London Road Canwell, Sutton Coldfield, B75 5ST

This EXCEPTIONAL residence has it all! 'Landscaped Gardens' does not do it justice, this is like Birmingham's answer to the BOTANICAL GARDENS!

This STUNNING, and VASTLY EXTENDED semi detached property boasts five/six bedrooms, a 20ft ORANGERY, four reception rooms, a ONE BEDROOM LUXURY ANNEXE, a ONE BEDROOM TROPICAL CABIN, and an OUTSTANDING OUTDOOR ENTERTAINMENT AREA with roof lantern, bar, built in kitchen, WC, and a seating capacity of approx 50 people.

Situated in a beautiful semi rural location on the edge of the Canwell Estate, on the doorstep of Sutton Coldfield, Mere Green and Tamworth, with gated access off the London Road, onto a large block paved driveway with off road parking for multiple vehicles, and a double garage with lapsed planning permission to convert into additional accommodation.

The gardens are absolutely INCREDIBLE and must be seen to be fully appreciated, so well stocked, manicured, and tended to, they are truly show stopping.

Offers over £700,000

2 Weeford Park Cottages London Road Canwell, Sutton Coldfield, B75 5ST



- VASTLY EXTENDED Semi Detached
- Large Driveway & Double Garage
- One Bedroom Luxury Annexe
- Luxury High Spec Bathrooms
- 5/6 Bedrooms
- Four Reception Rooms
- One Bedroom Tropical Cabin
- STUNNING LANDSCAPED GARDENS
- NO ONWARD CHAIN
- 50 Seat OUTDOOR BAR/KITCHEN/Entertaining Area

Lounge

13'6" x 11'8" (4.14 x 3.58)

Home Office

12'0" x 11'10" (3.66 x 3.61)

Snug

17'10" x 11'10" (5.46 x 3.63)

Kitchen/Diner

23'7" x 18'4" (7.19 x 5.59)

Utility Room

Orangery/Formal Dining Room

20'2" x 7'0" (6.17 x 2.15)

Luxury Shower Room

Bedroom One

20'8" x 9'8" (6.32 x 2.97)

Bedroom Two

12'11" x 10'11" (3.94 x 3.33)

Bedroom Three

12'0" x 9'8" (3.66 x 2.97)

Bedroom Four

9'8" x 8'7" (2.95 x 2.64)

Bedroom Five

8'2" x 6'2" (2.49 x 1.88)

Bedroom Six

8'2" x 6'2" (2.49 x 1.88)

Luxury Family Bathroom

Annexe Lounge/Kitchen

15'1" x 13'10" (4.62 x 4.22)

Annexe Bedroom

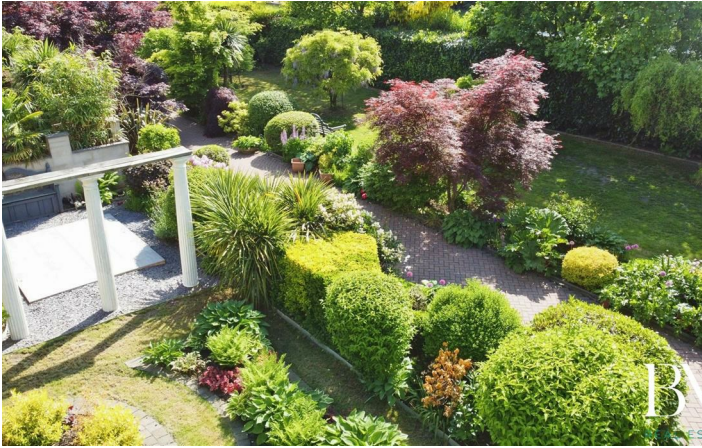
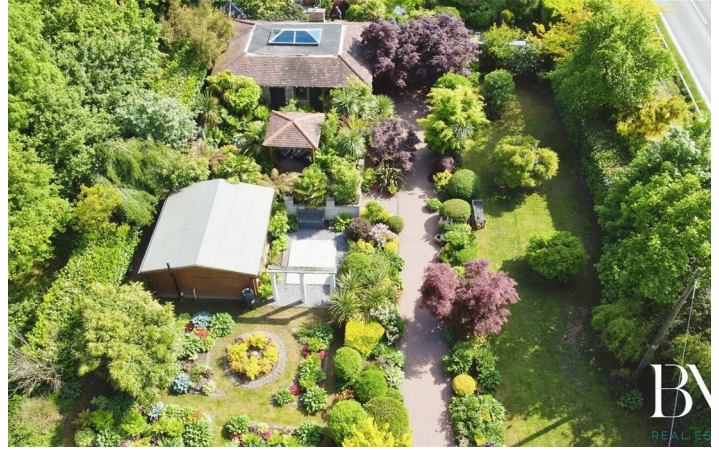
Annexe Luxury Shower Room

Outdoor Bar/Restaurant

31'0" x 24'4" (9.47 x 7.42)



[Directions](#)



Floor Plan



Ground Floor
Floor area 95.0 m² (1,022 sq.ft.)

First Floor
Floor area 47.4 m² (511 sq.ft.)

Outbuilding
Floor area 54.1 m² (582 sq.ft.)

TOTAL: 196.5 m² (2,115 sq.ft.)

This floor plan is for illustrative purposes only. It is not drawn to scale. Any measurements, floor areas (including any total floor area), openings and orientations are approximate. No details are guaranteed, they cannot be relied upon for any purpose and do not form any part of any agreement. No liability is taken for any error, omission or misstatement. A party must rely upon its own inspection(s). Powered by www.Propertybox.io

These particulars, whilst believed to be accurate are set out as a general outline only for guidance and do not constitute any part of an offer or contract. Intending purchasers should not rely on them as statements of representation of fact, but must satisfy themselves by inspection or otherwise as to their accuracy. No person in this firm's employment has the authority to make or give any representation or warranty in respect of the property.

