

23A Lutterworth Road Pailton, Rugby, CV23 0QE

**** LAST PLOT REMAINING ****

STUNNING NEW BUILD DETACHED property, benefitting from a 10 year NHBC warranty. This attractive family home boasts FOUR DOUBLE BEDROOMS and enjoys a peaceful rural setting on the edge of the village of Pailton, with far reaching FIELD VIEWS to the rear aspect.

Pailton village has been granted over £2MILLION OF NATIONAL LOTTERY HERITAGE FUNDING to create a new hub, which includes a PUB, RESTAURANT, CAFE, SHOP, POST OFFICE, ENTERPRISE UNITS & CO-WORKING SPACE.

This neutrally decorated home boasts a gorgeous open-plan kitchen with high-quality fixtures, including Quartz Worktops & Samsung integrated appliances. The kitchen also features

Guide price £425,000

23A Lutterworth Road

Pailton, Rugby, CV23 0QE



- New Build Detached Home (10 Year NHBC Warranty)
- Versatile Accommodation Over Three Floors
- Utility Room and Guest WC
- Eligible for Discounted 'Green' Mortgages
- Peaceful Village Location With Field Views
- Garage & Multiple Off Road Parking (Front & Rear Aspects)
- Family Bathroom & Two En-Suites (Aqualisa Bathroom Fittings)
- Four Spacious Double Bedrooms
- Stunning Open Plan Kitchen/Diner & Samsung Integrated Appliances
- Separate Lounge For Cosy Family Times

Entrance Hall

14'6" x 6'7" (4.43 x 2.03)

En-Suite

2.50 x 1.66

Lounge

12'10" x 12'0" (3.92 x 3.66)

Bedroom Three

3.72 x 2.75

Kitchen/Diner

19'0" x 13'1" (5.81 x 4.01)

Bedroom Four

3.42 x 2.97

Utility Room

10'8" x 5'1" (3.27 x 1.57)

Bathroom

1.97 x 1.85

Bedroom One

6.00 x 3.91

En-Suite

1.93 x 1.81

Bedroom Two

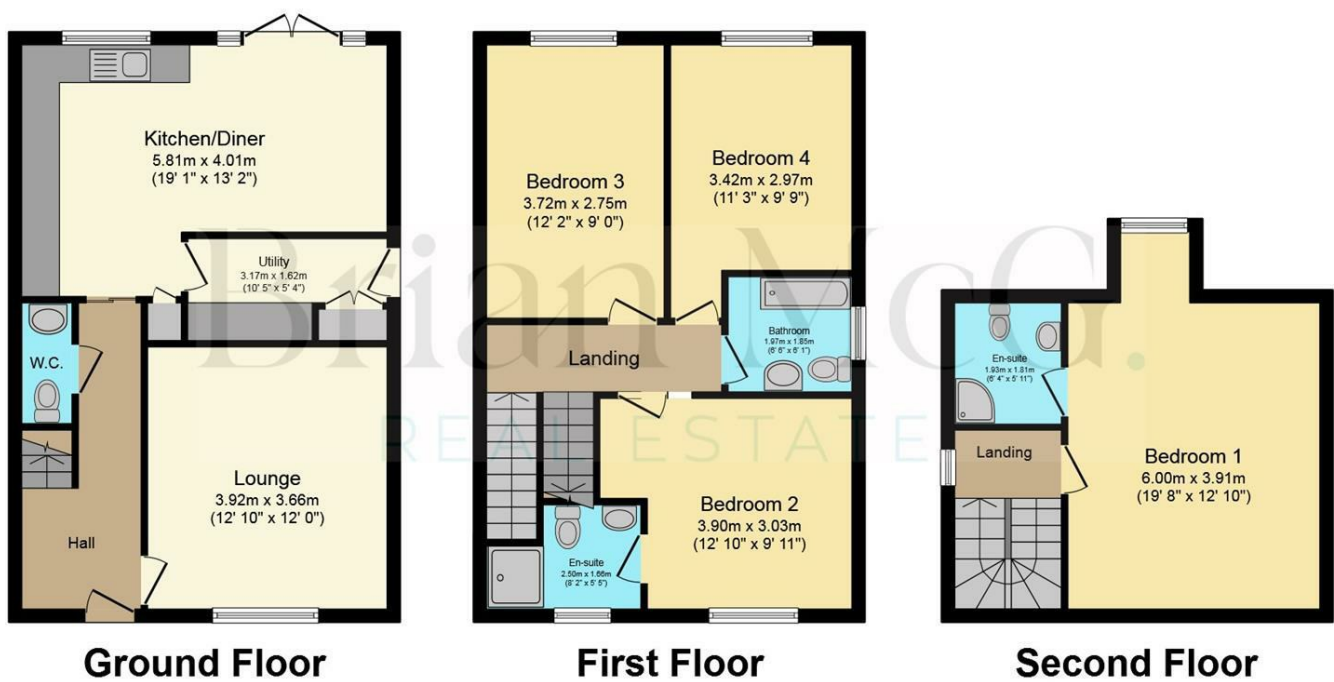
3.90 x 3.03



[Directions](#)



Floor Plan



Total floor area 133.8 sq.m. (1,440 sq.ft.) approx
This plan is for illustration purposes only and may not be representative of the property. Plan not to scale. Powered by PropertyBox

These particulars, whilst believed to be accurate are set out as a general outline only for guidance and do not constitute any part of an offer or contract. Intending purchasers should not rely on them as statements of representation of fact, but must satisfy themselves by inspection or otherwise as to their accuracy. No person in this firm's employment has the authority to make or give any representation or warranty in respect of the property.

