

## 4 Sandpiper Close Brownhills, Walsall, WS8 6GB

This EXCEPTIONAL Detached residence was the former SHOWHOME, and is finished to an incredibly high standard, offering interior design standard presentation throughout.

The spacious and stylish living accommodation is arranged over two floors, and comprises of a generous entrance hallway with guest WC, a luxurious modern living room, with large windows flooding the room with natural light, and glass double doors leading to a formal dining room with feature mirrored wall, and a fitted kitchen/breakfast room with integrated appliances on the ground floor.

The first floor features a spacious landing area, four well proportioned bedrooms, two of which benefit from en-suite facilities, and a family bathroom.

The home is beautifully decorated and presented, and offers truly ready to move into accommodation.

Guide price £400,000

# 4 Sandpiper Close

Brownhills, Walsall, WS8 6GB



- Former Showhome Detached Property
- EXCEPTIONAL STANDARD OF FINISH
- Spacious Lounge
- Enclosed Rear Garden
- Four Generous Bedrooms
- Driveway & Garage
- Dining Room With Feature Mirrored Wall
- Three Stylish Bathrooms
- Entrance Hall & Guest WC
- Kitchen/Breakfast Room

## Entrance Hall

## Guest WC

## Lounge

18'2" x 10'11" (5.56 x 3.34)

## Dining Room

9'10" x 9'6" (3.00 x 2.92)

## Kitchen/Breakfast Room

16'9" x 9'9" (5.12 x 2.98)

## Bedroom One

15'1" x 10'11" (4.62 x 3.34)

## En-Suite

6'11" x 5'10" (2.13 x 1.80)

## Bedroom Two

12'0" x 9'1" (3.67 x 2.79)

## En-Suite

## Bedroom Three

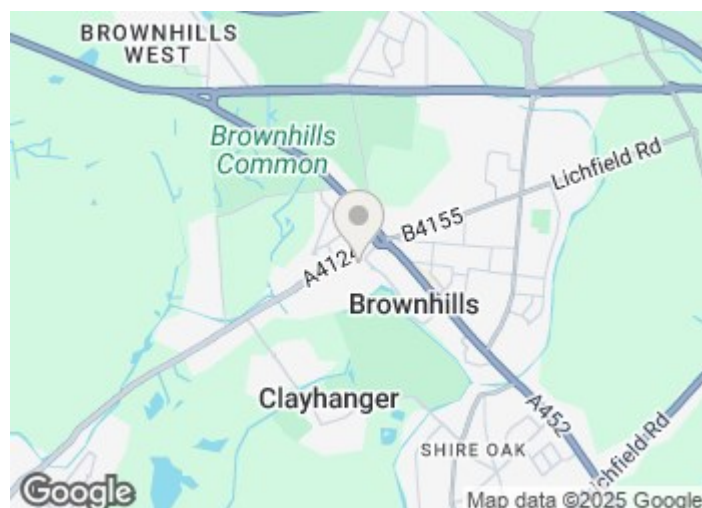
11'5" x 9'5" (3.50 x 2.89)

## Bedroom Four

10'5" x 8'11" (3.18 x 2.72)

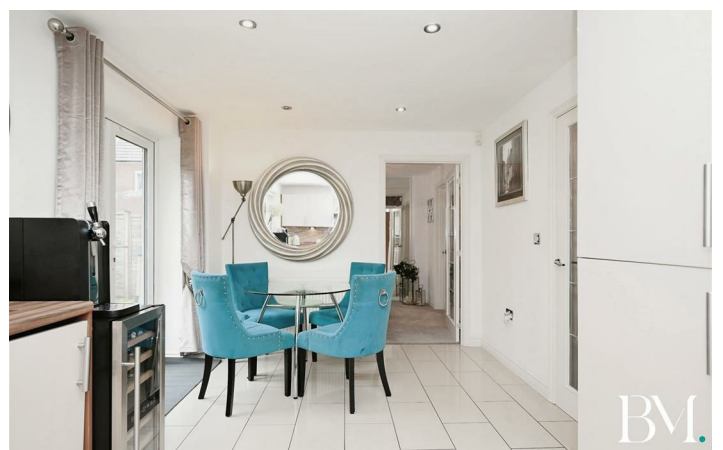
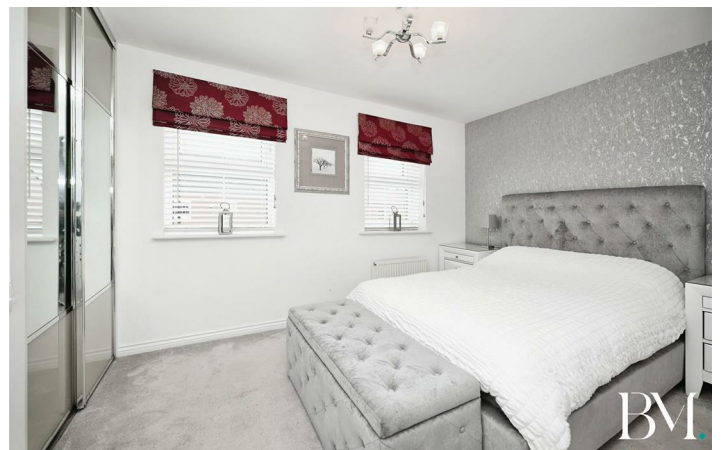
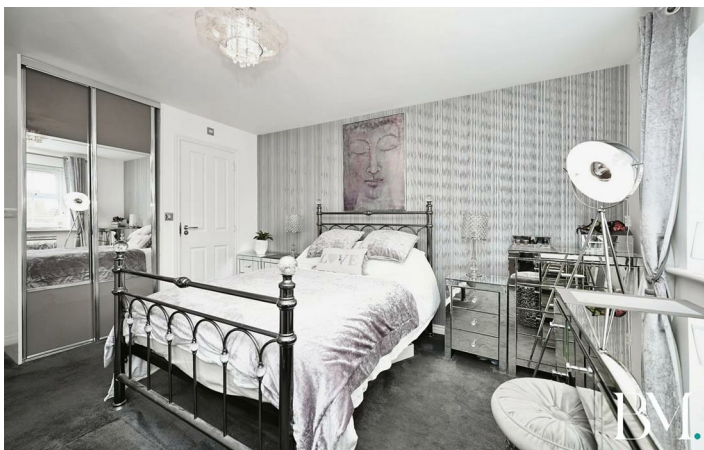
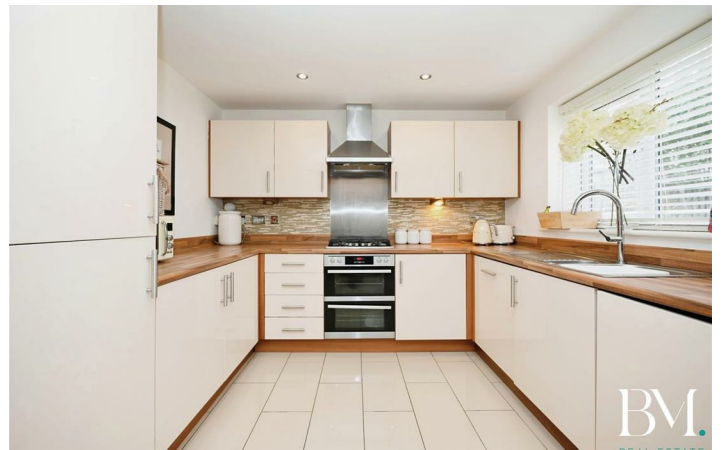
## Family Bathroom

7'6" x 5'7" (2.31 x 1.71)



[Directions](#)

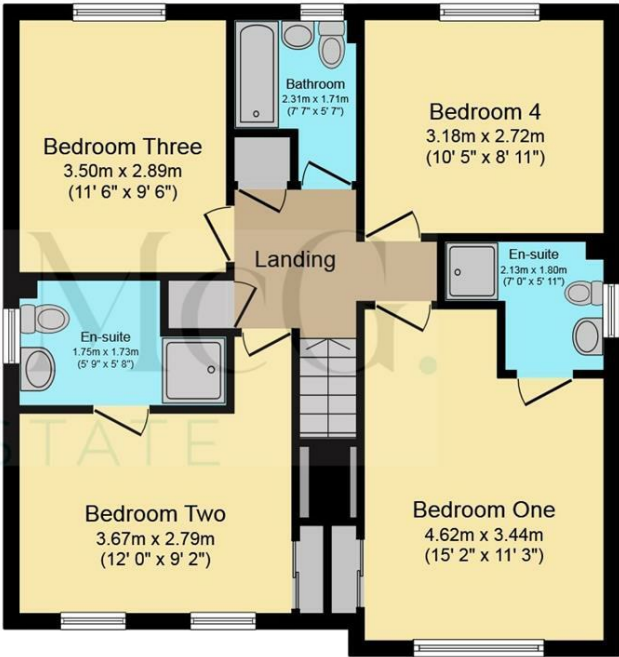




Floor Plan



Ground Floor



First Floor

Total floor area 119.8 sq.m. (1,290 sq.ft.) approx

This plan is for illustration purposes only and may not be representative of the property. Plan not to scale. Powered by PropertyBox

These particulars, whilst believed to be accurate are set out as a general outline only for guidance and do not constitute any part of an offer or contract. Intending purchasers should not rely on them as statements of representation of fact, but must satisfy themselves by inspection or otherwise as to their accuracy. No person in this firms employment has the authority to make or give any representation or warranty in respect of the property.

