



114 Welshmans Hill Sutton Coldfield, Birmingham, B73 6RS

Introducing this ATTRACTIVE SEMI DETACHED property, situated in an urban area and offering excellent public transport links, well regarded nearby schools, and local amenities including the Princess Alice retail park, and Boldmere and Sutton Coldfield town centres.

Boasting good condition throughout, there is generously proportioned accommodation arranged over three floors, perfect for growing families, with desirable features including THREE BATHROOMS, off road parking to the front aspect, and a split level garden with lawned and patio/entertaining areas to the rear.

The property comprises of a spacious entrance hall and guest wc, a modern kitchen/diner with integral appliances, providing a comfortable dining space for entertaining family and guests, and a separate welcoming reception room with large windows providing ample natural light and access to the garden on the ground floor.

Guide price £275,000

114 Welshmans Hill

Sutton Coldfield, Birmingham, B73 6RS



- Semi-detached
- Entrance hall & guest WC
- Spacious bedrooms with natural light
- Close to shops, local amenities and schooling
- Three-storey
- Open-plan kitchen/diner with modern appliances
- Driveway for off road parking
- Three bathrooms
- Separate reception room with garden access
- Split Level Rear Garden

Entrance Hall

Guest WC

Lounge

13'10" x 13'10" (4.24 x 4.22)

Kitchen/Diner

13'6" x 9'10" (4.14 x 3.00)

Family Bathroom

Bedroom One

19'1" x 13'10" (5.84 x 4.24)

En-Suite

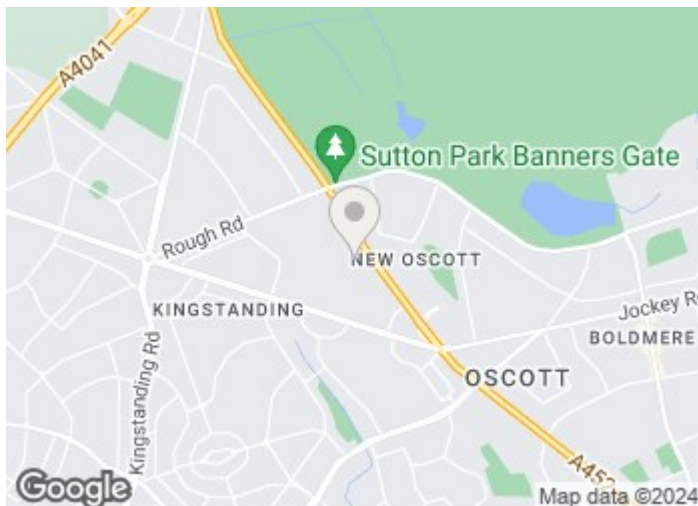
Bedroom Two

13'6" x 10'11" (4.14 x 3.33)

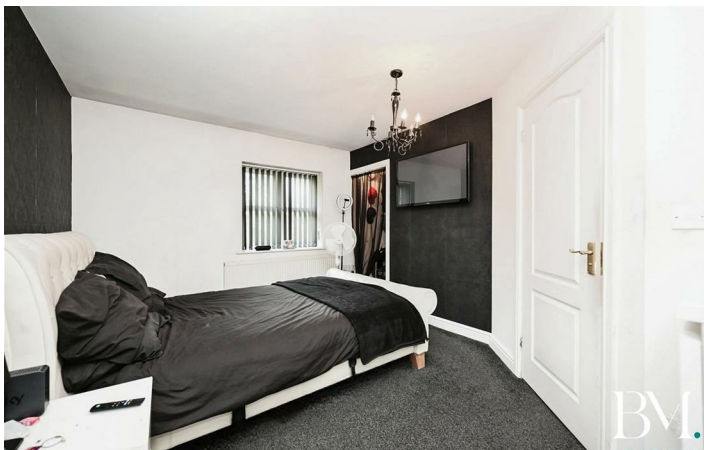
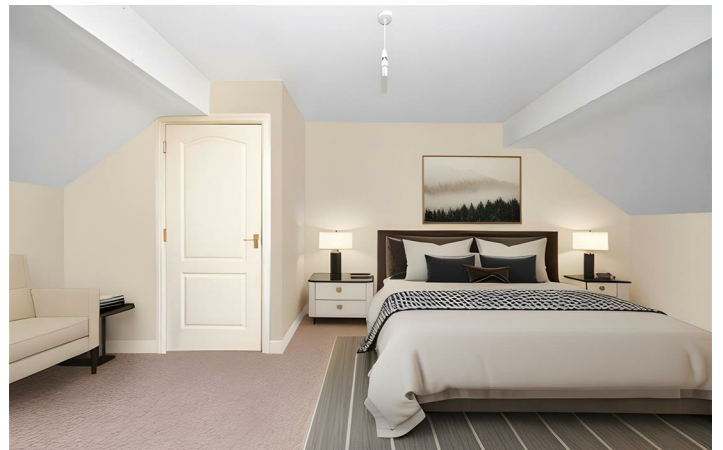
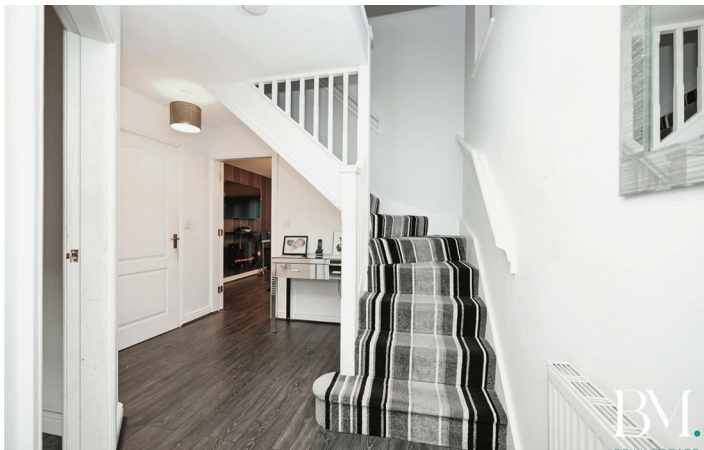
En-Suite

Bedroom Three

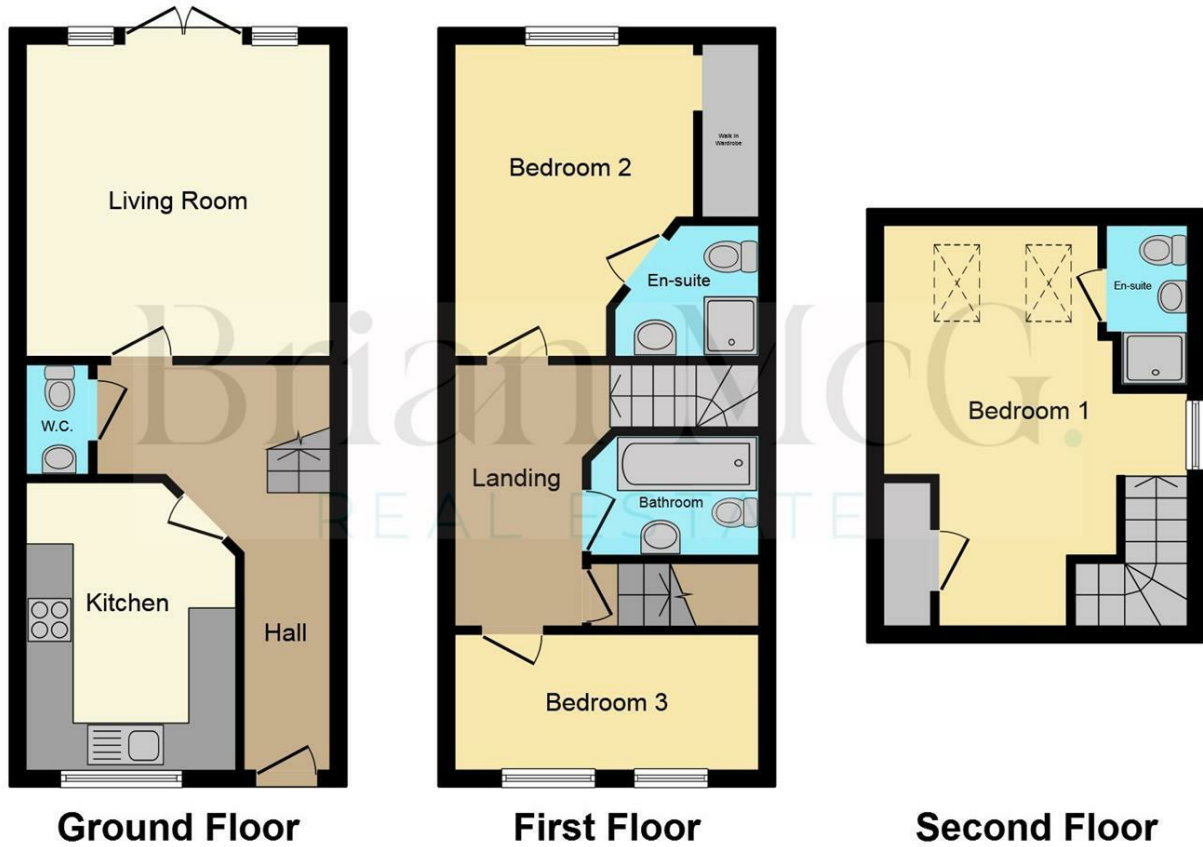
13'10" x 7'10" (4.22 x 2.41)



[Directions](#)



Floor Plan



This plan is for illustration purposes only and may not be representative of the property. Plan not to scale. Powered by PropertyBox

These particulars, whilst believed to be accurate are set out as a general outline only for guidance and do not constitute any part of an offer or contract. Intending purchasers should not rely on them as statements of representation of fact, but must satisfy themselves by inspection or otherwise as to their accuracy. No person in this firm's employment has the authority to make or give any representation or warranty in respect of the property.

