



35A Baker Street , Lutterworth, LE17 4BG

This immaculate, architect designed bungalow offers a stylish and modern living experience with its open-plan design, high-quality finish, and spacious bedrooms, all set in a serene location.

Built in 2015, this detached property boasts an architect-designed layout with high levels of privacy. With its unparalleled attention to detail and high-quality finish, this bungalow offers a truly exceptional living experience.

Upon entering, you are greeted by the stunning spacious reception room, featuring high ceilings, large windows, and a beautiful feature fireplace. The open-plan design seamlessly connects the reception room to the garden via the bi-folding doors, providing a seamless flow between indoor and outdoor spaces.

Guide price £300,000

35A Baker Street , Lutterworth, LE17 4BG



- Immaculate Condition
- Vaulted Ceilings
- High-quality finish
- Detached Bungalow
- Limestone Flooring
- Open-plan living
- Architect Designed & Built in 2015
- Underfloor heating
- Spacious master bedroom with en-suite

Entrance Hallway

10'2" x 3'1" (3.11 x 0.95)

Lounge/Diner/Kitchen

28'2" x 12'9" (8.59 x 3.89)

Bedroom One

12'5" x 11'6" (3.81 x 3.51)

En-Suite

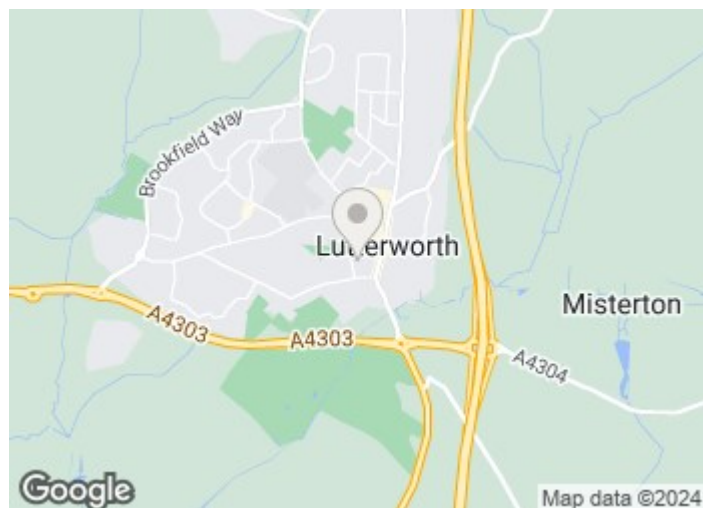
8'0" x 2'9" (2.46 x 0.85)

Bedroom Two

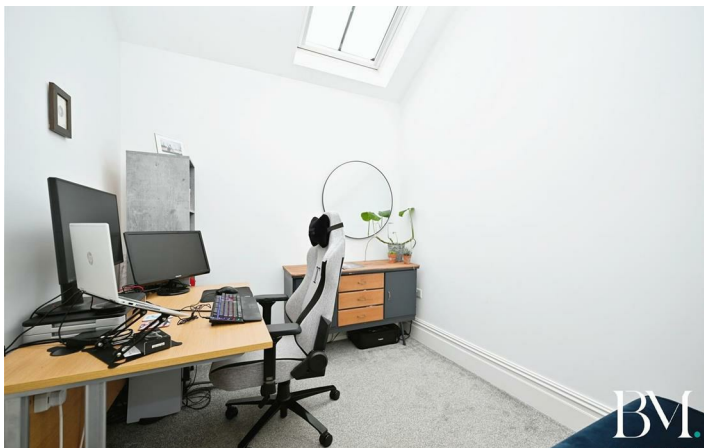
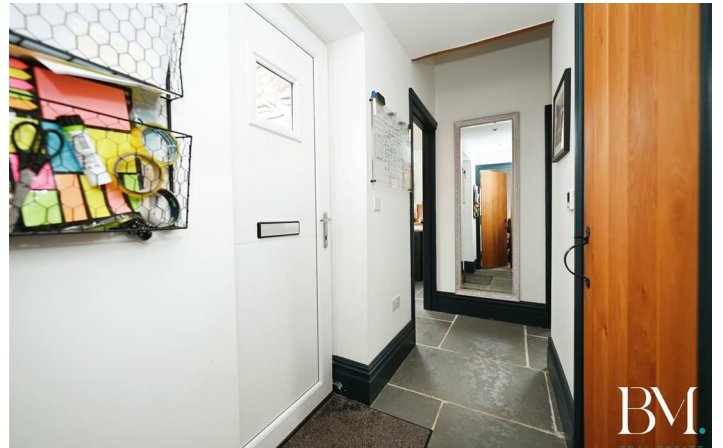
9'6" x 8'2" (2.92 x 2.49)

Bathroom

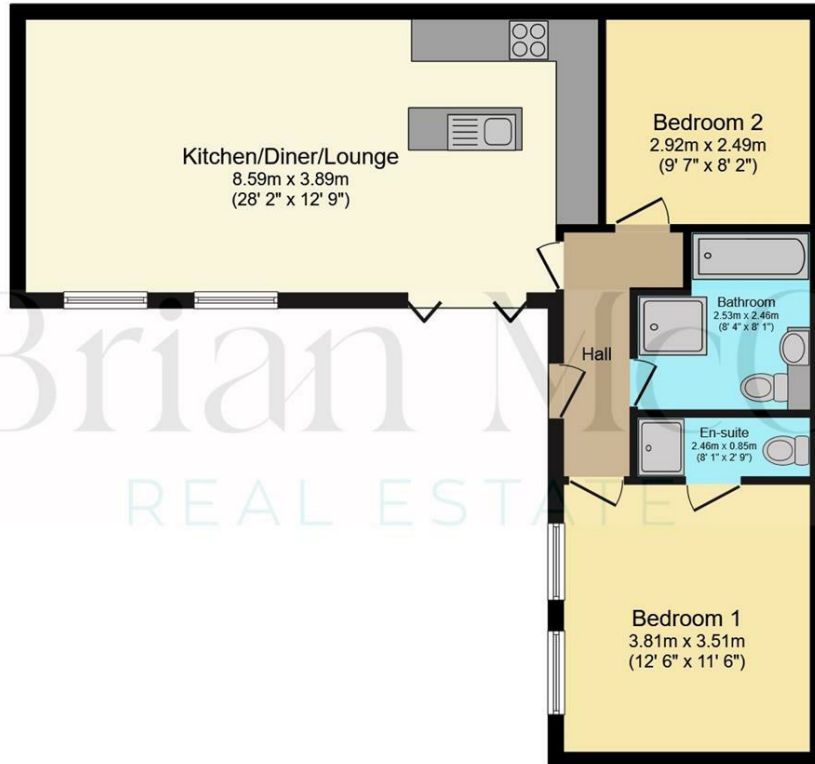
8'3" x 7'11" (2.53 x 2.43)



[Directions](#)



Floor Plan



Floor Plan

Total floor area 66.3 m² (713 sq.ft.) approx

This plan is for illustration purposes only and may not be representative of the property. Plan not to scale. Powered by PropertyBox

These particulars, whilst believed to be accurate are set out as a general outline only for guidance and do not constitute any part of an offer or contract. Intending purchasers should not rely on them as statements of representation of fact, but must satisfy themselves by inspection or otherwise as to their accuracy. No person in this firm's employment has the authority to make or give any representation or warranty in respect of the property.

