

LA PINEDA

24



PGA CATALUNYA
GOLF AND WELLNESS

Set in a 500 hectare Catalan countryside, the unique properties at PGA Catalunya are designed to let the beauty of their woodland surroundings to pour inside.

Blending nature into the architecture of our sustainable properties, the design focuses on mental and physical wellbeing throughout. Not only will residents benefit from award-winning design and architecture, they will also step outside into our uninhibited Catalan landscape and enjoy its endless mountain views.

Residents will certainly appreciate the abundance of experiences crafted to rejuvenate the mind and the body: from a round on PGA Catalunya's European Tour golf courses, the Stadium and the Tour Course, to walking through our kitchen garden to pick your own organic produce for the table.

Being among the Catalan pine trees is a truly holistic way to experience life. No aspect of our exceptional properties is left unturned, with carefully considered nutrition, comfort and exercise set to enhance everyday living.

Our IAGTO sustainability award-winning resort offers a glimpse of the future of environmentally conscious living cultivating PGA Catalunya's philosophy to celebrate the finer things in life: eating well, being well and living well.

pgacatalunya.com



PGA CATALUNYA
GOLF AND WELLNESS

24 LA PINEDA

Surrounded by breathtaking nature With stunning views from every room

Light effortlessly flows through this property, which has been designed to bring the outdoors in. And, what a stunning outdoors it is. With nature surrounding you from every angle, La Pineda 24 is a quiet nook of tranquility.

Designed by the Camps Felip Arquitecturia Studio, the house has been created over two levels. The ground floor is home to most of the rooms including the spacious and airy kitchen, dining room, living room and two double bedrooms. With a large focal window at the rear of the property, you will be able to enjoy your garden space and private swimming pool.

The first floor boasts a generous master bedroom with en-suite bathroom and dressing room. Whether you're enjoying the views from here in the height of summer or the cosiness of winter, you'll get lost in the nature that surrounds you.

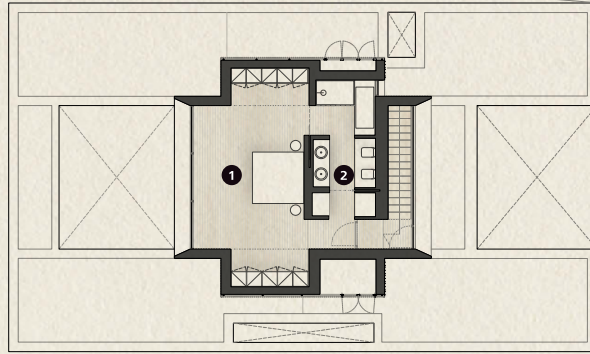
With an amiable climate all year round thanks to the Costa Brava sunshine, you'll be able to make the most of your outdoor/indoor living space, whether you'd like to entertain guests or simply enjoy the sunshine with your family.





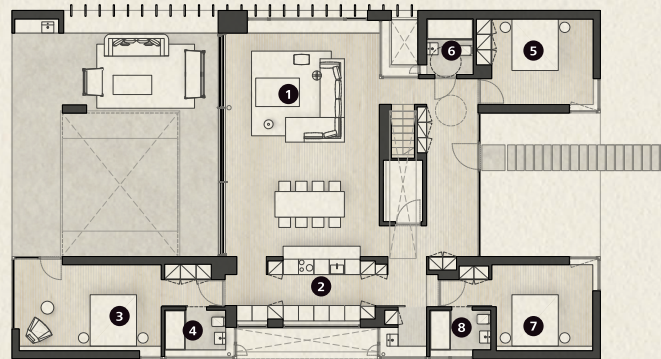
First Floor

- 1 Master Bedroom
- 2 Master Bathroom



Ground Floor

- 1 Dining Living Room
- 2 Kitchen
- 3 Bedroom
- 4 Bathroom
- 5 Bedroom
- 6 Bathroom
- 7 Bedroom
- 8 Bathroom



Specifications

Architect	Camps Felip Arquitectura
Plot	1181,63 m ²
Built area	272 m ²
Porches and Terraces	34 m ²
Bedrooms	4
Bathrooms	4
Guest toilet	1
Private Parking	49 m ²
Swimming Pool	35 m ²
Kitchen	Bulthaup, NEEF
Bathrooms	Roca Tres Geberit
Air Conditioning	Daikin or equivalent
Heating	Heating floor
Domotics	Control 4
Communications	Optical Fibre, Wi-Fi Access Points
Energy Qualification	Rating B



This is a document provided for information purposes only, the Developer reserves the right to modify the figures and features & specifications because of technical or legal circumstances. The developer reserves the right to change the finishes for others of equal or higher quality than those specified. Computer generated image for illustrative purposes only. Consumption and emission values are for guidance only and correspond to a standard home with a specific location, orientation and finishing materials.



Resort Map

PGA Catalunya
 Carretera N-II km701,
 17455 Caldes de Malavella,
 Girona, Spain

Tel: +34 972 472 957
 realestate@pgacatalunya.com
 www.pgacatalunya.com