

LA PINEDA

5



PGA CATALUNYA
GOLF AND WELLNESS

Set in a 500 hectare Catalan countryside, the unique properties at PGA Catalunya are designed to let the beauty of their woodland surroundings to pour inside.

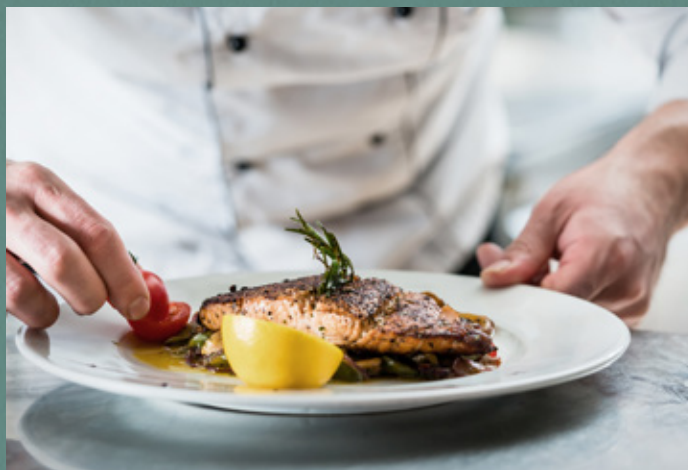
Blending nature into the architecture of our sustainable properties, the design focuses on mental and physical wellbeing throughout. Not only will residents benefit from award-winning design and architecture, they will also step outside into our uninhibited Catalan landscape and enjoy its endless mountain views.

Residents will certainly appreciate the abundance of experiences crafted to rejuvenate the mind and the body: from a round on PGA Catalunya's European Tour golf courses, the Stadium and the Tour Course, to walking through our kitchen garden to pick your own organic produce for the table.

Being among the Catalan pine trees is a truly holistic way to experience life. No aspect of our exceptional properties is left unturned, with carefully considered nutrition, comfort and exercise set to enhance everyday living.

Our IAGTO sustainability award-winning resort offers a glimpse of the future of environmentally conscious living cultivating PGA Catalunya's philosophy to celebrate the finer things in life: eating well, being well and living well.

pgacatalunya.com



PGA CATALUNYA
GOLF AND WELLNESS

5 LA PINEDA

Enjoy the Mediterranean climate With a large outdoor living space

Sit in a quiet, sun-drenched area of PGA Catalunya Golf & Wellness, La Pineda 5 benefits from vistas of the Tour Golf Course, while still being nestled in the natural habitat that surrounds it.

Designed by the Camps Felip Arquitecturia studio, La Pineda 5 is built around a stunning central patio, bathing the surrounding rooms with natural light. This is only increased by two large windows on the facade.

Outdoor living is a focal point of this home, with a large south-east facing garden giving you ample room to enjoy everything from hosting a barbeque to lounging in the sun. The trees surrounding the property take residents back to nature, while also protecting your privacy.

You'll simply float through the open-plan home before finding yourself on the terrace, where a swimming pool and Jacuzzi are waiting for you.

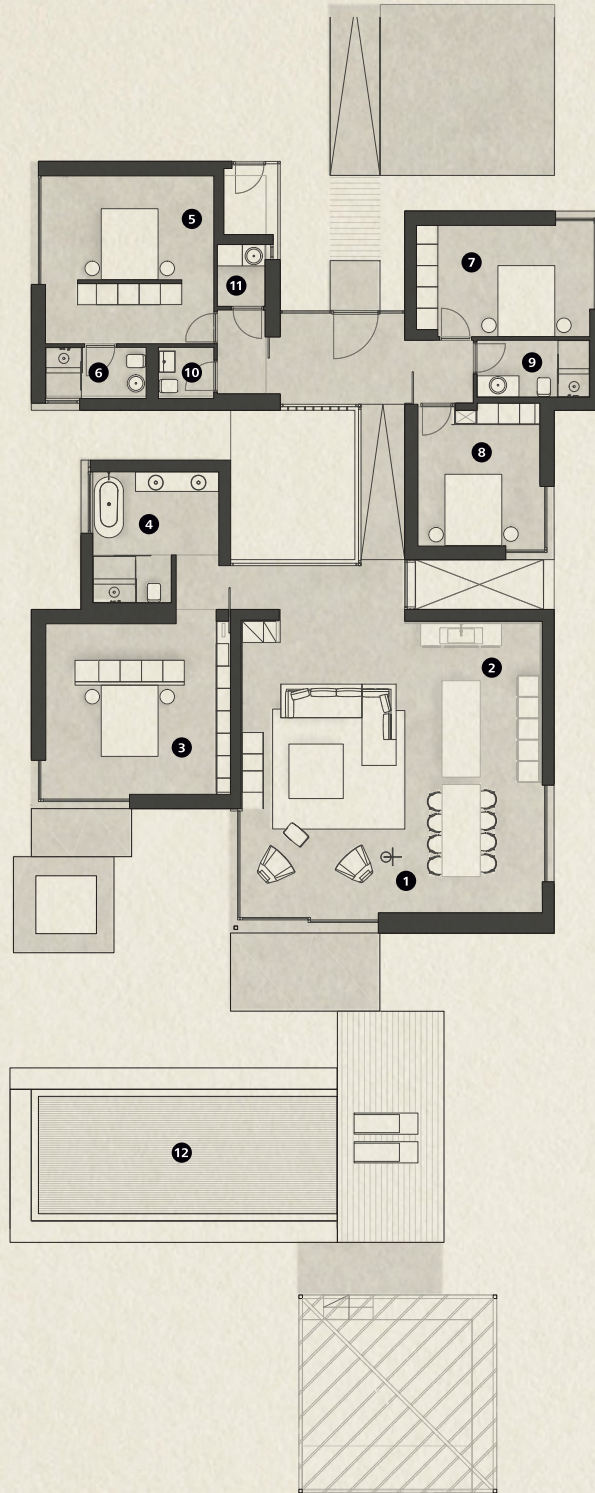
With all of our properties, eco-living is at the forefront. La Pineda 5 has been carefully curated to ensure high energy efficiency, keeping guests at the optimum temperature whatever the time of year.





Ground Floor

- 1 Dining Living Room
- 2 Kitchen
- 3 Master Bedroom
- 4 Master Bathroom
- 5 Bedroom
- 6 Bathroom
- 7 Bedroom
- 8 Bedroom
- 9 Bathroom
- 10 Guest Toilet
- 11 Laundry
- 12 Swimming



Specifications

Architect	Camps Felip Arquitectura
Plot	1144,7 m ²
Built area	313 m ²
Porches and Terraces	86 m ²
Bedrooms	4
Bathrooms	4
Guest toilet	1
Private Parking	24 m ²
Swimming Pool	21 m ²
Kitchen	Bulthaup Neff
Bathrooms	Geberit Roca Tres
Air Conditioning	Daikin
Heating	Heating floor
Domotics	Control 4
Communications	Optical Fibre, Wi-Fi Access Points
Energy Qualification	Rating B



This is a document provided for information purposes only, the Developer reserves the right to modify the figures and features & specifications because of technical or legal circumstances. The developer reserves the right to change the finishes for others of equal or higher quality than those specified. Computer generated image for illustrative purposes only. Consumption and emission values are for guidance only and correspond to a standard home with a specific location, orientation and finishing materials.



COMING UP

Resort Map

PGA Catalunya

Carretera N-II km701,
17455 Caldes de Malavella,
Girona, Spain

Tel: +34 972 472 957
realestate@pgacatalunya.com
www.pgacatalunya.com