

Burlton Hall, Shrewsbury, Shropshire





Burlton Hall, Burlton, Shrewsbury, Shropshire **SY4 5SX**

A magnificent historic country house found in an edge of village location surrounded by nearly three acres of beautiful grounds with a range of traditional and modern outbuildings.

Summary of accommodation

Ground Floor

Five reception rooms | Parlour/sitting room | Kitchen breakfast room
Boot room | Utility | Freezer room | Access to cellarage

First floor

Nine bedrooms | Six bathrooms | Shower room

Second floor

Study

Gardens and grounds

Mature gardens | Summer House | Gym | Plant room | Workshop
Steel framed barn

Listing

Grade II Listed

Tenure

Freehold

Local Authority and tax band

Shropshire County Council. Band G.



Shrewsbury
9 College Hill
Shrewsbury
SY1 1LZ

[knightfrank.co.uk](https://www.knightfrank.co.uk)

01743 664200
shrewsbury@knightfrank.com

Tom Wright
01743 664204
tom.wright@knightfrank.com

Situation

Burlton Hall is found on the outskirts of the North Shropshire village of Burlton, surrounded by rolling countryside, and with its popular public house. There is schooling in nearby Baschurch, which also has amenities including a post office and village store. A wide range of further amenities are available in the market towns of Ellesmere and Shrewsbury, both offering an extensive range of recreational and educational facilities. Schooling in the area is highly regarded both within the private and state sectors, with notable schools including Prestfelde, Packwood Haugh, Oswestry School, Shrewsbury School, Moreton Hall and Ellesmere College.

Burlton is well connected, with the A5/ M54 linking with Telford and the M6, giving access to Birmingham and the West Midlands conurbation. From Shrewsbury, the A5 also provides quick access to mid and north Wales and links with the A53 to the Potteries and the A49 to Chester and Manchester. Rail services can be accessed at Yorton (2 miles) where there are services to Shrewsbury, Crewe, Manchester and Cardiff.

Distances: Shrewsbury 9.5 miles, Ellesmere 7 miles, Oswestry 14 miles and Birmingham 52 miles. All distances are approximate.

Burlton Hall

Burlton Hall is a predominantly timber framed country house with a long and rich history believed to date from 1421. The property has been carefully restored and improved over the last sixteen years, under the careful eye of the existing owners.

The renovation has preserved some fantastic period features from both the medieval and Victorian eras. These include parquet flooring, ornate plaster cornices and ceiling roses, carved stone and wooden fireplaces, detailed architraves, stained glass, panelled doors and hand turned staircases. Of particular note, is the panelled entrance porch which reputedly dates from 1420 and forms an original part of the house. A large family kitchen with oak cabinetry, AGA and slate worktops formed part of the renovation, along with the bathrooms, which have been stylishly refitted.









The light and elegant ground floor accommodation includes five principal reception rooms, all with views over the grounds, a part panelled parlour/sitting room, kitchen breakfast room, boot room, utility, freezer room and cellarage.

The primary hand turned staircase with lantern light rises to the large first floor galleried landing, which gives access to the nine bedrooms, the principals with views across the gardens, six bathrooms, one shower room and access to the second floor study.





Remarkable period features from both the medieval and Victorian eras.

Burlton Hall

Approximate Gross Internal Floor Area
Main House 743.43 sq m / 8001 sq ft



This plan is for guidance only and must not be relied upon as a statement of fact. Attention is drawn to the important notice on the last page of the text of the Particulars.

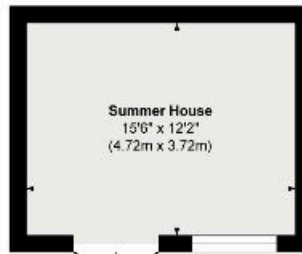




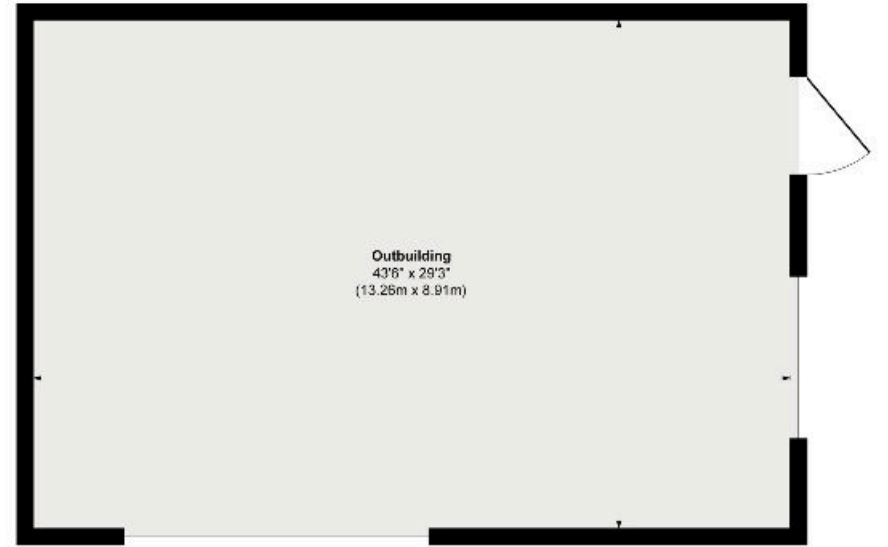
Approximate Gross Internal Floor Area
Outbuildings 337.38 sq m / 3630 sq ft
Summer House 17.55 sq m / 188 sq ft



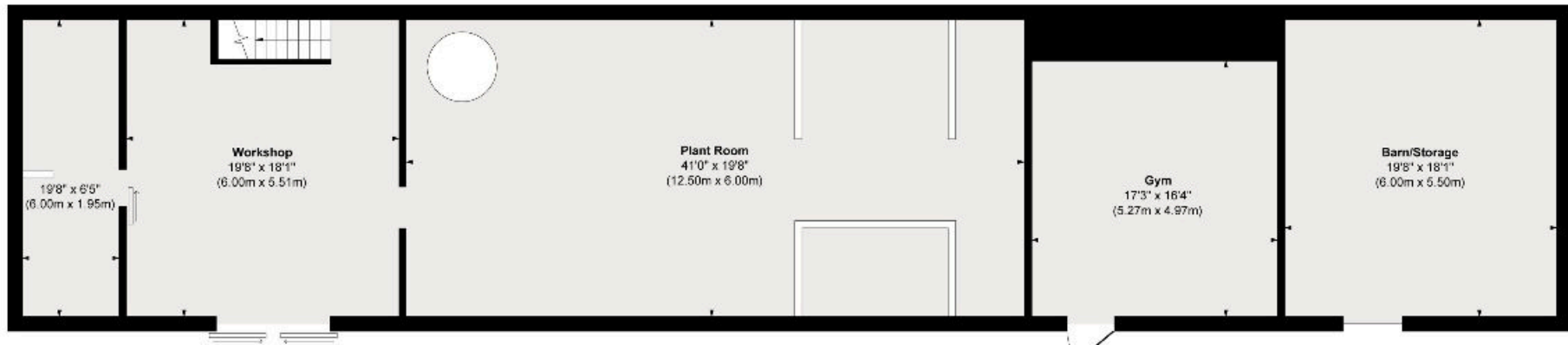
Outbuilding (Storage Above Workshop)
Approximate Floor Area
355 sq. ft
(33.06 sq. m)



Summer House
Approximate Floor Area
188 sq. ft
(17.55 sq. m)



Outbuilding
Approximate Floor Area
1271 sq. ft
(118.14 sq. m)



19'8" x 6'5"
(6.00m x 1.95m)

Workshop
19'8" x 18'1"
(6.00m x 5.51m)

Plant Room
41'0" x 19'8"
(12.50m x 6.00m)

Gym
17'3" x 16'4"
(5.27m x 4.97m)

Barn/Storage
19'8" x 18'1"
(6.00m x 5.50m)





Expansive grounds
and gardens with
terraces,
outbuildings, and
woodland.



Gardens and grounds

Electronic period wrought iron gates open to a sweeping gravelled drive with turning circle and parking.

Mainly laid to lawn, gravelled pathways lead through the grounds to the woodland beyond. There are several beautifully planted herbaceous borders, an ancient mulberry tree, specimen pines and mature shrubs, complemented by a large, paved terrace nearest to the house, with wooden summer house ideal for outdoor entertaining.

The outbuildings include a two-storey folly, along with the restored stable block now offering useful workshop, plant room, gym and barn. A large steel framed barn with adjacent hardstanding is tucked away towards the bottom of the grounds to the Southeast.

Services

Main electricity and water. Private drainage.

Directions

From Shrewsbury, take the A528 North towards Ellesmere. After approximately 9 miles, turn right in the centre of the village of Burlton, signposted Loppington and Wem. Follow this road around to the left, where Burton Hall will be found on your right hand side. W3W: [cycled.gossiped.rural](https://www.cycled.gossiped.rural)





Total Area (1.16 ha / 2.87ac)

Burlton Hall, Burlton, Shrewsbury

Location SJ 459 261

Scale 1:1,250 @ A4

Drawing No. Y22138-011.

Date 24.05.24



Based on Ordnance Survey 1:2,500
mapping with the permission of
the Controller of HMSO
©Crown Copyright
Licence No. VA 100033416

