

Spurland House

1 and 2 bedroom homes

Apartments 121 - 165



Huntercombe Walk
Huntercombe Park, Taplow
Buckinghamshire SL6 0PQ

Telephone: 01628 703 738
www.bellway.co.uk

Bellway

Huntercombe Walk

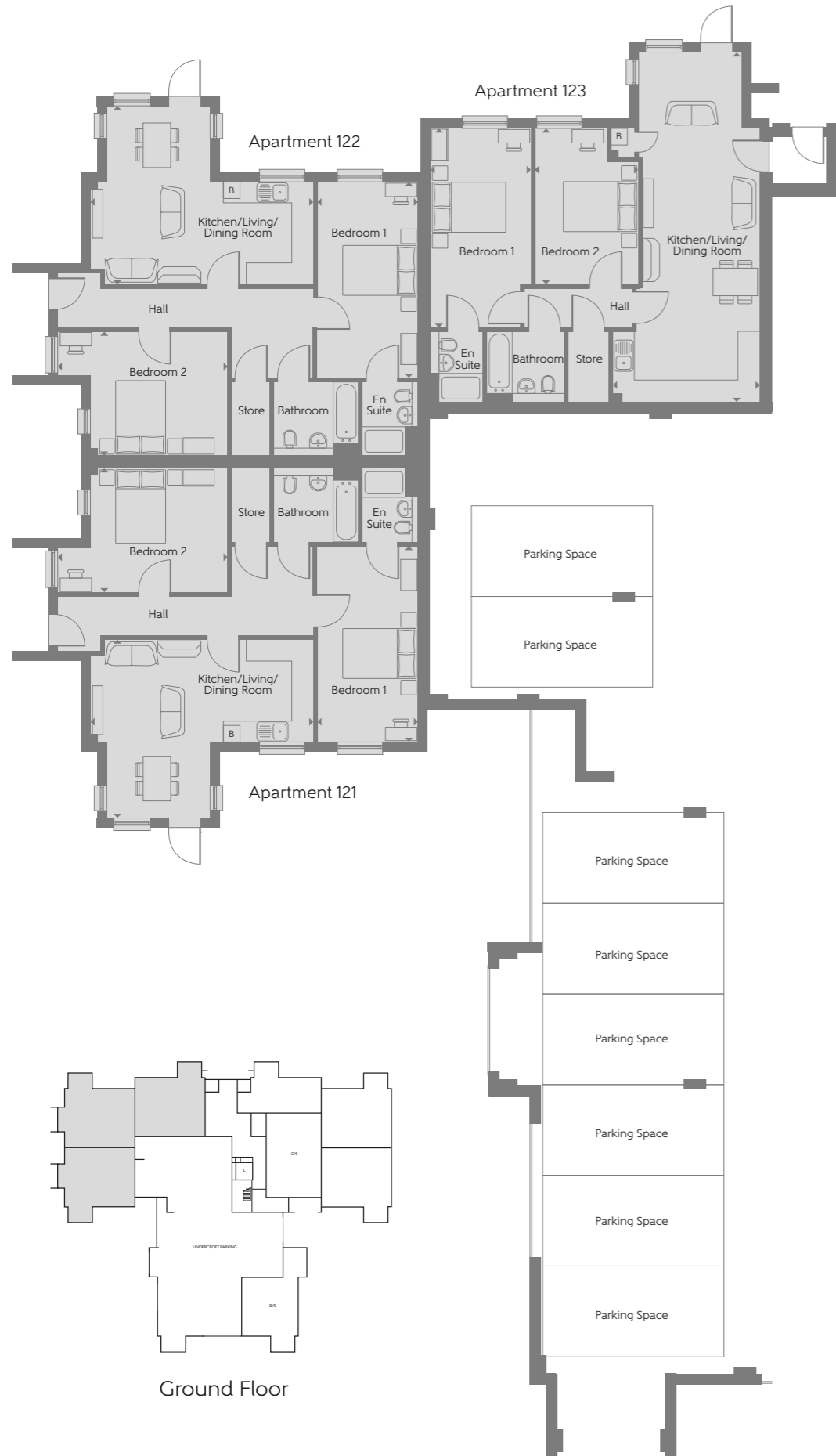
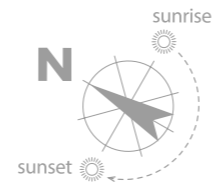
Development layout



The site plan is drawn to show the relative position of individual properties. NOT TO SCALE. This is a two dimensional drawing and will not show land contours and gradients, boundary treatments, landscaping or local authority street lighting. Footpaths subject to change. For details of individual properties and availability please refer to our Sales Advisor.

Huntercombe Walk

Ground Floor - West



**The Skylark
Apartment 121**

Kitchen/Living/ Dining Room	6.350m x 4.930m	20'10" x 16'2"
Bedroom 1	5.400m x 2.790m	17'9" x 9'2"
Bedroom 2	4.700m x 3.420m	15'5" x 11'3"
Total internal area	77 sq.m.	826 sq.ft.

**The Skylark
Apartment 122**

Kitchen/Living/ Dining Room	6.350m x 4.930m	20'10" x 16'2"
Bedroom 1	5.400m x 2.790m	17'9" x 9'2"
Bedroom 2	4.700m x 3.420m	15'5" x 11'3"
Total internal area	77 sq.m.	826 sq.ft.

**The Pipit
Apartment 123**

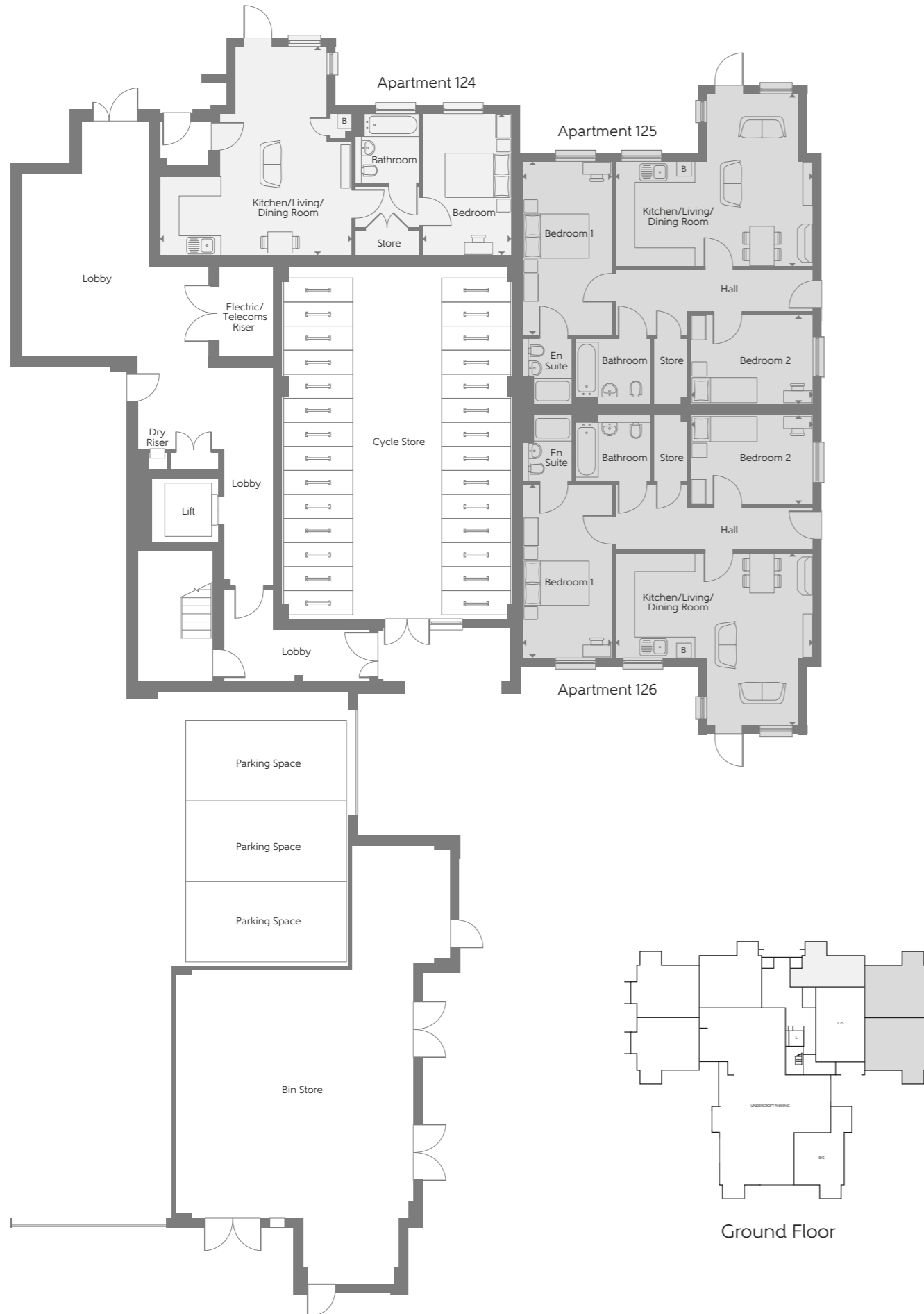
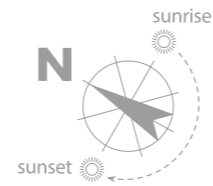
Kitchen/Living/ Dining Room	9.640m x 9.050m	31'8" x 29'8"
Bedroom 1	5.500m x 2.770m	18'1" x 9'1"
Bedroom 2	4.300m x 2.870m	14'1" x 9'5"
Total internal area	75 sq.m.	802 sq.ft.

■ 2 Bedroom B Boiler B/S Bin Store C/S Cycle Store ▶ Indicates where dimensions are taken from

Some items shown in this key may be subject to change, and positions could vary from those indicated on this floorplate. Please refer to Sales Advisor for details of your selected plot. External finishes and landscaping may vary from plot to plot. Please refer to Sales Advisor for further details. All dimensions are approximate and should not be used for carpet sizes, appliance spaces, or furniture. Furniture not to scale and all positions are indicative. We operate a policy of continuous improvement and individual features such as kitchen and bathroom layouts, doors, windows, garages and elevational treatments may vary from time to time. Consequently these particulars should be treated as general guidance only and do not constitute a contract, part of a contract or a warranty.

Huntercombe Walk

Ground Floor - East



**The Warbler
Apartment 124**

Kitchen/Living/ Dining Room	6.500m x 5.980m	21'4" x 19'7"
Bedroom	4.400m x 2.770m	14'5" x 9'1"
Total internal area	50 sq.m.	543 sq.ft.

**The Heron
Apartment 125**

Kitchen/Living/ Dining Room	6.150m x 5.370m	20'2" x 17'7"
Bedroom 1	5.400m x 2.790m	17'9" x 9'2"
Bedroom 2	3.800m x 2.770m	12'6" x 9'1"
Total internal area	74 sq.m.	799 sq.ft.

**The Heron
Apartment 126**

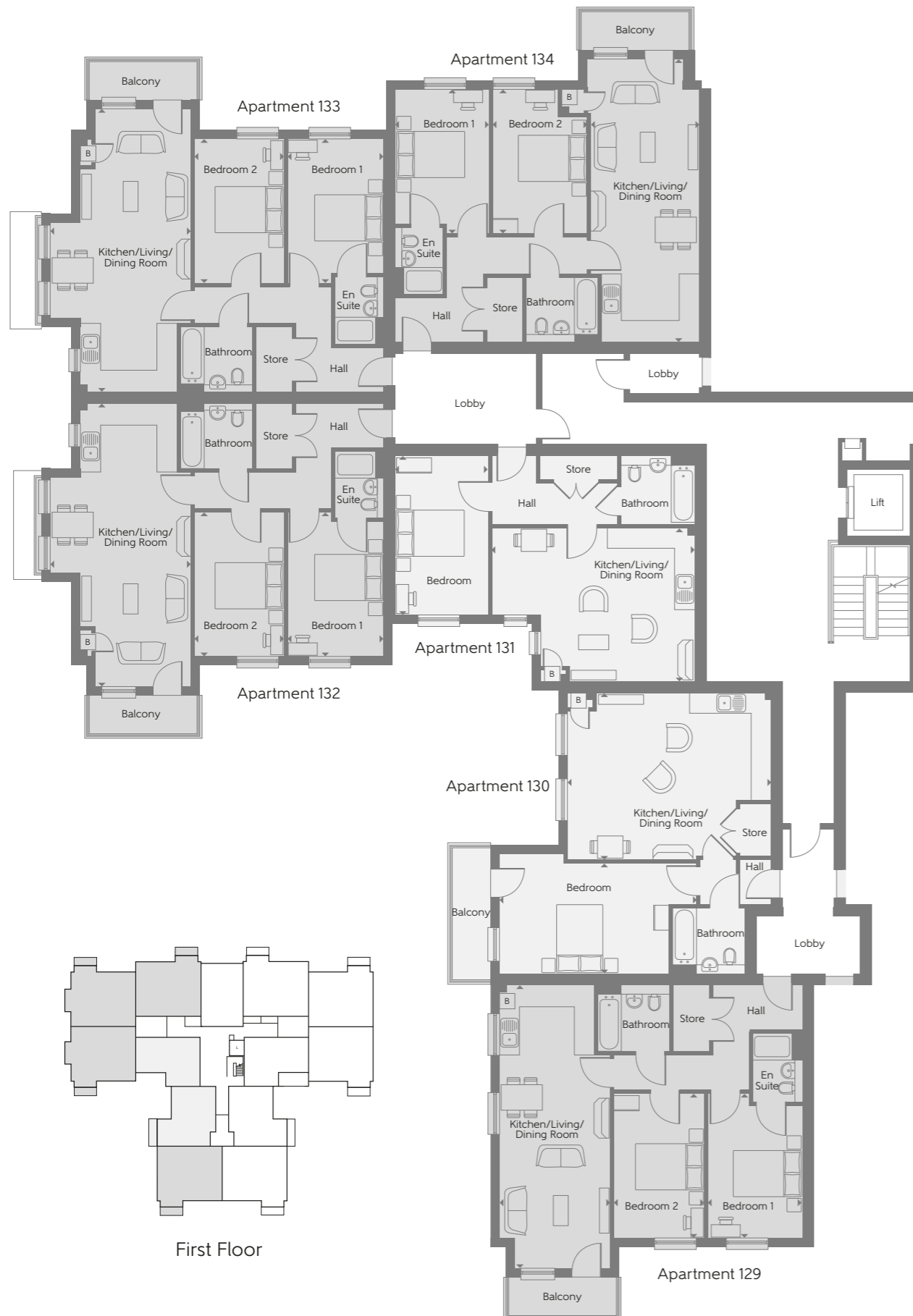
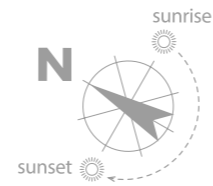
Kitchen/Living/ Dining Room	6.150m x 5.370m	20'2" x 17'7"
Bedroom 1	5.400m x 2.790m	17'9" x 9'2"
Bedroom 2	3.800m x 2.770m	12'6" x 9'1"
Total internal area	74 sq.m.	799 sq.ft.

1 Bedroom
 2 Bedroom
 B Boiler
 B/S Bin Store
 C/S Cycle Store
 ▶ Indicates where dimensions are taken from

Some items shown in this key may be subject to change, and positions could vary from those indicated on this floorplate. Please refer to Sales Advisor for details of your selected plot. External finishes and landscaping may vary from plot to plot. Please refer to Sales Advisor for further details. All dimensions are approximate and should not be used for carpet sizes, appliance spaces, or furniture. Furniture not to scale and all positions are indicative. We operate a policy of continuous improvement and individual features such as kitchen and bathroom layouts, doors, windows, garages and elevational treatments may vary from time to time. Consequently these particulars should be treated as general guidance only and do not constitute a contract, part of a contract or a warranty.

Huntercombe Walk

First Floor - West



The Grebe Apartment 129

Kitchen/Living/Dining Room	8.440m x 3.300m	27'8" x 10'10"
Bedroom 1	4.320m x 2.830m	14'2" x 9'3"
Bedroom 2	4.320m x 2.720m	14'2" x 8'11"
Total internal area	71 sq.m.	762 sq.ft.

The Bunting Apartment 132

Kitchen/Living/Dining Room	8.440m x 4.200m	27'8" x 13'9"
Bedroom 1	4.310m x 2.860m	14'2" x 9'5"
Bedroom 2	4.310m x 2.680m	14'2" x 8'10"
Total internal area	73 sq.m.	790 sq.ft.

The Kestrel Apartment 130

Kitchen/Living/Dining Room	6.080m x 4.980m	19'11" x 16'4"
Bedroom	5.860m x 3.290m	19'3" x 10'10"
Total internal area	56 sq.m.	608 sq.ft.

The Bunting Apartment 133

Kitchen/Living/Dining Room	8.440m x 4.200m	27'8" x 13'9"
Bedroom 1	4.310m x 2.860m	14'2" x 9'5"
Bedroom 2	4.310m x 2.680m	14'2" x 8'10"
Total internal area	73 sq.m.	790 sq.ft.

The Plover Apartment 131

Kitchen/Living/Dining Room	6.050m x 4.570m	19'10" x 15'0"
Bedroom	4.740m x 2.790m	15'7" x 9'2"
Total internal area	52 sq.m.	555 sq.ft.

The Egret Apartment 134

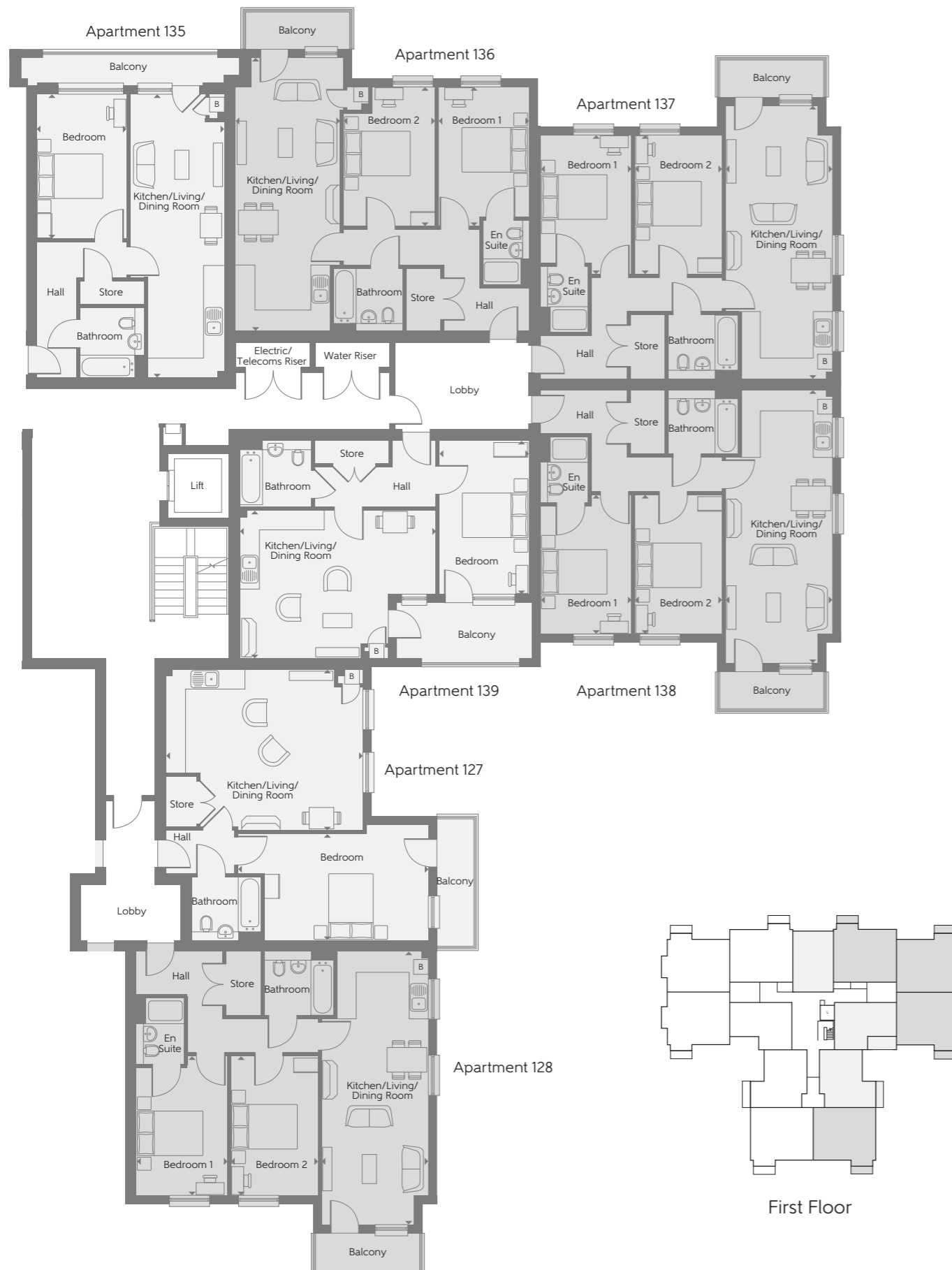
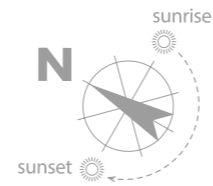
Kitchen/Living/Dining Room	8.440m x 3.240m	27'8" x 10'8"
Bedroom 1	4.360m x 2.850m	14'4" x 9'4"
Bedroom 2	4.310m x 2.840m	14'2" x 9'4"
Total internal area	71 sq.m.	765 sq.ft.

□ 1 Bedroom ■ 2 Bedroom Ⓚ Boiler ▶ Indicates where dimensions are taken from

Some items shown in this key may be subject to change, and positions could vary from those indicated on this floorplate. Please refer to Sales Advisor for details of your selected plot. External finishes and landscaping may vary from plot to plot. Please refer to Sales Advisor for further details. All dimensions are approximate and should not be used for carpet sizes, appliance spaces, or furniture. Furniture not to scale and all positions are indicative. We operate a policy of continuous improvement and individual features such as kitchen and bathroom layouts, doors, windows, garages and elevational treatments may vary from time to time. Consequently these particulars should be treated as general guidance only and do not constitute a contract, part of a contract or a warranty.

Huntercombe Walk

First Floor - East



First Floor

The Kestrel Apartment 127

Kitchen/Living/ Dining Room	6.080m x 4.980m	19'11" x 16'4"
Bedroom	5.860m x 3.290m	19'3" x 10'10"
Total internal area	56 sq.m.	608 sq.ft.

The Grebe Apartment 128

Kitchen/Living/ Dining Room	8.440m x 3.300m	27'8" x 10'10"
Bedroom 1	4.320m x 2.830m	14'2" x 9'3"
Bedroom 2	4.320m x 2.720m	14'2" x 8'11"
Total internal area	71 sq.m.	762 sq.ft.

The Starling Apartment 135

Kitchen/Living/ Dining Room	8.760m x 2.910m	28'9" x 9'7"
Bedroom	4.460m x 2.790m	14'8" x 9'2"
Total internal area	51 sq.m.	547 sq.ft.

The Egret Apartment 136

Kitchen/Living/ Dining Room	8.440m x 3.240m	27'8" x 10'8"
Bedroom 1	4.360m x 2.850m	14'4" x 9'4"
Bedroom 2	4.310m x 2.840m	14'2" x 9'4"
Total internal area	71 sq.m.	765 sq.ft.

The Grebe Apartment 137

Kitchen/Living/ Dining Room	8.440m x 3.300m	27'8" x 10'10"
Bedroom 1	4.320m x 2.830m	14'2" x 9'3"
Bedroom 2	4.320m x 2.720m	14'2" x 8'11"
Total internal area	71 sq.m.	762 sq.ft.

The Grebe Apartment 138

Kitchen/Living/ Dining Room	8.440m x 3.300m	27'8" x 10'10"
Bedroom 1	4.320m x 2.830m	14'2" x 9'3"
Bedroom 2	4.320m x 2.720m	14'2" x 8'11"
Total internal area	71 sq.m.	762 sq.ft.

The Plover Apartment 139

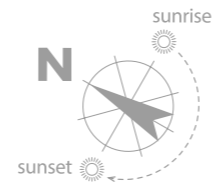
Kitchen/Living/ Dining Room	6.050m x 4.570m	19'10" x 15'0"
Bedroom	4.740m x 2.790m	15'7" x 9'2"
Total internal area	52 sq.m.	555 sq.ft.

□ 1 Bedroom □ 2 Bedroom B Boiler ▶ Indicates where dimensions are taken from

Some items shown in this key may be subject to change, and positions could vary from those indicated on this floorplate. Please refer to Sales Advisor for details of your selected plot. External finishes and landscaping may vary from plot to plot. Please refer to Sales Advisor for further details. All dimensions are approximate and should not be used for carpet sizes, appliance spaces, or furniture. Furniture not to scale and all positions are indicative. We operate a policy of continuous improvement and individual features such as kitchen and bathroom layouts, doors, windows, garages and elevational treatments may vary from time to time. Consequently these particulars should be treated as general guidance only and do not constitute a contract, part of a contract or a warranty.

Huntercombe Walk

Second Floor - West



**The Grebe
Apartment 142**

Kitchen/Living/Dining Room	8.440m x 3.300m	27'8" x 10'10"
Bedroom 1	4.320m x 2.830m	14'2" x 9'3"
Bedroom 2	4.320m x 2.720m	14'2" x 8'11"
Total internal area	71 sq.m.	762 sq.ft.

**The Bunting
Apartment 145**

Kitchen/Living/Dining Room	8.440m x 4.200m	27'8" x 13'9"
Bedroom 1	4.310m x 2.860m	14'2" x 9'5"
Bedroom 2	4.310m x 2.680m	14'2" x 8'10"
Total internal area	73 sq.m.	790 sq.ft.

**The Kestrel
Apartment 143**

Kitchen/Living/Dining Room	6.080m x 4.980m	19'11" x 16'4"
Bedroom	5.860m x 3.290m	19'3" x 10'10"
Total internal area	56 sq.m.	608 sq.ft.

**The Bunting
Apartment 146**

Kitchen/Living/Dining Room	8.440m x 4.200m	27'8" x 13'9"
Bedroom 1	4.310m x 2.860m	14'2" x 9'5"
Bedroom 2	4.310m x 2.680m	14'2" x 8'10"
Total internal area	73 sq.m.	790 sq.ft.

**The Plover
Apartment 144**

Kitchen/Living/Dining Room	6.050m x 4.570m	19'10" x 15'0"
Bedroom	4.740m x 2.790m	15'7" x 9'2"
Total internal area	52 sq.m.	555 sq.ft.

**The Egret
Apartment 147**

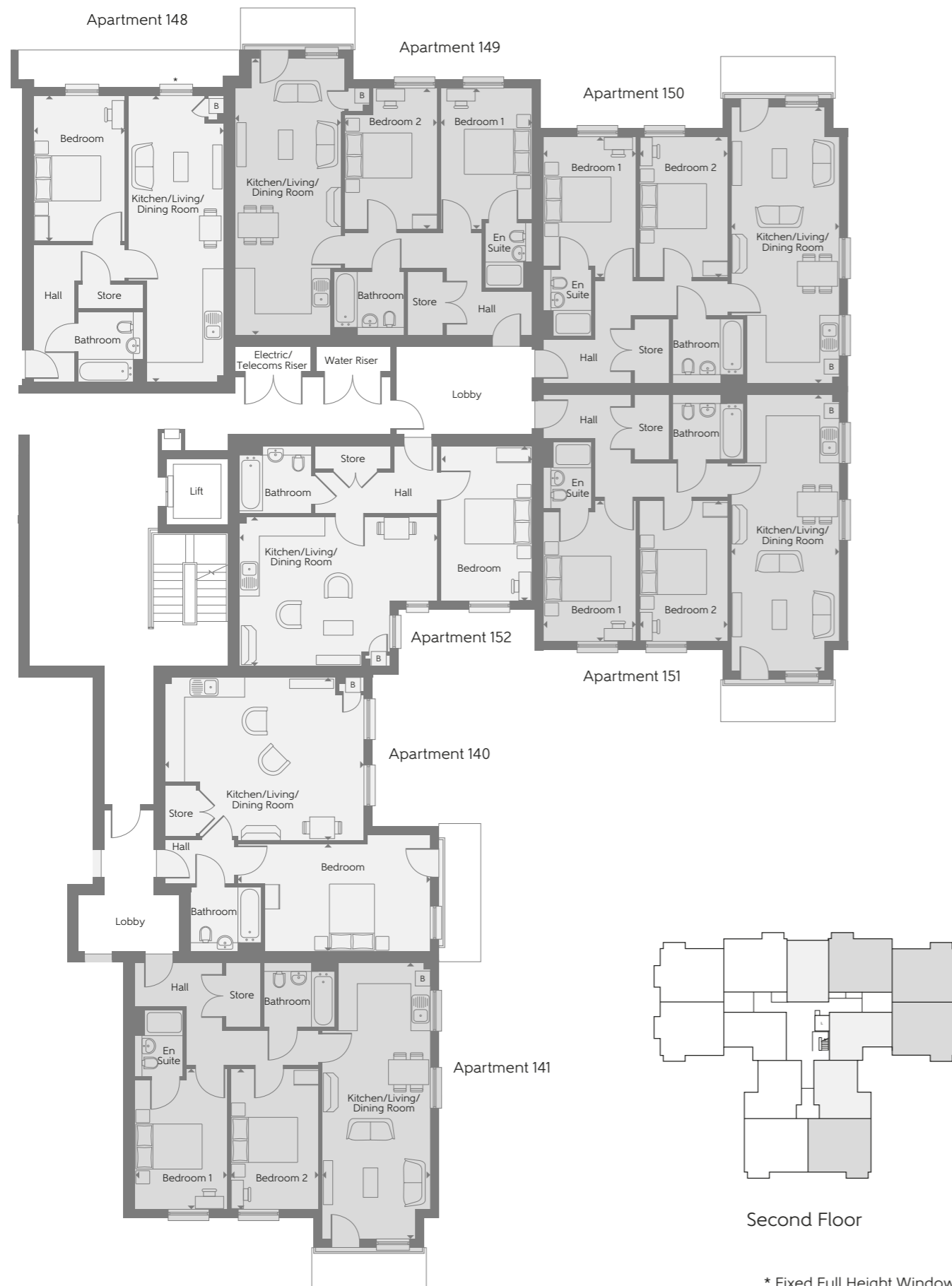
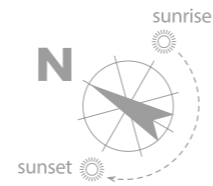
Kitchen/Living/Dining Room	8.440m x 3.240m	27'8" x 10'8"
Bedroom 1	4.360m x 2.850m	14'4" x 9'4"
Bedroom 2	4.310m x 2.840m	14'2" x 9'4"
Total internal area	71 sq.m.	765 sq.ft.

□ 1 Bedroom □ 2 Bedroom B Boiler ▶ Indicates where dimensions are taken from

Some items shown in this key may be subject to change, and positions could vary from those indicated on this floorplate. Please refer to Sales Advisor for details of your selected plot. External finishes and landscaping may vary from plot to plot. Please refer to Sales Advisor for further details. All dimensions are approximate and should not be used for carpet sizes, appliance spaces, or furniture. Furniture not to scale and all positions are indicative. We operate a policy of continuous improvement and individual features such as kitchen and bathroom layouts, doors, windows, garages and elevational treatments may vary from time to time. Consequently these particulars should be treated as general guidance only and do not constitute a contract, part of a contract or a warranty.

Huntercombe Walk

Second Floor - East



**The Kestrel
Apartment 140**

Kitchen/Living/ Dining Room	6.080m x 4.980m	19'11" x 16'4"
Bedroom	5.860m x 3.290m	19'3" x 10'10"
Total internal area	56 sq.m.	608 sq.ft.

**The Grebe
Apartment 150**

Kitchen/Living/ Dining Room	8.440m x 3.300m	27'8" x 10'10"
Bedroom 1	4.320m x 2.830m	14'2" x 9'3"
Bedroom 2	4.320m x 2.720m	14'2" x 8'11"
Total internal area	71 sq.m.	762 sq.ft.

**The Grebe
Apartment 141**

Kitchen/Living/ Dining Room	8.440m x 3.300m	27'8" x 10'10"
Bedroom 1	4.320m x 2.830m	14'2" x 9'3"
Bedroom 2	4.320m x 2.720m	14'2" x 8'11"
Total internal area	71 sq.m.	762 sq.ft.

**The Grebe
Apartment 151**

Kitchen/Living/ Dining Room	8.440m x 3.300m	27'8" x 10'10"
Bedroom 1	4.320m x 2.830m	14'2" x 9'3"
Bedroom 2	4.320m x 2.720m	14'2" x 8'11"
Total internal area	71 sq.m.	762 sq.ft.

**The Starling
Apartment 148**

Kitchen/Living/ Dining Room	8.760m x 2.910m	28'9" x 9'7"
Bedroom	4.460m x 2.790m	14'8" x 9'2"
Total internal area	51 sq.m.	547 sq.ft.

**The Plover
Apartment 152**

Kitchen/Living/ Dining Room	6.050m x 4.570m	19'10" x 15'0"
Bedroom	4.740m x 2.790m	15'7" x 9'2"
Total internal area	52 sq.m.	555 sq.ft.

**The Egret
Apartment 149**

Kitchen/Living/ Dining Room	8.440m x 3.240m	27'8" x 10'8"
Bedroom 1	4.360m x 2.850m	14'4" x 9'4"
Bedroom 2	4.310m x 2.840m	14'2" x 9'4"
Total internal area	71 sq.m.	765 sq.ft.

1 Bedroom
 2 Bedroom
 B Boiler
 ▶ Indicates where dimensions are taken from

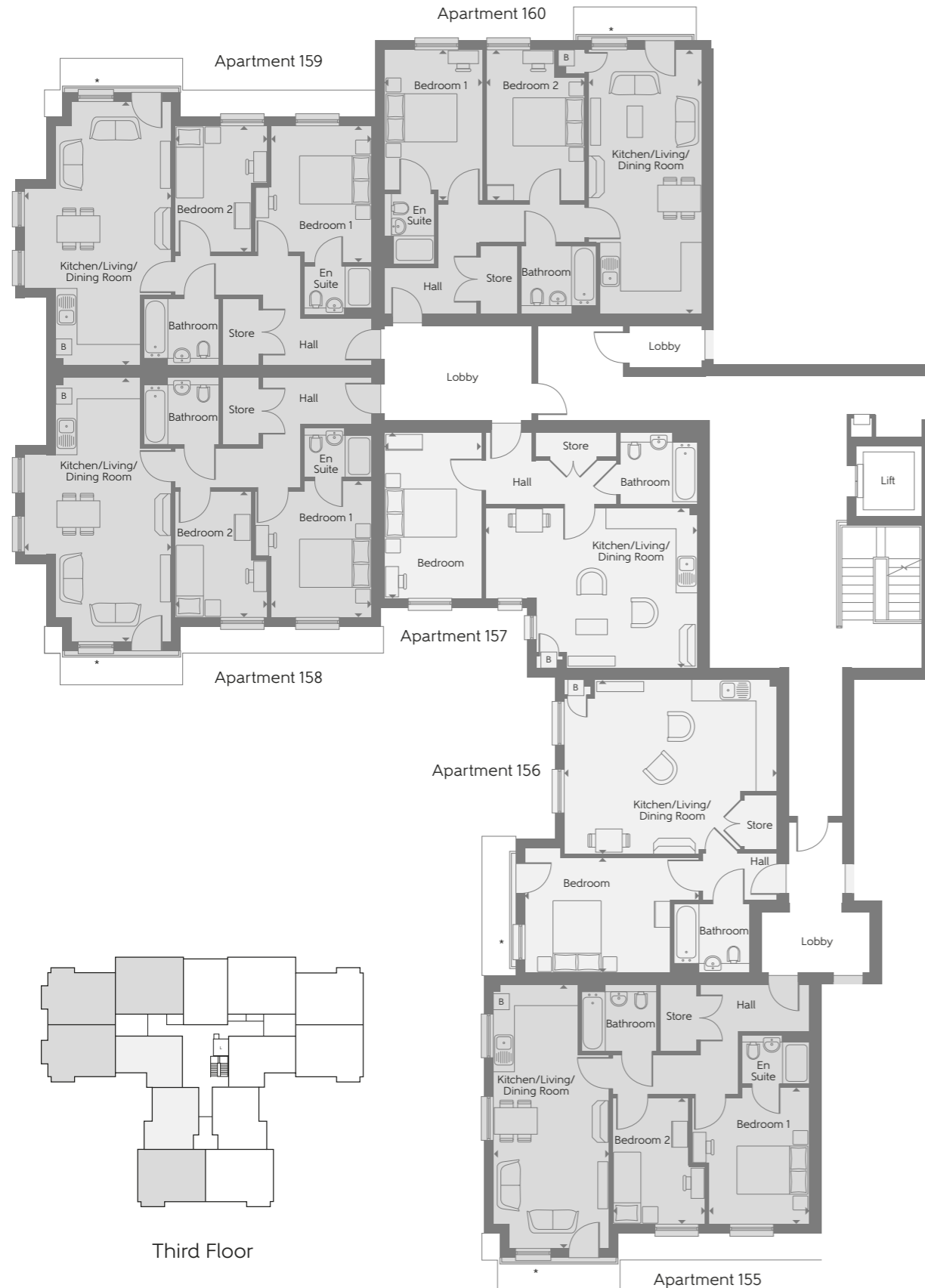
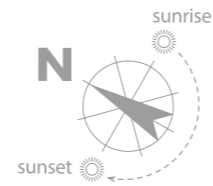
Some items shown in this key may be subject to change, and positions could vary from those indicated on this floorplate. Please refer to Sales Advisor for details of your selected plot. External finishes and landscaping may vary from plot to plot. Please refer to Sales Advisor for further details. All dimensions are approximate and should not be used for carpet sizes, appliance spaces, or furniture. Furniture not to scale and all positions are indicative. We operate a policy of continuous improvement and individual features such as kitchen and bathroom layouts, doors, windows, garages and elevational treatments may vary from time to time. Consequently these particulars should be treated as general guidance only and do not constitute a contract, part of a contract or a warranty.

Second Floor

* Fixed Full Height Window

Huntercombe Walk

Third Floor - West



Third Floor

**The Snipe
Apartment 155**

Kitchen/Living/Dining Room	7.540m x 3.300m	24'9" x 10'10"
Bedroom 1	3.910m x 3.350m	12'10" x 11'0"
Bedroom 2	3.610m x 2.660m	11'10" x 8'9"
Total internal area	64 sq.m.	693 sq.ft.

**The Kingfisher
Apartment 158**

Kitchen/Living/Dining Room	7.540m x 4.200m	24'9" x 13'9"
Bedroom 1	3.910m x 3.350m	12'10" x 11'0"
Bedroom 2	3.610m x 2.660m	11'10" x 8'9"
Total internal area	66 sq.m.	715 sq.ft.

**The Kestrel
Apartment 156**

Kitchen/Living/Dining Room	6.080m x 4.980m	19'11" x 16'4"
Bedroom	5.860m x 3.290m	19'3" x 10'10"
Total internal area	56 sq.m.	608 sq.ft.

**The Kingfisher
Apartment 159**

Kitchen/Living/Dining Room	7.540m x 4.200m	24'9" x 13'9"
Bedroom 1	3.910m x 3.350m	12'10" x 11'0"
Bedroom 2	3.610m x 2.660m	11'10" x 8'9"
Total internal area	66 sq.m.	715 sq.ft.

**The Plover
Apartment 157**

Kitchen/Living/Dining Room	6.050m x 4.570m	19'10" x 15'0"
Bedroom	4.740m x 2.790m	15'7" x 9'2"
Total internal area	52 sq.m.	555 sq.ft.

**The Lapwing
Apartment 160**

Kitchen/Living/Dining Room	7.540m x 3.240m	24'9" x 10'8"
Bedroom 1	4.310m x 2.820m	14'2" x 9'3"
Bedroom 2	4.310m x 2.820m	14'2" x 9'3"
Total internal area	69 sq.m.	738 sq.ft.

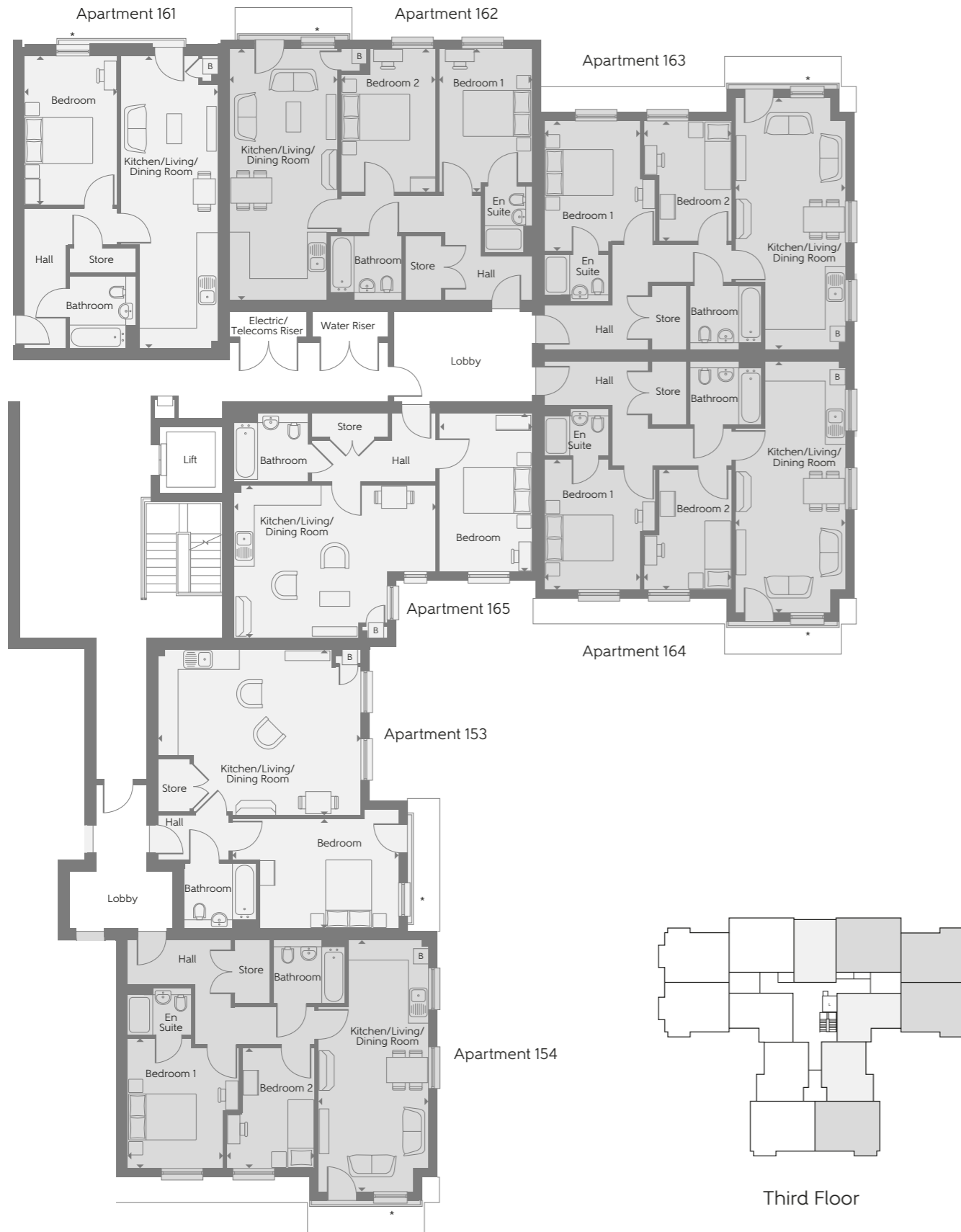
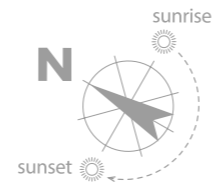
□ 1 Bedroom □ 2 Bedroom B Boiler ▶ Indicates where dimensions are taken from

Some items shown in this key may be subject to change, and positions could vary from those indicated on this floorplate. Please refer to Sales Advisor for details of your selected plot. External finishes and landscaping may vary from plot to plot. Please refer to Sales Advisor for further details. All dimensions are approximate and should not be used for carpet sizes, appliance spaces, or furniture. Furniture not to scale and all positions are indicative. We operate a policy of continuous improvement and individual features such as kitchen and bathroom layouts, doors, windows, garages and elevational treatments may vary from time to time. Consequently these particulars should be treated as general guidance only and do not constitute a contract, part of a contract or a warranty.

* Fixed Shut Window

Huntercombe Walk

Third Floor - East



Third Floor

* Fixed Shut Window

The Kestrel Apartment 153

Kitchen/Living/Dining Room	6.080m x 4.980m	19'11" x 16'4"
Bedroom	5.860m x 3.290m	19'3" x 10'10"
Total internal area	56 sq.m.	608 sq.ft.

The Snipe Apartment 163

Kitchen/Living/Dining Room	7.540m x 3.300m	24'9" x 10'10"
Bedroom 1	3.910m x 3.350m	12'10" x 11'0"
Bedroom 2	3.610m x 2.660m	11'10" x 8'9"
Total internal area	64 sq.m.	693 sq.ft.

The Snipe Apartment 154

Kitchen/Living/Dining Room	7.540m x 3.300m	24'9" x 10'10"
Bedroom 1	3.910m x 3.350m	12'10" x 11'0"
Bedroom 2	3.610m x 2.660m	11'10" x 8'9"
Total internal area	64 sq.m.	693 sq.ft.

The Snipe Apartment 164

Kitchen/Living/Dining Room	7.540m x 3.300m	24'9" x 10'10"
Bedroom 1	3.910m x 3.350m	12'10" x 11'0"
Bedroom 2	3.610m x 2.660m	11'10" x 8'9"
Total internal area	64 sq.m.	693 sq.ft.

The Starling Apartment 161

Kitchen/Living/Dining Room	8.760m x 2.910m	28'9" x 9'7"
Bedroom	4.460m x 2.790m	14'8" x 9'2"
Total internal area	51 sq.m.	547 sq.ft.

The Plover Apartment 165

Kitchen/Living/Dining Room	6.050m x 4.570m	19'10" x 15'0"
Bedroom	4.740m x 2.790m	15'7" x 9'2"
Total internal area	52 sq.m.	555 sq.ft.

The Lapwing Apartment 162

Kitchen/Living/Dining Room	7.540m x 3.240m	24'9" x 10'8"
Bedroom 1	4.310m x 2.820m	14'2" x 9'3"
Bedroom 2	4.310m x 2.820m	14'2" x 9'3"
Total internal area	69 sq.m.	738 sq.ft.

□ 1 Bedroom □ 2 Bedroom B Boiler ▶ Indicates where dimensions are taken from

Some items shown in this key may be subject to change, and positions could vary from those indicated on this floorplate. Please refer to Sales Advisor for details of your selected plot. External finishes and landscaping may vary from plot to plot. Please refer to Sales Advisor for further details. All dimensions are approximate and should not be used for carpet sizes, appliance spaces, or furniture. Furniture not to scale and all positions are indicative. We operate a policy of continuous improvement and individual features such as kitchen and bathroom layouts, doors, windows, garages and elevational treatments may vary from time to time. Consequently these particulars should be treated as general guidance only and do not constitute a contract, part of a contract or a warranty.



Specification

UPVC double glazed windows
Excellent selection of contemporary and traditional kitchen units and worktops to choose from*
Stainless steel oven, hob and extractor
Contemporary sanitaryware from Roca
Mains linked smoke detectors
Selection of wall tiling options to bathrooms

Photographs are used for illustrative purposes only and depict typical interiors from previous Bellway developments. *Subject to build stage.

