



OFFICE TO LET / FOR SALE

## CONSORT HOUSE

Prince's Road, Weybridge, KT13 9BQ

FOR SALE / TO LET - SELF CONTAINED OFFICE IN WEYBRIDGE CENTRE.

5,000 TO 15,599 SQ FT (464.52 TO 1,449.19 SQ M)



**BNP PARIBAS  
REAL ESTATE**

[www.realestate.bnpparibas.co.uk](http://www.realestate.bnpparibas.co.uk)

## CONSORT HOUSE

Prince's Road, Weybridge, KT13

TO REQUEST A VIEWING CALL US



BNP PARIBAS  
REAL ESTATE

www.realestate.bnpparibas.co.uk

## DETAILS



### DESCRIPTION

Consort House was built in the late 1990s as a standalone good quality headquarters building, split over three floors totaling approximately 15,600 sq.ft. The office provides open plan floor areas with meeting rooms and kitchenettes located on the first and second floor, with a shower room located on the ground floor. The space has an air conditioning system throughout the three floors, as well as raised floors and a floor to ceiling height of 2.7m. The property benefits from a ground floor shower room as well as 85 car parking spaces.

### ACCOMMODATION

The accommodation comprises the following areas:

Name	sq ft	sq m	Availability
Ground	2,677	248.70	Available
1st	6,027	559.93	Available
2nd	5,983	555.84	Available
3rd	912	84.73	Available
<b>Total</b>	<b>15,599</b>	<b>1,449.20</b>	

### KEY FEATURES

- Self Contained Headquarter Office
- 85 Car Parking Spaces 1:185
- Town Centre Location
- Wc's & Shower Facilities

### OUTGOINGS

- **Rent:** £30 per sq ft
- **Price:** Price on Application
- **Rates:** n/a
- **Service charge:** n/a

## CONSORT HOUSE

Prince's Road, Weybridge, KT13

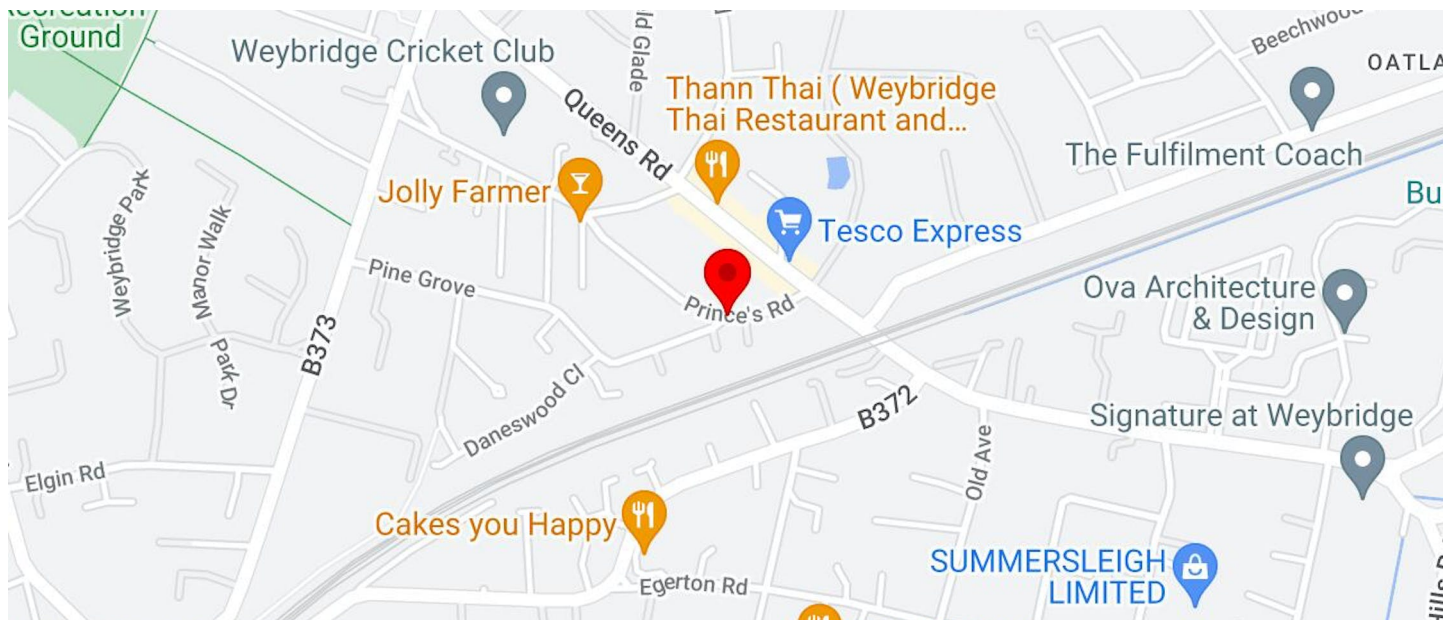
TO REQUEST A VIEWING CALL US



**BNP PARIBAS  
REAL ESTATE**

www.realestate.bnpparibas.co.uk

## LOCATION



Consort House sits on the corner of Prince's Road and Queens Road, with the Weybridge mainline station a short 10 minute walk away. A frequent and fast service is provided into London Waterloo which takes just under 30 mins.

Junction 10 of the M25 is a 10 minute drive away, Queens road provides great amenities which include Tesco Express as well as a number of restaurant's, Cafes

## CONTACT US

Will Foster

[will.foster@realestate.bnpparibas](mailto:will.foster@realestate.bnpparibas)

BNP Paribas Real Estate (National Office Agency)  
24 Savile Row, London, W1S 2ES

[www.realestate.bnpparibas.co.uk](http://www.realestate.bnpparibas.co.uk)

[realestate.enquiries@bnpparibas.com](mailto:realestate.enquiries@bnpparibas.com)  
[linkedin.com/company/bnp-paribas-real-estate/@BNPPRE\\_UK](https://www.linkedin.com/company/bnp-paribas-real-estate/@BNPPRE_UK)

Misrepresentation Act 1967: BNP Paribas Real Estate Advisory & Property Management UK Limited for themselves and for the vendor(s) or lessor(s) of this property whose agents they are, give notice that: 1. These particulars do not constitute, nor constitute any part of, an offer or contract. 2. None of the statements contained in these particulars as to the property are to be relied on as statements or representations of fact. 3. Any intending purchaser or lessee must satisfy himself by inspection or otherwise as to the correctness of each of the statements contained in these particulars. 4. The vendor(s) or lessor(s) do not make or give and neither BNP Paribas Real Estate Advisory & Property Management UK Limited nor any person in their employment has any authority to make or give, any representation or warranty whatever in relation to this property. Finance Act 2013: Unless otherwise stated all prices and rents are quote exclusive of VAT. The Business Protection from Misleading Marketing Regulations 2008: These details are believed to be correct at the time of compilation but may be subject to subsequent amendment. Generated by Agentsinsight / Generated on 28/12/2023

CONSORT HOUSE, PRINCE'S ROAD, WEYBRIDGE, KT13

9BQ

TO REQUEST A VIEWING CALL US ON



**BNP PARIBAS  
REAL ESTATE**

[www.realestate.bnpparibas.co.uk](http://www.realestate.bnpparibas.co.uk)



CONSORT HOUSE, PRINCE'S ROAD, WEYBRIDGE, KT13

9BQ

TO REQUEST A VIEWING CALL US ON

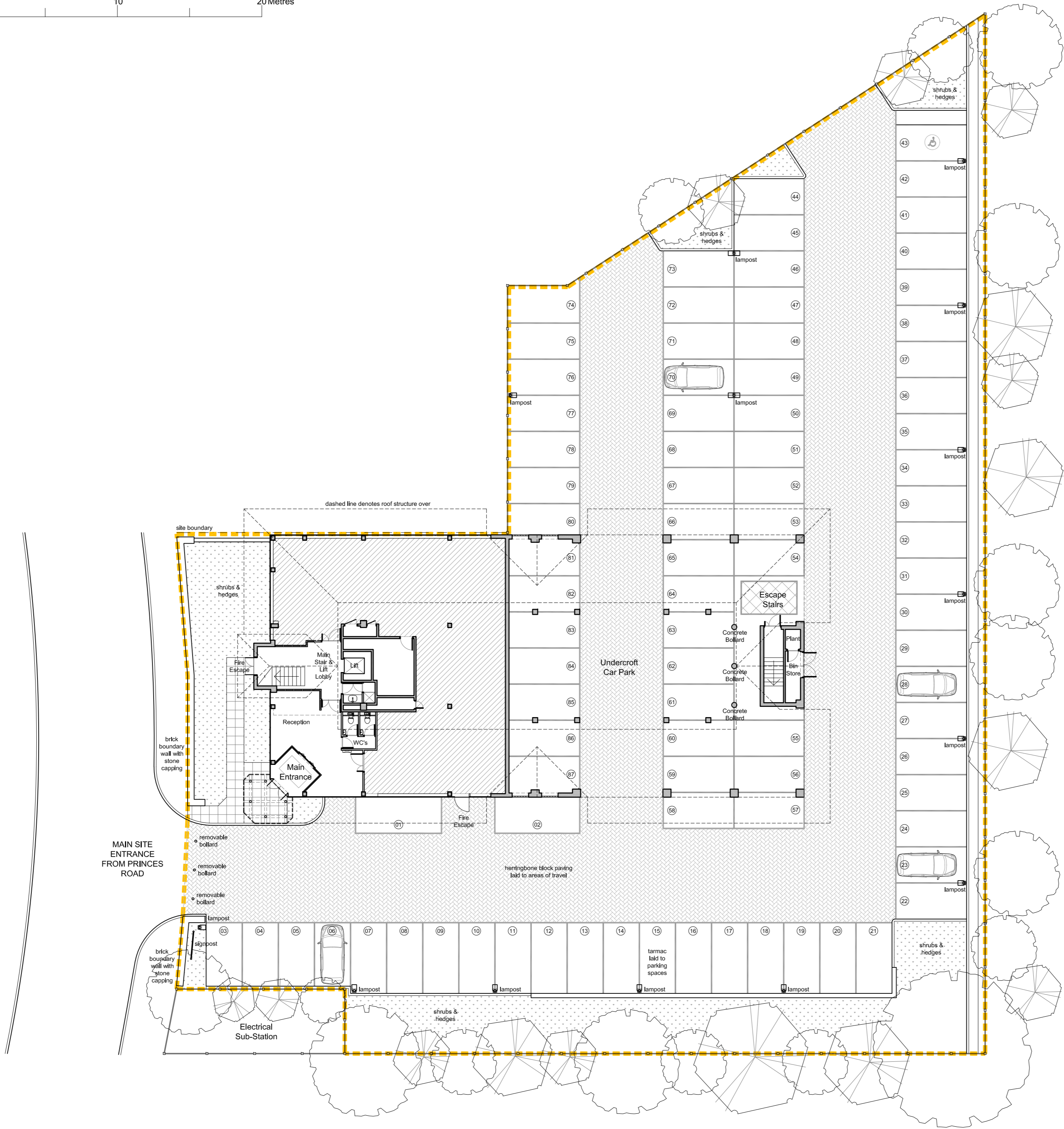


**BNP PARIBAS  
REAL ESTATE**

[www.realestate.bnpparibas.co.uk](http://www.realestate.bnpparibas.co.uk)



# Consort House Ground Floor & Site Plan (1:200@A2)



**COPYRIGHT**  
 copyright © this drawing may not be copied (in whole or in part), retained or disclosed without the prior written consent of the planning office limited

**SCALE**  
 dimensions should be scaled with care. contractors must verify all dimensions before starting work, any discrepancies are to be reported to the planning office limited

**Revisions:**

* drawing created	21.01.18
A layouts revised to client feedback	29.01.18
B layouts revised to client feedback	31.01.18
C pack updated with services, ground floor layout & site information. signed off GA's remain the same as Revision B.	07.02.18
D changes to partitions and desk layouts on both floors	03.05.18



**Site Address:**  
 Consort House  
 1 Princes Road  
 Weybridge, KT13 9TU

**Client:**  
 Toshiba

**Project Title:**  
 New Weybridge Office

**Drawing Title:**  
 Existing Site Plan

**Drawing Scale:** 1:200@A2  
**Issue Date:** 03.05.18

**Drawn by:** BRC  
**Revision:** D

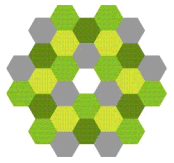
**Drawing Number:**  
 TPO576-06-09D

**Drawing Number:**  
**PRELIMINARY**

TPO Design + (The Planning Office Limited)  
 25 Peppard Road, Sonning Common, RG49SS  
 T: 07747 561 463  
 E: enquiries@tpodesign.co.uk  
 W: www.tpodesign.co.uk

# HM Land Registry Current title plan

Title number **SY799835**  
Ordnance Survey map reference **TQ0864SW**  
Scale **1:1250**  
Administrative area **Surrey : Elmbridge**



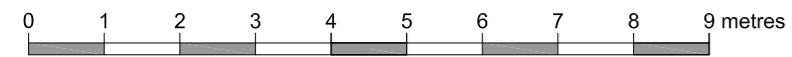
©Crown Copyright. Produced by HM Land Registry. Reproduction in whole or in part is prohibited without the prior written permission of Ordnance Survey. Licence Number 100026316



This is a print of the view of the title plan obtained from HM Land Registry showing the state of the title plan on 22 December 2022 at 12:50:07. This title plan shows the general position, not the exact line, of the boundaries. It may be subject to distortions in scale. Measurements scaled from this plan may not match measurements between the same points on the ground.

This title is dealt with by HM Land Registry, Durham Office.

# Consort House - Second Floor (1:100@A2)



**Partitioning Key:**

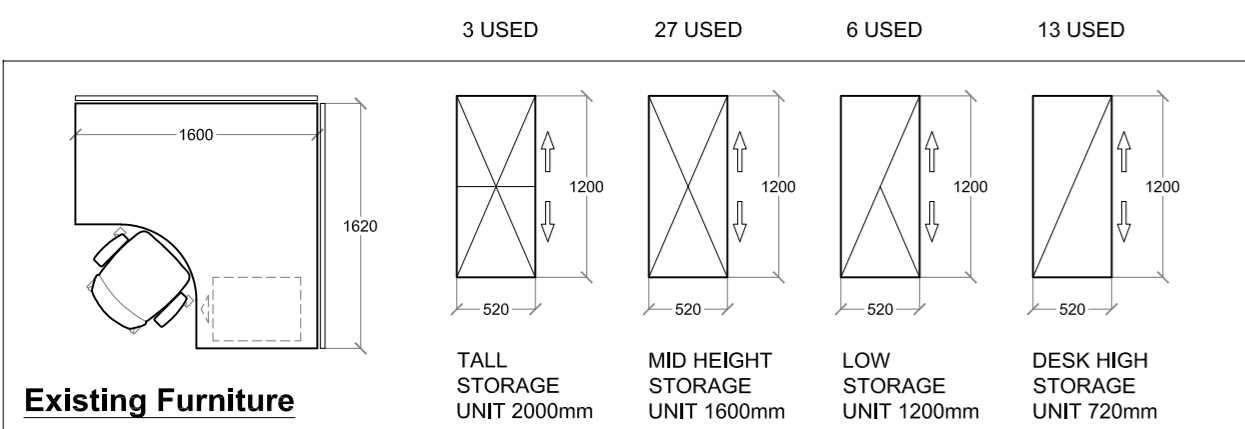
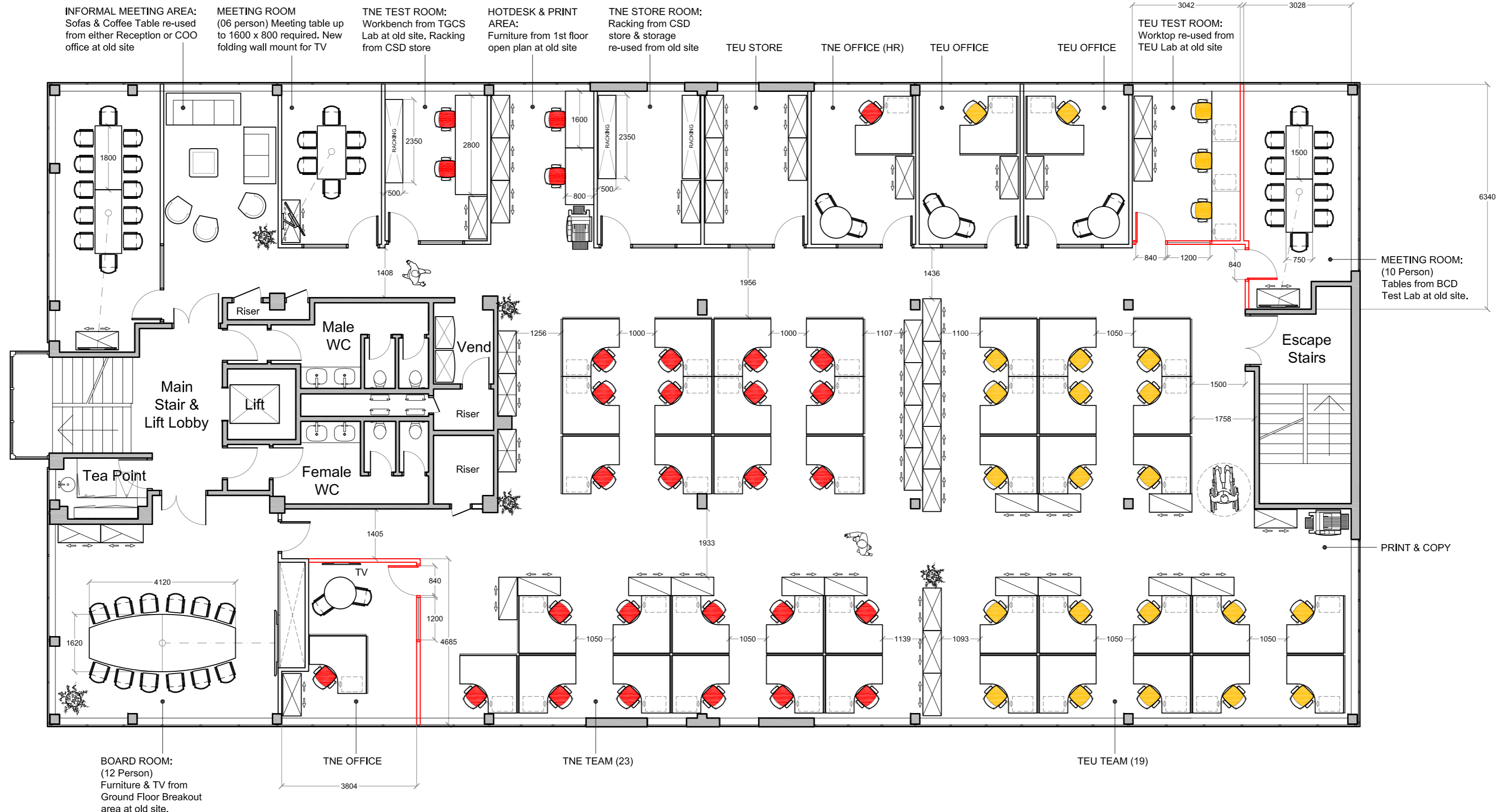
- New Partitions
- Existing Partitions

**T.N.E.**

- 02 Office
- 23 Desks
- 03 Hotdesks

**T.E.U.**

- 02 Office
- 19 Desks
- 00 Hotdesks



**COPYRIGHT**  
 copyright © this drawing may not be copied (in whole or in part), retained or disclosed without the prior written consent of the planning office limited

**SCALE**  
 dimensions should be scaled with care. contractors must verify all dimensions before starting work, any discrepancies are to be reported to the planning office limited

- Revisions:**
- \* drawing created 21.01.18
  - A layouts revised to client feedback 29.01.18
  - B layouts revised to client feedback 31.01.18
  - C pack updated with services, ground floor layout & site information. signed off GA's remain the same as Revision B. 07.02.18
  - D changes to partitions and desk layouts on both floors 04.04.18



**Site Address:**  
 Consort House  
 1 Princes Road  
 Weybridge, KT13 9TU

**Client:**  
 Toshiba

**Project Title:**  
 New Weybridge Office

**Drawing Title:**  
 Proposed Second Floor  
 General Arrangement

**Drawing Scale:** 1:100@A2  
**Issue Date:** 04.04.18

**Drawn by:** BRC  
**Revision:** D

**Drawing Number:**  
 TPO576-06-07D

**Drawing Number:**  
**PRELIMINARY**