



## Forest Court, Hemnall Street

Epping, CM16 4LY

Located just yards for Epping High Street and only 0.4 miles to Epping Underground Station is this two bedroom first floor apartment the accommodation includes an open plan reception room and kitchen, two bedrooms and bathroom, externally there is one allocated parking space.

**£299,995 - Leasehold - Council Tax: D**

# 76 Hemnall Street

Epping, CM16 4LY



## Entrance Lobby

Entrance door, double glazed window to rear, carpet.

## Hallway

Door to entrance lobby, intercom system, under floor heating, carpet, cupboard.

## Reception Room

18'10 x 8'8 (5.74m x 2.64m)  
Two double glazed windows to front, underfloor heating, carpet. Open plan to kitchen.

## Kitchen Area

7'10 x 6'9 (2.39m x 2.06m)  
Stainless steel single drainer sink, electric hob, oven, extractor, integrated dish washer, washing machine, fridge freezer, wall and base units, part tiled walls, under

floor heating, vinyl flooring. Open plan to reception room.

## Bedroom One

10'8 x 7'10 (3.25m x 2.39m)  
Double glazed window to rear, under floor heating, carpet.

## Bedroom Two

7'2 x 6'11 (2.18m x 2.11m)  
Double glazed window to rear, under floor heating, carpet.

## Bathroom

Panelled bath with overhead shower, low level WC, pedestal wash hand basin, heated towel rail, extractor, part tiled walls, vinyl flooring.

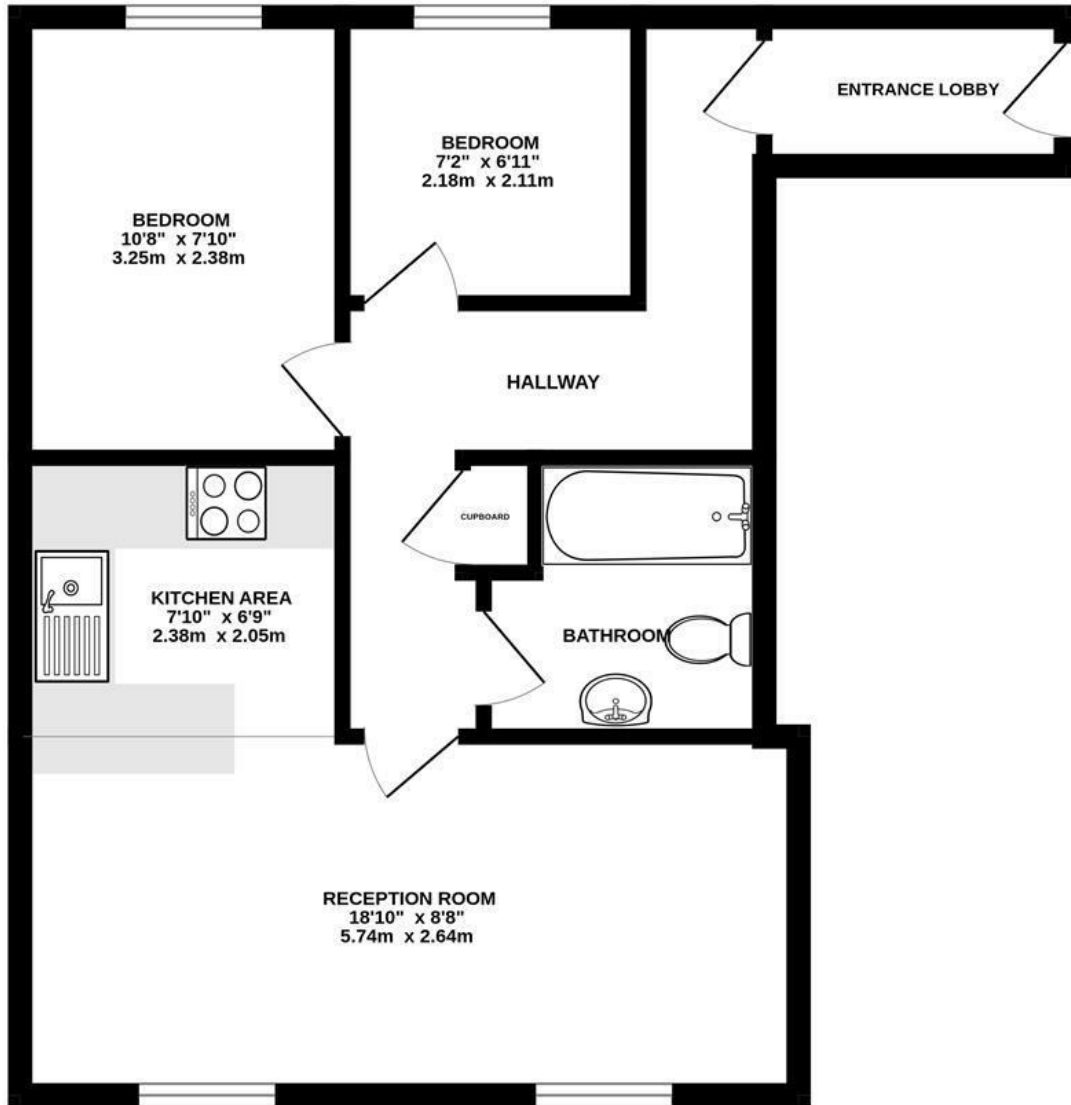
## Parking

One allocated parking space.





**FIRST FLOOR**  
502 sq.ft. (46.7 sq.m.) approx.



**TOTAL FLOOR AREA : 502 sq.ft. (46.7 sq.m.) approx.**

Whilst every attempt has been made to ensure the accuracy of the floorplan contained here, measurements of doors, windows, rooms and any other items are approximate and no responsibility is taken for any error, omission or mis-statement. This plan is for illustrative purposes only and should be used as such by any prospective purchaser. The services, systems and appliances shown have not been tested and no guarantee as to their operability or efficiency can be given.  
Made with Metropix ©2024

These particulars, whilst believed to be accurate are set out as a general outline only for guidance and do not constitute any part of an offer or contract. Intending purchasers should not rely on them as statements of representation of fact, but must satisfy themselves by inspection or otherwise as to their accuracy. No person in this firm's employment has the authority to make or give any representation or warranty in respect of the property.

Material Information:  
Council Tax Band: D  
Tenure: Leasehold

