



MOVE INN ESTATES

MAKING THE RIGHT MOVE



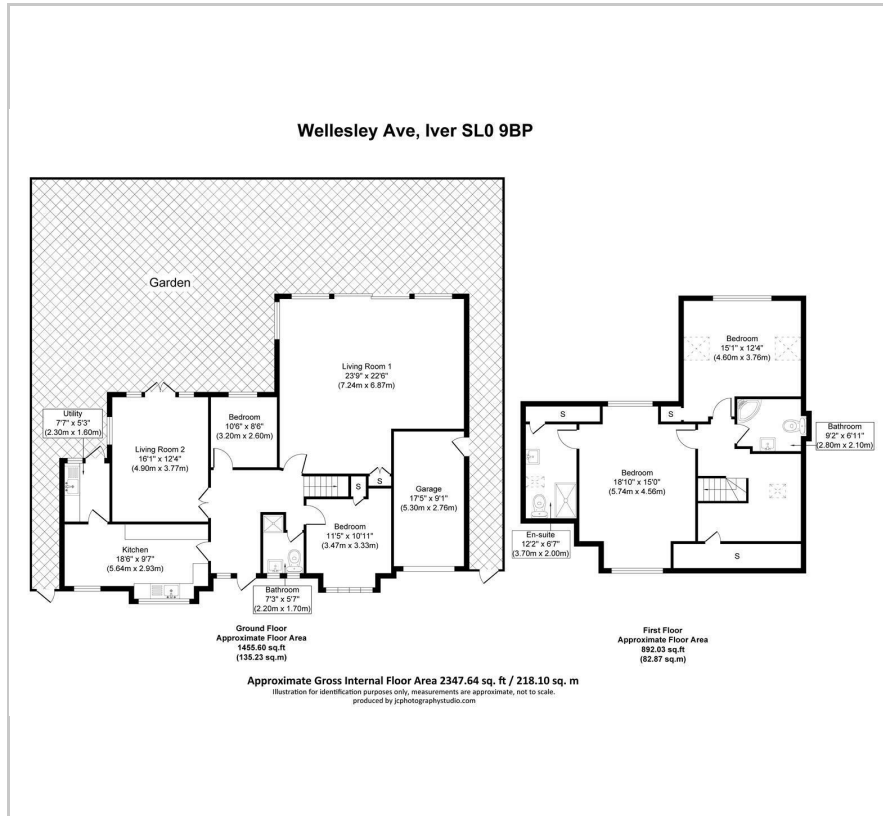
Wellesley Avenue

, Iver, SL0 9BP

Price Guide £1,200,000



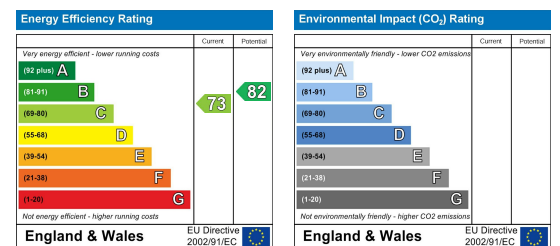
Floor Plan



Area Map



Energy Efficiency Graph



Viewing

Please contact our Move Inn Iver Office on 01753900950 if you wish to arrange a viewing appointment for this property or require further information.

- Inviting kitchen flows into a cozy secondary living room, with a convenient adjacent utility room.
- Expansive main living room with large windows offering serene garden views, ideal for gatherings and relaxation.
- Versatile ground-floor bedroom suitable as a guest suite or home office, plus a modern bathroom.
- Upstairs features two generously sized bedrooms, including a master suite with an en-suite bathroom and a contemporary family bathroom.
- Landscaped garden, secure garage, and ample driveway parking; located in a tranquil, sought-after neighbourhood.



Discover your dream home on Wellesley Avenue, Iver, SL0 9BP—a beautifully designed and expansive family retreat that seamlessly blends style, comfort, and functionality. This stunning property offers everything you need for a contemporary lifestyle, with ample room for every family member to thrive.

As you step inside, you're greeted by a spacious and inviting kitchen, perfect for whipping up gourmet meals or casual family breakfasts. The kitchen flows effortlessly into a cozy yet elegant secondary living room, where you can enjoy intimate gatherings or quiet evenings in. Adjacent is a handy utility room to keep everything tidy and organised.

The pièce de résistance of the ground floor is the expansive main living room, a sun-drenched space with large windows that offer serene views of the garden. This room is the heart of the home, ideal for hosting lively get-togethers or simply relaxing in your own sanctuary. Also on this floor, you'll find a versatile two additional bedrooms, perfect as a guest suite or a home office, along with a modern bathroom that adds convenience and style.

Ascend the staircase to find two generously sized bedrooms, each designed with comfort and relaxation in mind. The master suite is a true retreat, featuring an elegant en-suite bathroom, creating a serene space where you can unwind after a long day. The additional bedrooms are bright and airy, offering plenty of space for personalisation, and they share access to a chic, contemporary family bathroom.



These particulars, whilst believed to be accurate are set out as a general outline only for guidance and do not constitute any part of an offer or contract. Intending purchasers should not rely on them as statements of representation of fact, but must satisfy themselves by inspection or otherwise as to their accuracy. No person in this firm's employment has the authority to make or give any representation or warranty in respect of the property.