



**MOVE INN ESTATES**  
MAKING THE RIGHT MOVE



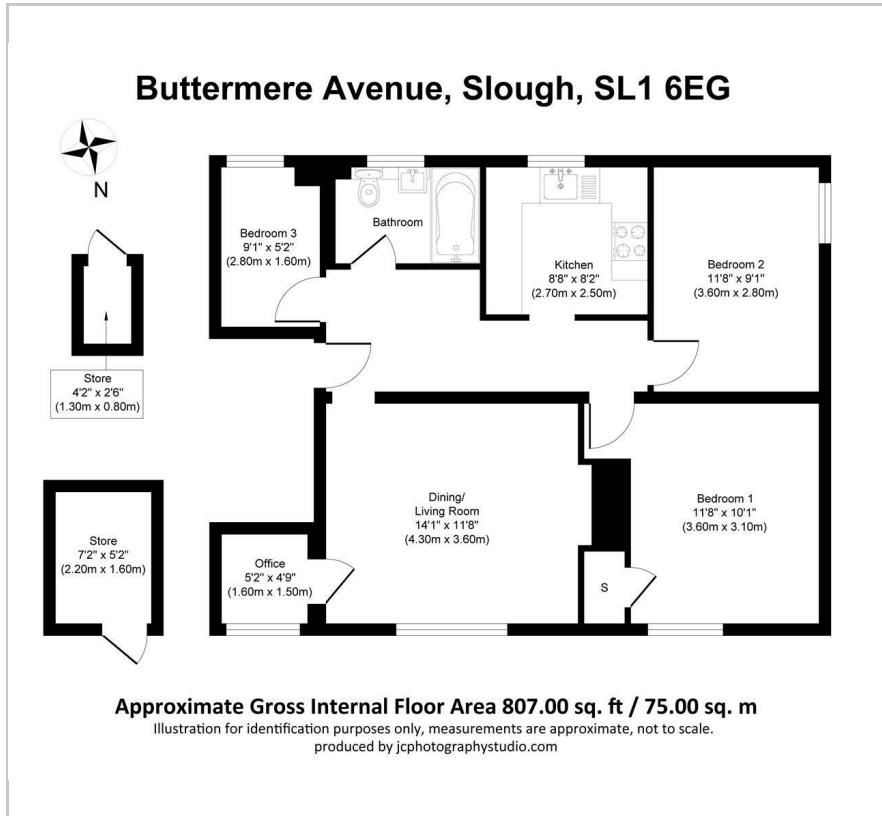
## Buttermere Avenue

, Slough, SL1 6EG

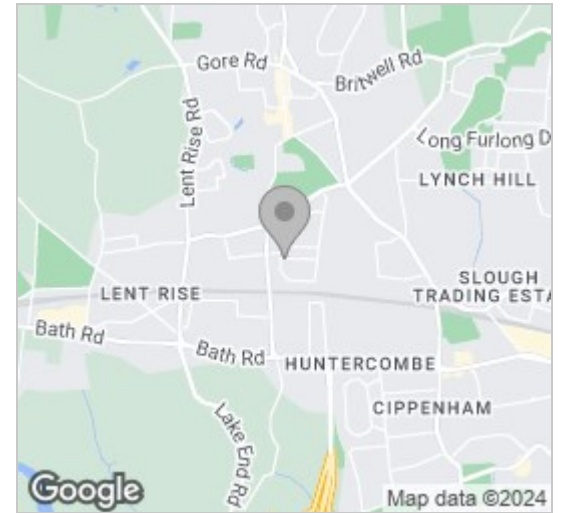
Offers In The Region Of £350,000



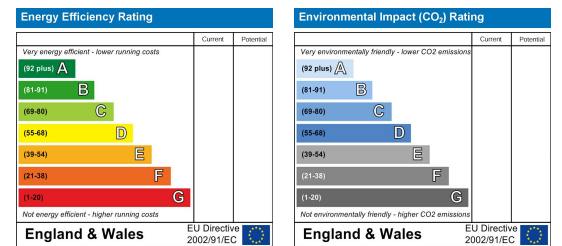
## Floor Plan



## Area Map



## Energy Efficiency Graph



## Viewing

Please contact our Move Inn Iver Office on 01753900950 if you wish to arrange a viewing appointment for this property or require further information.

- Three Bedroom First Floor Apartment
- Spacious Rooms
- Immaculate Condition
- Additional/Study Room
- Gas Central Heating
- Two Spacious Storage Cupboard
- Parking Available
- Communal Area
- Ideal For Investors Or 1st time buyers

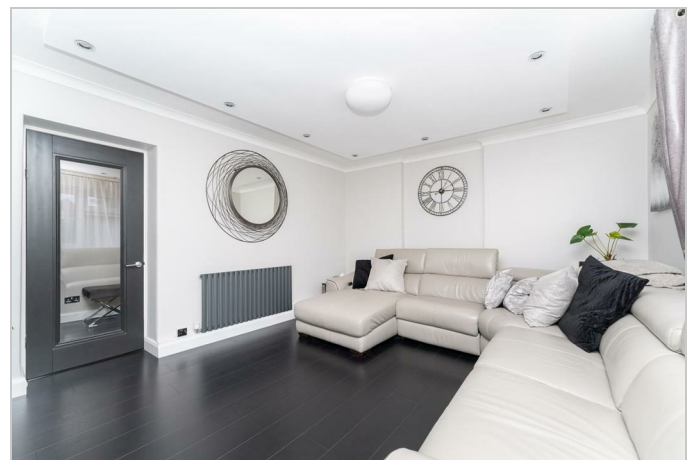
Move Inn Estates is delighted to present this spacious three-bedroom first-floor apartment in Burnham, ideally located near the train station and with easy access to the motorway.

This property is perfect for growing families or investors, as it is in immaculate condition, requiring no work and ready to move into. The apartment comprises two double bedrooms, a single bedroom, and an additional study room, offering versatile living arrangements. It features a separate fitted kitchen, a study area, and a reception room with ample lighting, creating a bright and airy atmosphere. The apartment also includes a family bathroom/WC and boasts gas central heating for year-round comfort.

The location offers unbeatable connectivity, with Burnham & Taplow Station, serving the London Paddington line, just a 5-10 minute walk away. The M4 and M25 motorways are only a 5-minute drive, and Heathrow Airport is easily accessible for those needing to travel further afield.

Additional features of this attractive property include one allocated parking spot, two separate storage cupboards outside the apartment, and access to the surrounding communal gardens. This apartment offers convenience and comfort in a highly desirable location.

Lease - 90 Years remaining.  
 Service Charge - TBC  
 Ground Rent - TBC



These particulars, whilst believed to be accurate are set out as a general outline only for guidance and do not constitute any part of an offer or contract. Intending purchasers should not rely on them as statements of representation of fact, but must satisfy themselves by inspection or otherwise as to their accuracy. No person in this firm's employment has the authority to make or give any representation or warranty in respect of the property.