



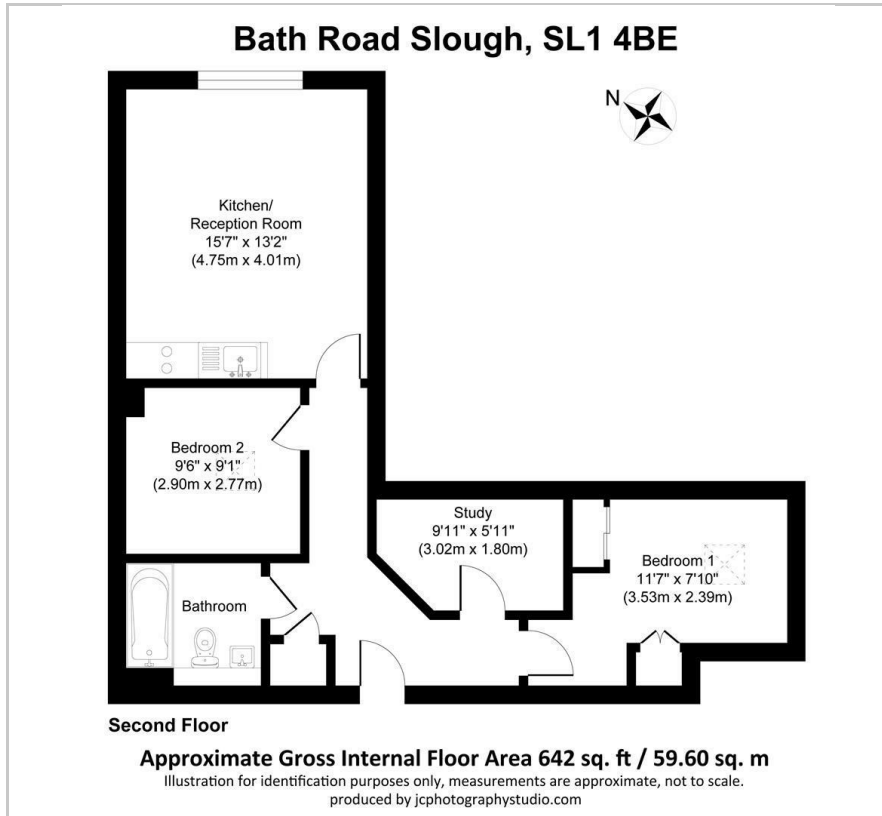
MOVE INN ESTATES
MAKING THE RIGHT MOVE



Bath Road
Slough, SL1 4BE
£350,000



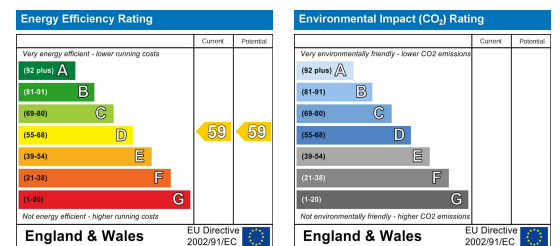
Floor Plan



Area Map



Energy Efficiency Graph



Viewing

Please contact our Move Inn Iver Office on 01753900950 if you wish to arrange a viewing appointment for this property or require further information.

- CLOSE TO ALL ■ GRAMMAR SCHOOL AMENITIES CATCHMENT AREA
- TOP FLOOR APARTMENT ■ AIR CONDITIONING
- SOUGHT AFTER ■ LONG LEASE LOCATION



Move Inn Estates proudly presents, an expertly transformed former office building now offering 120 stylish apartments within close reach of Slough's town centre.

This particular apartment boasts two spacious bedrooms, an additional study/snug room, and a modern family bathroom, perfectly designed for contemporary living.

Key Features:

* Location: Ideally situated in Slough, Atria is just a short distance from the town centre, providing easy access to shopping, dining, and entertainment options.

* Modern Living: The apartment features striking contemporary interiors with hi-tech appliances, making it an ideal choice for first-time buyers, owner-occupiers, and Buy-to-Let investors seeking a property close to the capital.

Interior Details:

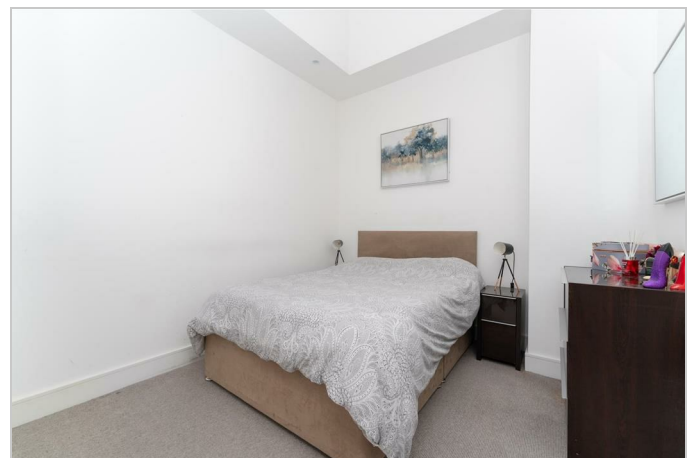
* Bedrooms: Two well-proportioned bedrooms provide ample space and comfort.

* Study/Snug Room: A versatile room that can be used as a study or a cosy snug.

* Bathroom: A modern family bathroom designed with high-quality fixtures and fittings.

Additional Benefits:

* Convenient Access: The location offers excellent transport links, making commuting to Central London quick and easy.



These particulars, whilst believed to be accurate are set out as a general outline only for guidance and do not constitute any part of an offer or contract. Intending purchasers should not rely on them as statements of representation of fact, but must satisfy themselves by inspection or otherwise as to their accuracy. No person in this firm's employment has the authority to make or give any representation or warranty in respect of the property.