



MOVE INN ESTATES
MAKING THE RIGHT MOVE



Maitland Close

, Hounslow, TW4 7DR

Guide Price £515,000



5



4

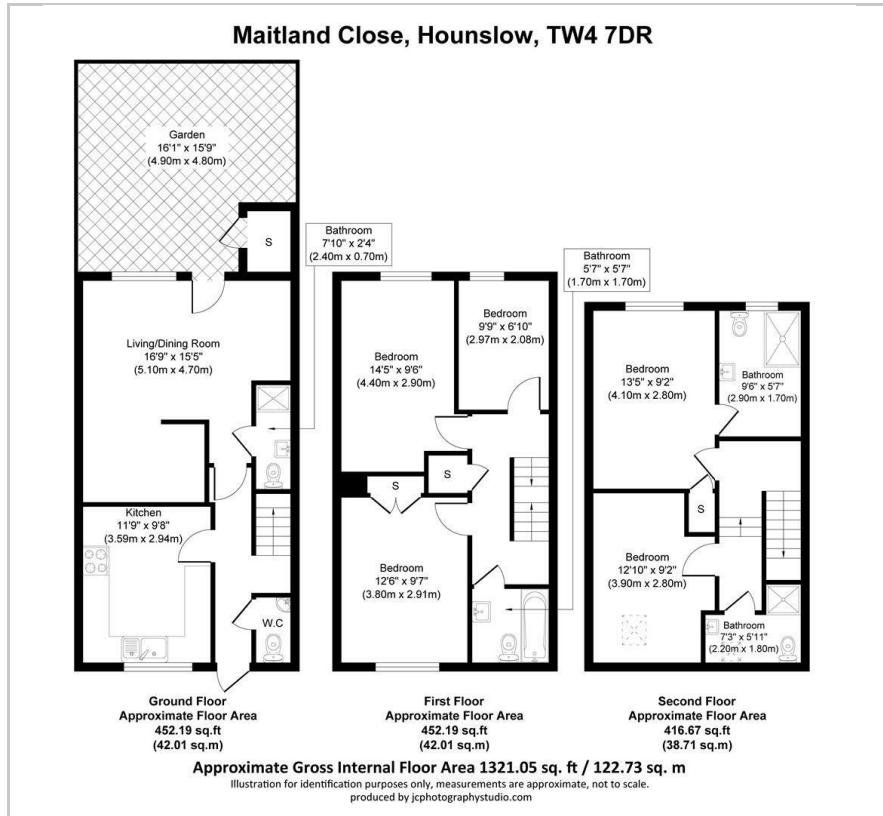


1



C

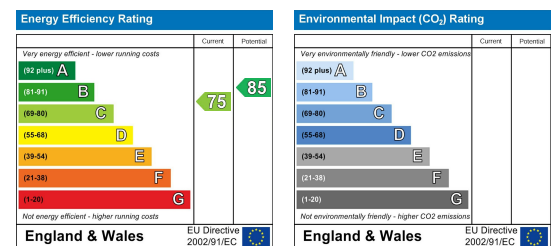
Floor Plan



Area Map



Energy Efficiency Graph



Viewing

Please contact our Move Inn Iver Office on 01753900950 if you wish to arrange a viewing appointment for this property or require further information.

- CHAIN FREE
- INVESTMENT OPPORTUNITY
- CLOSE TO ALL AMENITIES
- GOOD SCHOOL CATCHMENT
- CLOSE PUBLIC TRANSPORT AND MOTORWAY LINKS
- FIVE BEDROOMS
- FOUR BATHROOMS

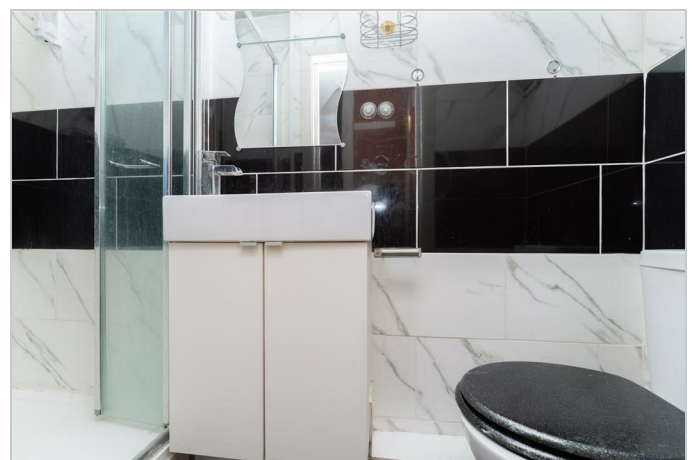
This exceptional mid-terrace property offers a prime opportunity for developers and investors. Boasting five spacious bedrooms and four modern bathrooms, this HMO is perfectly designed to cater to multiple occupants, maximizing rental potential.

The property features a well-equipped kitchen, providing ample space for meal preparation and communal living. Situated in a highly sought-after location, it offers unparalleled convenience:

Close to all local amenities, ensuring tenants have easy access to shops, restaurants, and services. Excellent motorway links, making it ideal for commuters.

Located within a good school catchment area, appealing to families and professionals alike.

This property is a rare find, combining space, convenience, and potential for substantial returns. Don't miss the chance to invest in this versatile and promising HMO.



These particulars, whilst believed to be accurate are set out as a general outline only for guidance and do not constitute any part of an offer or contract. Intending purchasers should not rely on them as statements of representation of fact, but must satisfy themselves by inspection or otherwise as to their accuracy. No person in this firm's employment has the authority to make or give any representation or warranty in respect of the property.