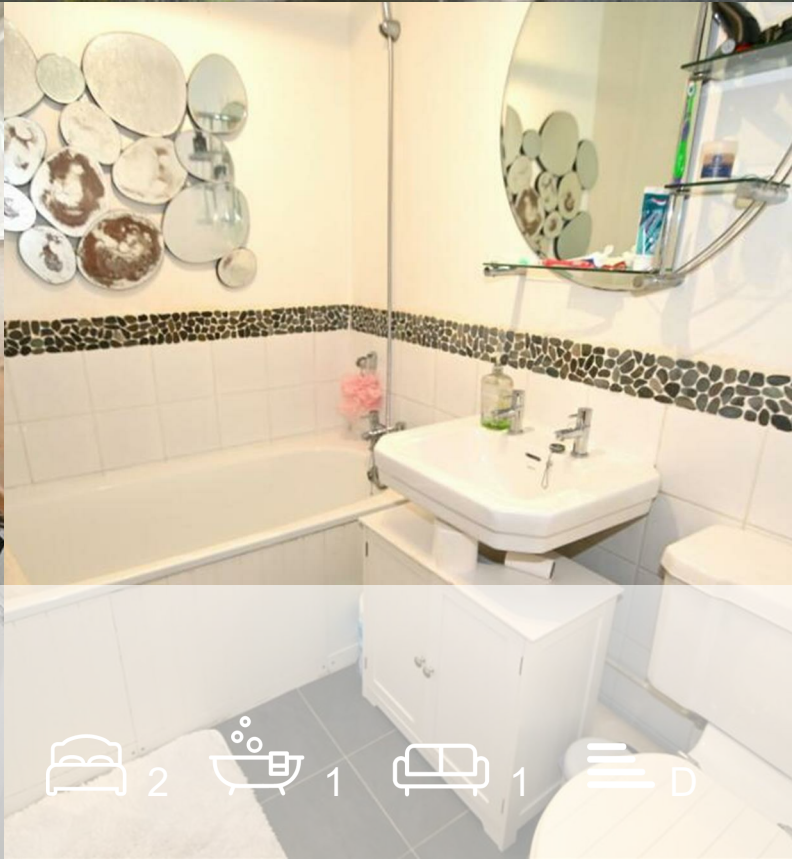




MOVE INN ESTATES

MAKING THE RIGHT MOVE



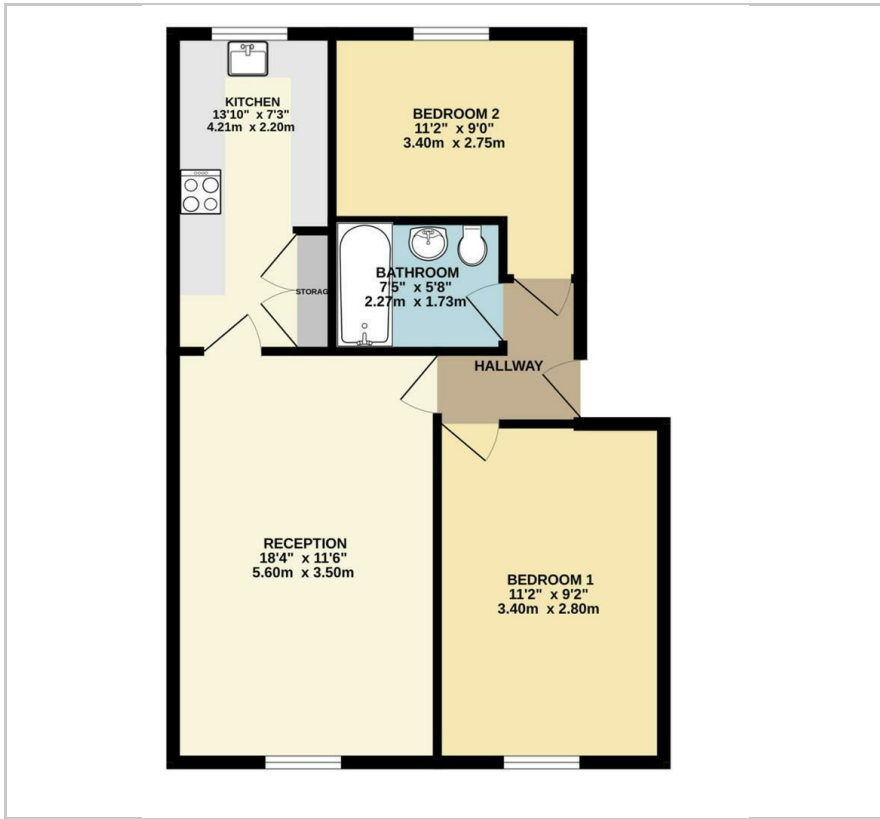
Tithe Court

, Slough, SL3 8AS

Asking Price £275,000



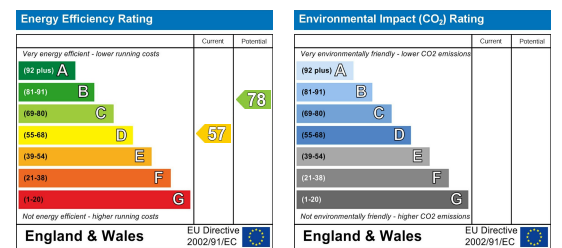
Floor Plan



Area Map



Energy Efficiency Graph



Viewing

Please contact our Move Inn Iver Office on 01753900950 if you wish to arrange a viewing appointment for this property or require further information.



Move Inn Estates present this exceptional, ground floor flat located on Meadfield Road in Slough. This impressive property features two spacious double bedrooms, providing ample space for comfortable living. The rear aspect living/dining room offers a bright and airy atmosphere, perfect for relaxation and entertaining guests along with the kitchen situated aside it.

One of the standout features of this property is the access to a communal garden area, ideal for enjoying outdoor activities and leisure time. Additionally, the flat benefits from having its own garage, offering secure free parking and extra storage space.

Situated in a prime location, this flat is within walking distance to Langley station (Elizabeth line), providing excellent connectivity to central London and other key destinations. The proximity to local shops and travel links ensures convenience and ease of access to everyday amenities.

Don't miss the opportunity to make this larger-than-average ground floor flat your new home. Contact Move Inn Estates today to arrange a viewing and experience the convenience and comfort this property has to offer.



These particulars, whilst believed to be accurate are set out as a general outline only for guidance and do not constitute any part of an offer or contract. Intending purchasers should not rely on them as statements of representation of fact, but must satisfy themselves by inspection or otherwise as to their accuracy. No person in this firm's employment has the authority to make or give any representation or warranty in respect of the property.