



MOVE INN ESTATES
MAKING THE RIGHT MOVE



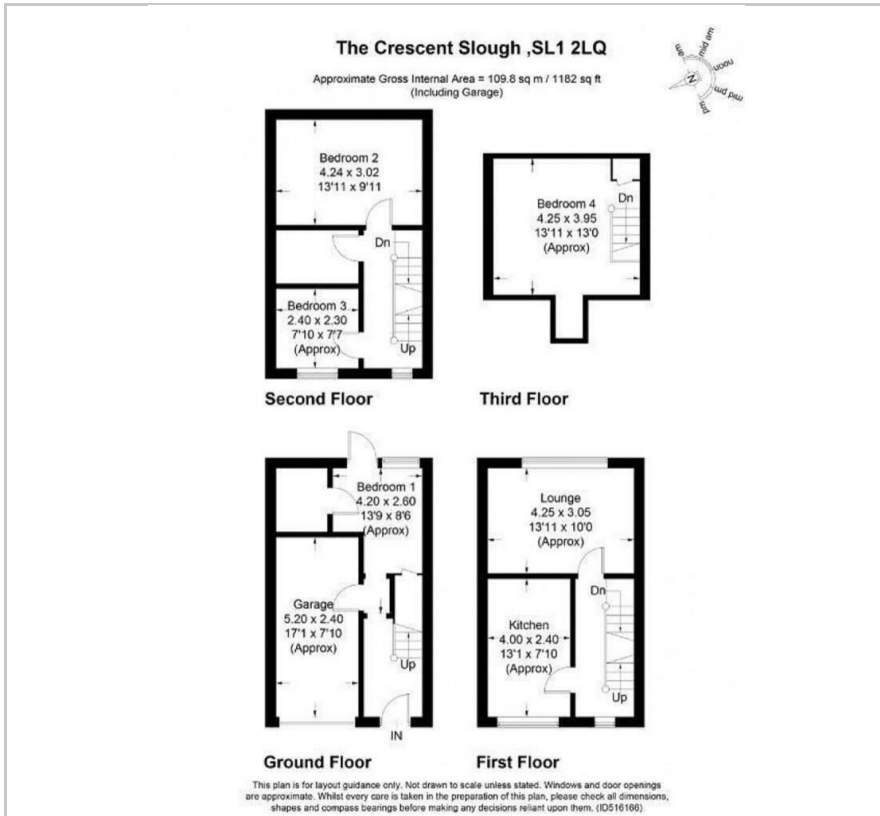
The Crescent

Slough, SL1 2LQ

Asking Price £525,000



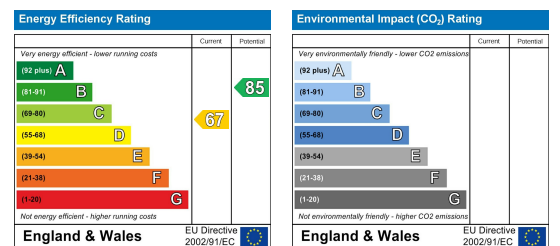
Floor Plan



Area Map



Energy Efficiency Graph



Viewing

Please contact our Move Inn Iver Office on 01753900950 if you wish to arrange a viewing appointment for this property or require further information.

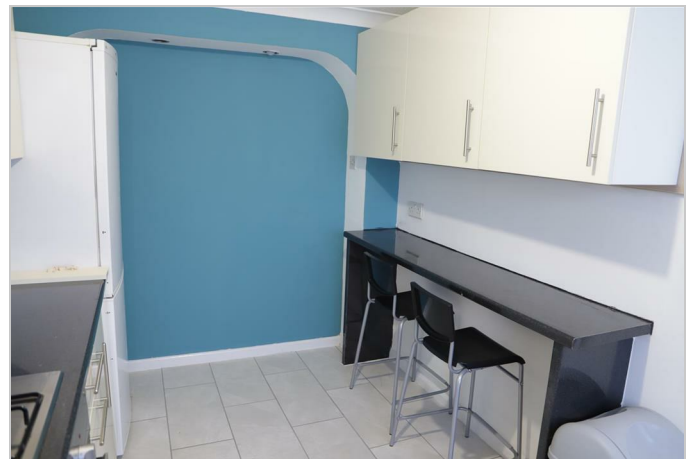
- Five Bedroom HMO
- Garage Conversion
- Chain Free
- Easy Access to Slough Mainline Station
- Ideal for Investors
- Three Bathrooms
- Off Road Parking
- Slough Centre
- Close to the M4/M25
- Close To Amenities

** INVESTMENT OPPORTUNITY**

This fantastic five bedroom HMO townhouse is situated in the heart of Slough, close to local amenities and transport links.

The property is currently returning approximately £3500 pcm in Rent with further Scope to Extend. The property is set within easy reach of Slough centre and Slough station as well as offering easy access to the M4/M25 and nearby Windsor and Eton.

Viewings Highly Advised



These particulars, whilst believed to be accurate are set out as a general outline only for guidance and do not constitute any part of an offer or contract. Intending purchasers should not rely on them as statements of representation of fact, but must satisfy themselves by inspection or otherwise as to their accuracy. No person in this firm's employment has the authority to make or give any representation or warranty in respect of the property.