



**MOVE INN ESTATES**  
MAKING THE RIGHT MOVE

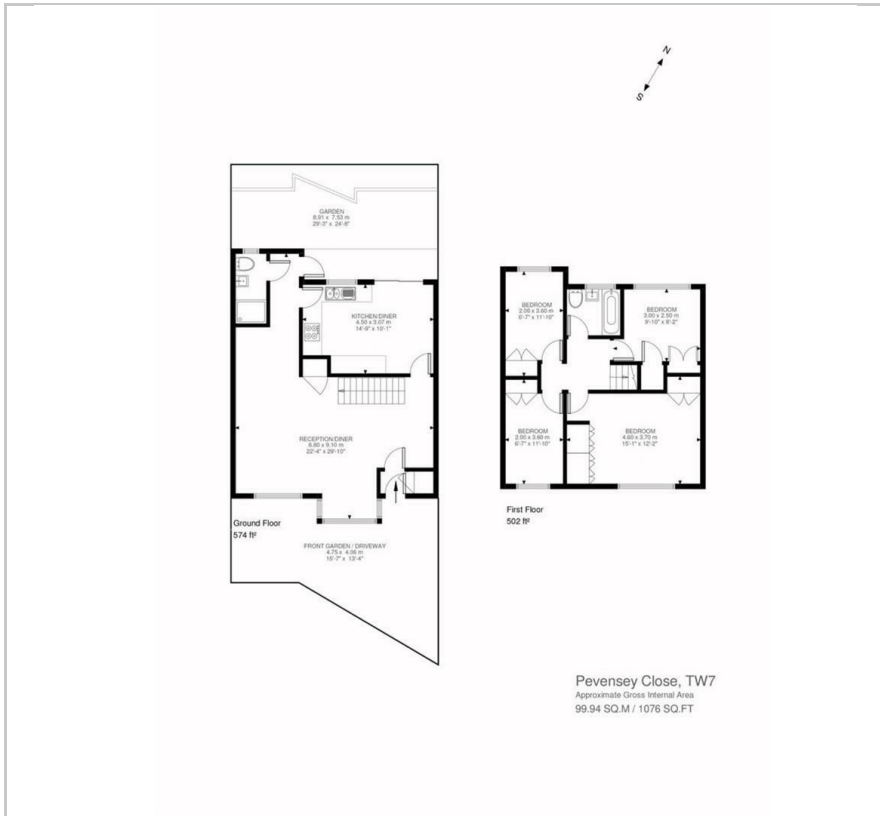


**Pevensey Close**  
, Isleworth, TW7 4QS  
Price Guide £650,000

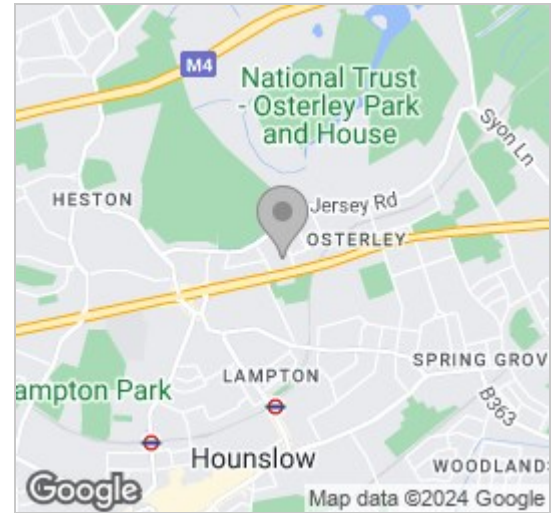




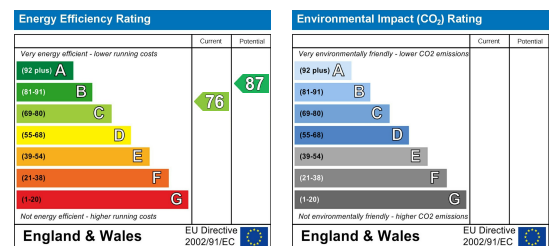
## Floor Plan



## Area Map



## Energy Efficiency Graph



## Viewing

Please contact our Move Inn Iver Office on 01753900950 if you wish to arrange a viewing appointment for this property or require further information.

- Four Bedroom End Of Terrace
- Excellent Condition
- Quiet Cul-De-Sac
- Spacious Living Room
- Two Family Bathrooms
- Three Car Driveway
- Recently Extended To The Side Aspect
- Off Street Parking

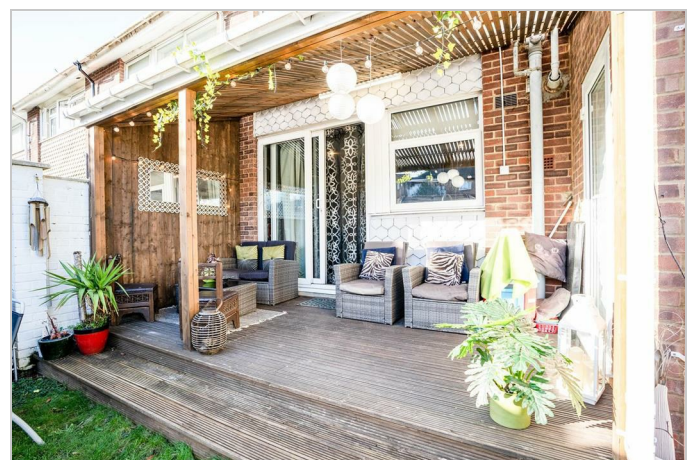
\*\*\* OPENDAY ON SATURDAY 27TH APRIL - APPOINTMENT ONLY\*\*\*

Move Inn Estates showcase this recently renovated, end-of-terrace gem tucked away in a peaceful cul-de-sac near Osterley tube station and the beautiful Osterley Park. This four-bedroom family home has been tastefully extended to offer spacious and stylish living. The property is enhanced by loft space, gas central heating, and double glazing throughout.

Inside, you'll find a well-designed layout with a large wrap around reception/dining room, a downstairs shower room, and a modern newly fitted kitchen. The kitchen opens onto a lovely decking area and a spacious rear garden, perfect for outdoor relaxation.

Upstairs, the master bedroom features built-in wardrobes, while three more bedrooms offer ample space and storage. A contemporary family bathroom completes the upper floor. With plenty of storage, loft access, and allocated parking, this home has everything you need.

Outside, there's a driveway for parking and a sizable garden for outdoor enjoyment. The location is superb, offering a quiet retreat while being close to transport links to Osterley Station and the scenic Osterley Park.



These particulars, whilst believed to be accurate are set out as a general outline only for guidance and do not constitute any part of an offer or contract. Intending purchasers should not rely on them as statements of representation of fact, but must satisfy themselves by inspection or otherwise as to their accuracy. No person in this firm's employment has the authority to make or give any representation or warranty in respect of the property.