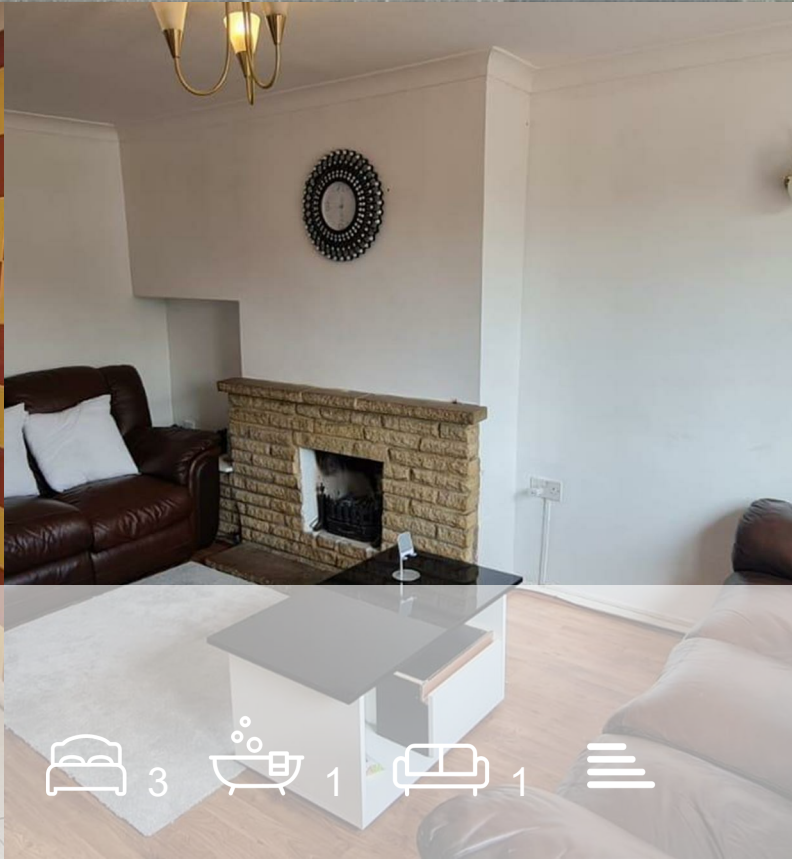




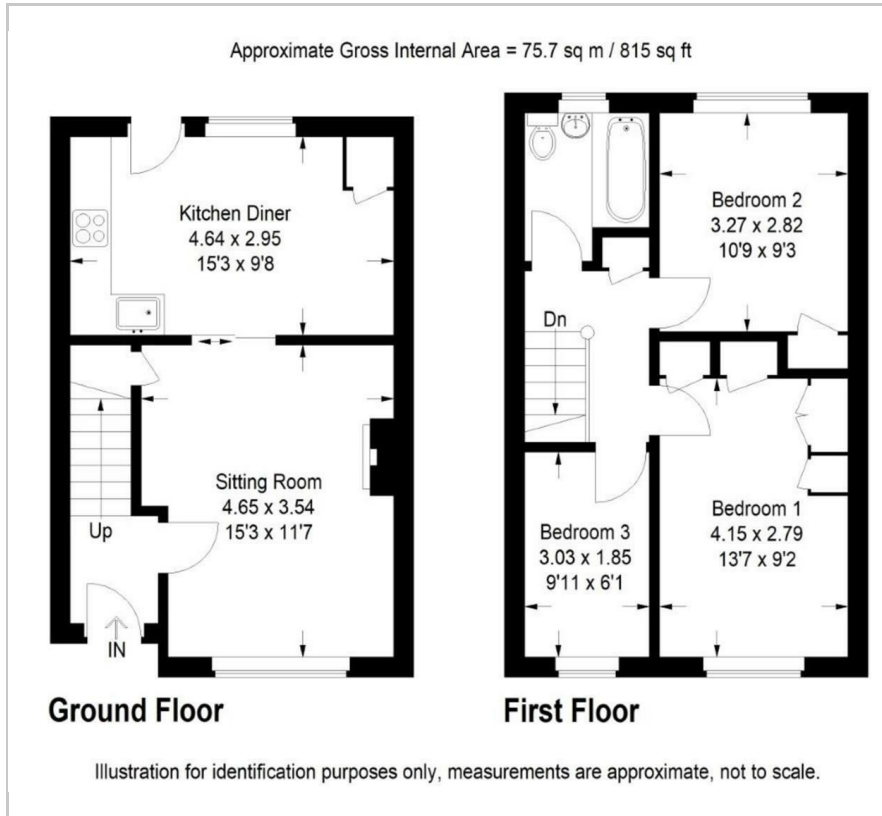
**MOVE INN ESTATES**  
MAKING THE RIGHT MOVE



**Cippenham Lane**  
, Slough, SL1 5BN  
Offers Over £430,000



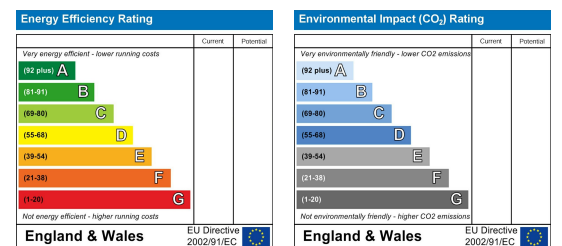
## Floor Plan



## Area Map



## Energy Efficiency Graph



## Viewing

Please contact our Move Inn Iver Office on 01753900950 if you wish to arrange a viewing appointment for this property or require further information.

- WELL PRESENTED THREE BEDROOM FAMILY HOME
- POTENTIAL TO EXTEND BEDROOM FAMILY HOME
- DRIVEWAY PARKING FOR UP TO 4 CARS
- CIPPENHAM VILLAGE LOCATION
- CATCHMENT AREA OF POPULAR SCHOOLS

Move Inn Estates presents this Mid-Terrace three bedroom family home located on one of the most sought after roads in Cippenham Village. Key features include a living room, a modern kitchen/diner, three first floor bedrooms, a family bathroom suite, loft storage space (offering huge potential for extension/conversion), a private rear garden, driveway parking for up to 4 cars.

Viewings Are Highly Recommended!



These particulars, whilst believed to be accurate are set out as a general outline only for guidance and do not constitute any part of an offer or contract. Intending purchasers should not rely on them as statements of representation of fact, but must satisfy themselves by inspection or otherwise as to their accuracy. No person in this firm's employment has the authority to make or give any representation or warranty in respect of the property.