



MOVE INN ESTATES

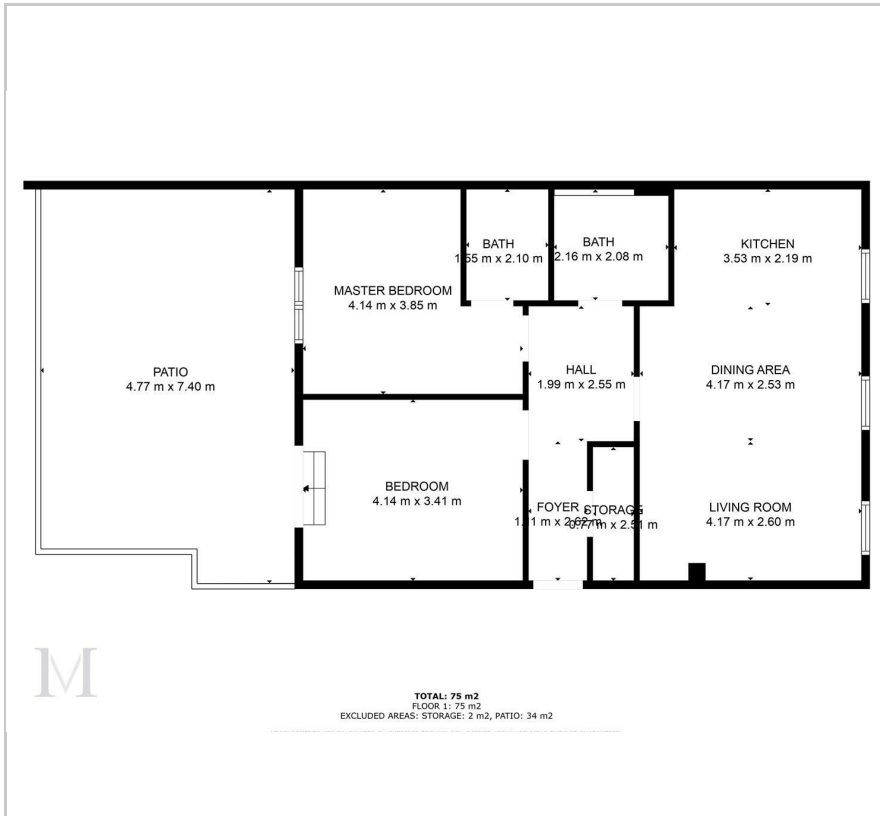
MAKING THE RIGHT MOVE



High Street
Slough, SL1 1HE
Price Guide £340,000



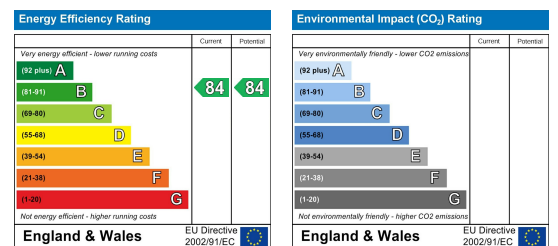
Floor Plan



Area Map



Energy Efficiency Graph



Viewing

Please contact our Move Inn Iver Office on 01753900950 if you wish to arrange a viewing appointment for this property or require further information.

- Lift Access
- Leasehold 997 Years
- Video Entry Phone System
- One Car Parking Space
- Ideal Location
- Close To Elizebeth Line
- Private Balcony



Located in the bustling heart of Slough Town Centre, Radley House presents an enticing opportunity for investment with its collection of 24 apartments boasting one, two, and three bedrooms. As part of Slough's ambitious £1 billion plus Regeneration scheme, now is an opportune moment to consider this development.

These apartments offer generous living spaces, characterized by larger than average rooms. They are designed to cater to modern lifestyles, featuring high-efficiency gas heating, integrated kitchen appliances, steel baths, porcelain tiles, built-in wardrobes, and designer fittings and accessories.

Slough Town Centre is currently undergoing a significant transformation, with plans in place to create iconic buildings, expansive open spaces, and improve local schools. The redevelopment initiative also includes the introduction of high-quality new homes, a revitalization of shopping centers, and the addition of extensive leisure facilities.

The imminent arrival of Crossrail is set to revolutionize connectivity, offering swift access to the City of London in just over half an hour and Paddington in a mere 17 minutes via the fast train. Additionally, another new rail link will provide direct access to Heathrow Airport in a remarkably short six-minute journey.

Investing in Radley House presents not only an opportunity to acquire a property in a burgeoning locale but also promises significant potential for future growth and convenience in transportation and amenities.



These particulars, whilst believed to be accurate are set out as a general outline only for guidance and do not constitute any part of an offer or contract. Intending purchasers should not rely on them as statements of representation of fact, but must satisfy themselves by inspection or otherwise as to their accuracy. No person in this firm's employment has the authority to make or give any representation or warranty in respect of the property.