



MOVE INN ESTATES

MAKING THE RIGHT MOVE



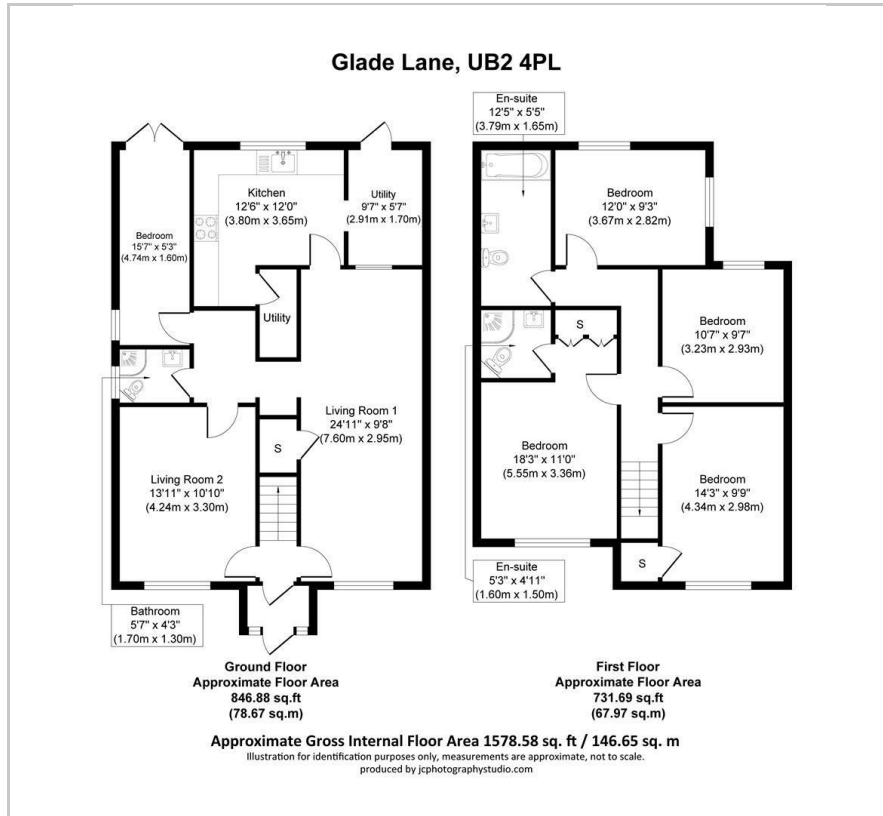
Glade Lane

, Southall, UB2 4PL

Price Guide £690,000



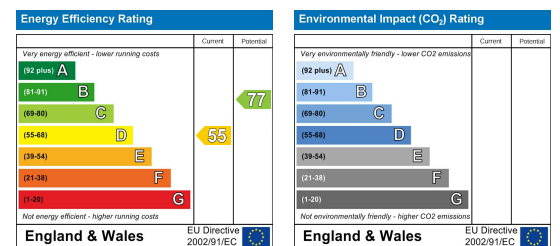
Floor Plan



Area Map



Energy Efficiency Graph



Viewing

Please contact our Move Inn Iver Office on 01753900950 if you wish to arrange a viewing appointment for this property or require further information.

- Double-Fronted Semi Detached Family
- 4 Double Bedrooms (En-Suite to Master)
- Through Reception Rooms
- Stylish Kitchen/Breakfast Room
- Family Bathroom & D'stairs Shower
- Generous Rear Garden Room
- Off Street Parking for Multiple Vehicles
- Good schools
- Transport Links
- Newly renovated with new boiler and radiators



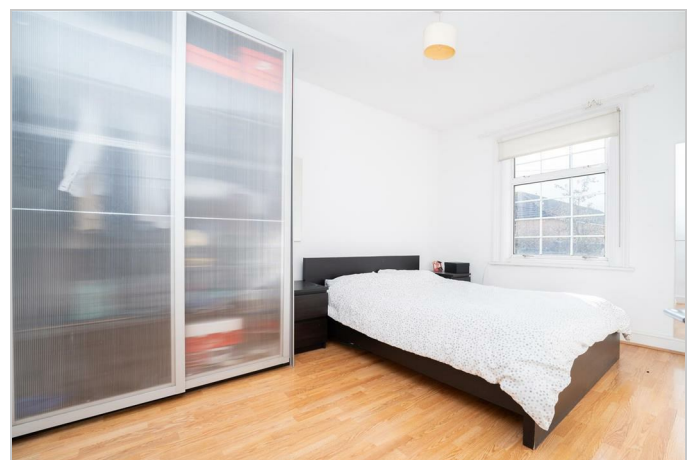
Located just a stone's throw away from scenic canal-side walks in Norwood Green, Move Inn Estates proudly presents this spacious semi-detached period family home for sale. The property has been extensively extended and improved by the current owners, offering generous family living accommodation that must be seen to be fully appreciated! Key features include interconnected reception rooms, a separate third reception room, a stylish kitchen/breakfast room with pantry and utility area. Upstairs, there are four double bedrooms, including an en-suite shower room for the master bedroom, along with a generously sized family bathroom. The property also boasts a delightful rear garden, a study/office alternatively could be served as a fifth bedroom, a convenient downstairs shower room and WC, as well as off-street parking for multiple vehicles at the front.

Enjoy efficient heating throughout the home with the installation of a brand-new boiler. Each room has new radiators, providing consistent heating. In addition to this, the property has plush new carpeting throughout the living and bedroom spaces. The bathroom has been renovated with pristine tiling and modern fixtures.

With major upgrades already completed, this property offers the convenience of move-in ready home, saving time and hassle for the new owners.

The property benefits from numerous good schools, transport links and local amenities nearby.

Nestled in this picturesque location near the Grand Union Canal and the charming Glade Lane Canal-side



These particulars, whilst believed to be accurate are set out as a general outline only for guidance and do not constitute any part of an offer or contract. Intending purchasers should not rely on them as statements of representation of fact, but must satisfy themselves by inspection or otherwise as to their accuracy. No person in this firm's employment has the authority to make or give any representation or warranty in respect of the property.