



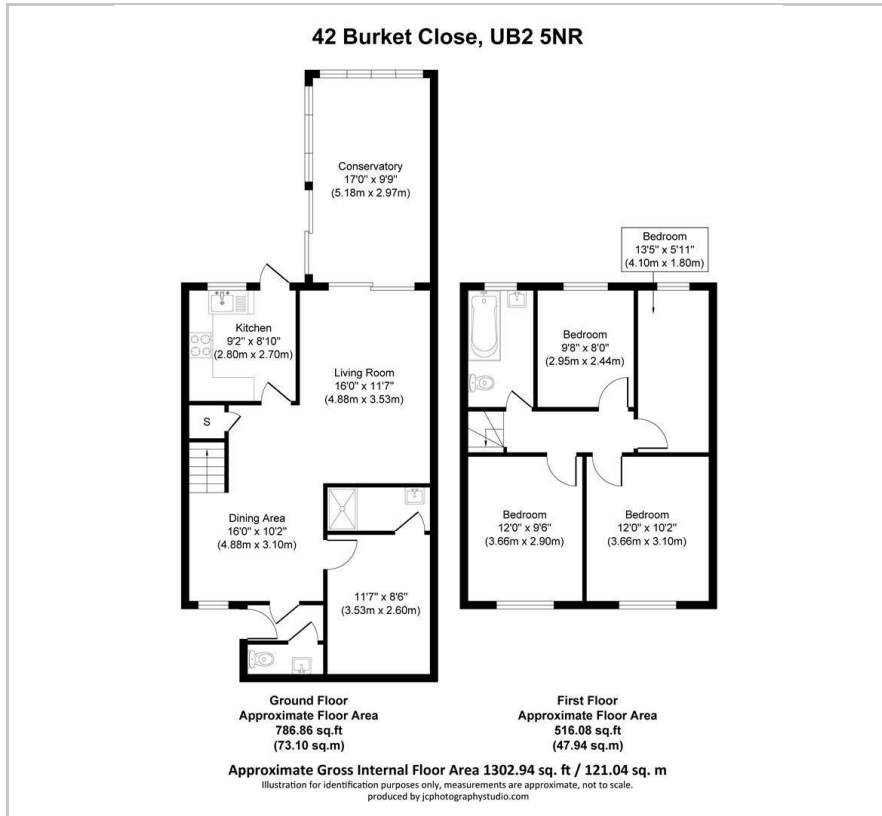
**MOVE INN ESTATES**  
MAKING THE RIGHT MOVE



**Burket Close**  
Southall, UB2 5NR  
Asking Price £649,950



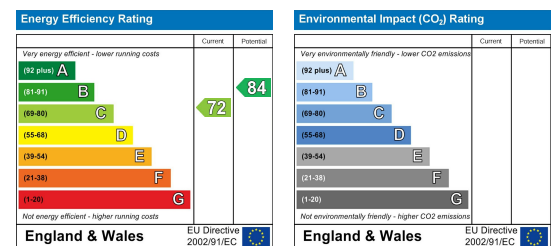
## Floor Plan



## Area Map



## Energy Efficiency Graph



## Viewing

Please contact our Move Inn Iver Office on 01753900950 if you wish to arrange a viewing appointment for this property or require further information.

- 5 Bedroom Semi-Detached Family Home
- Double Glazed Windows
- Central Heating
- Approved Disabled Bedroom Downstairs With En-Suite
- Rear Garden and off street parking
- Off Street Parking
- Ideal Quiet Location

Move Inn Estates present this spacious four/five-bedroom extended Semi-Detached family home in a sought-after residential area. The ground floor offers a lounge, versatile reception, bedroom five which is an approved disabled room with En-Suite, dining room, kitchen, and a convenient shower room. On the first floor, discover four well-appointed bedrooms and a family bathroom. Outside, a rear garden features two wooden sheds and extend glass conservatory. While the front boasts a private driveway with off-street parking for two cars. This property is an ideal choice for a growing family seeking comfort and practicality in a desirable neighborhood.



These particulars, whilst believed to be accurate are set out as a general outline only for guidance and do not constitute any part of an offer or contract. Intending purchasers should not rely on them as statements of representation of fact, but must satisfy themselves by inspection or otherwise as to their accuracy. No person in this firm's employment has the authority to make or give any representation or warranty in respect of the property.