



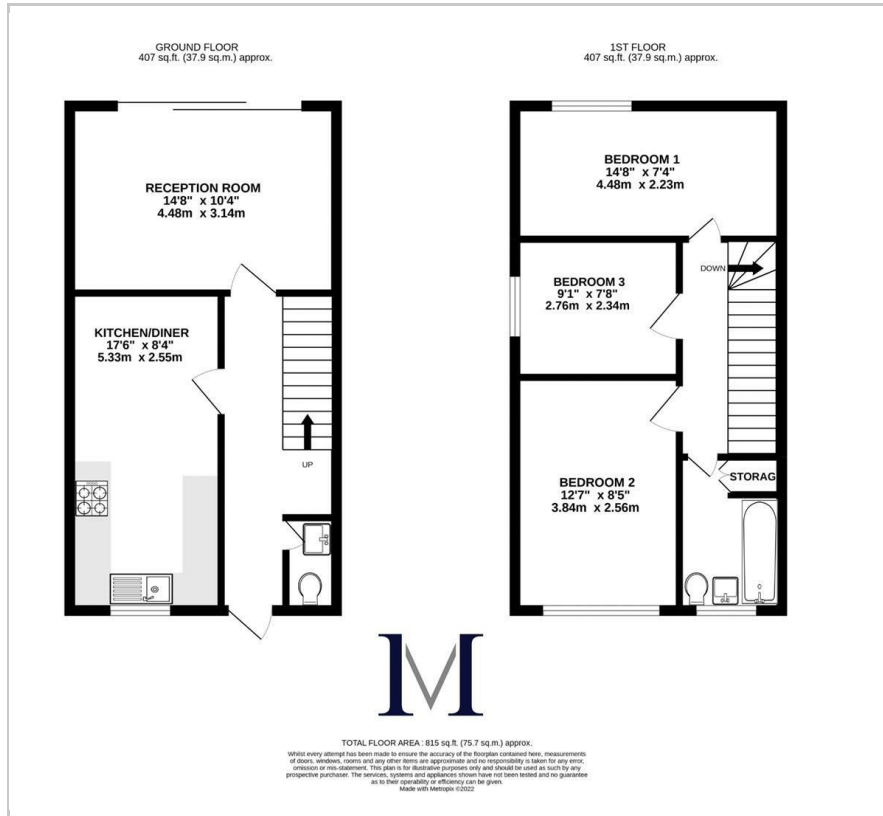
MOVE INN ESTATES
MAKING THE RIGHT MOVE



Greatfields Drive
Hillingdon, UB8 3QN
Price Guide £450,000



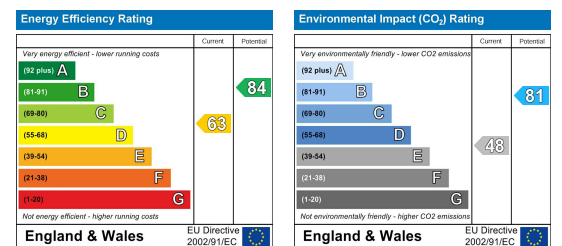
Floor Plan



Area Map



Energy Efficiency Graph



Viewing

Please contact our Move Inn Iver Office on 01753900950 if you wish to arrange a viewing appointment for this property or require further information.

- Three bedroom
 - On-street parking
 - Potential for rear extension
 - End terrace
 - Private Rear Garden
 - Chain free!
- STP

CHAIN FREE!* Move Inn Estates bring to the market, this spacious three bedroom end-terrace family house located within reach of Hillingdon Hospital and other local amenities.

The property comprises of; a large fully fitted kitchen, spacious living area, ground floor w/c, three double bedrooms and a family bathroom suite. Further benefits from a private rear garden with secure access from the back, on-street parking, double glazing and gas central heating are also included. The property also offers potential to extend (STPP).

Situated within great proximity to local amenities, including shops & supermarkets and also great for those who are employed or may study at the local facilities such as Brunel University & Hillingdon Hospital with public transport taking you directly to its doorstep.

Viewings advised.



These particulars, whilst believed to be accurate are set out as a general outline only for guidance and do not constitute any part of an offer or contract. Intending purchasers should not rely on them as statements of representation of fact, but must satisfy themselves by inspection or otherwise as to their accuracy. No person in this firm's employment has the authority to make or give any representation or warranty in respect of the property.