



16 George Wright Close, Eastleigh, SO50 5SJ

£180,000



** OFFERS OVER **

Ideal as a First time buy and located in George Wright Close I am delighted to present this spacious two double bedroom ground floor apartment!

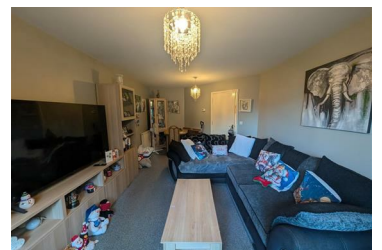
Internally the property comprises of entrance hallway, master bedroom with en suite at the front, kitchen, bathroom, a further double bedroom at the rear and lounge/dining room with patio doors leading to the enclosed private patio area overlooking the communal gardens

With allocated parking and chain complete I would recommend you book your viewing as soon as possible!

WHATSAPP ME ANYTIME TO BOOK YOUR VIEWING! I look forward to hearing from you!

Luci Morgan

- MODERN TWO DOUBLE BEDROOM GROUND FLOOR APARTMENT
- KITCHEN
- MASTER BEDROOM WITH EN SUITE
- LOCATED AT THE REAR OF THE BUILDING
- SELLER HAS FOUND AND CHAIN COMPLETE
- LOUNGE/DINING ROOM
- FAMILY BATHROOM
- PRIVATE PATIO AREA
- ALLOCATED PARKING
- WHATSAPP NOW TO BOOK YOUR VIEWING



Riverbank House 65a Bishopstoke Road, Eastleigh, Hampshire, SO50 6BF

Tel: 07841976860 Email: luci@lucimorganestateagency.com <https://www.lucimorganestateagency.com>