



1A Newtown Road, Eastleigh, SO50 9DA

Offers in excess of £160,000



Located in central Eastleigh I am delighted to present this spacious two double bedroom split level FREEHOLD apartment.

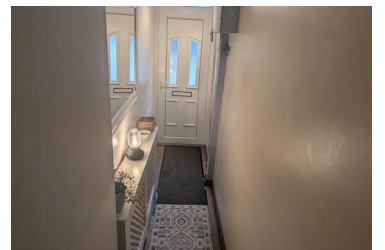
Tastefully decorated throughout and in good condition the property comprises of entrance hallway with stairs to the first floor, second bedroom at the rear, bathroom, kitchen and lounge at the front.

The stairs on the landing leads up to the master bedroom on the top floor!

Outside the property benefits from its own front garden and share of the rear garden along with parking at the rear OFFERED WITH A NO FORWARD CHAIN I WOULD RECOMMEND YOU BOOK YOUR VIEWING AS SOON AS POSSIBLE TO AVOID DISAPPOINTMENT!!

** EPC AND FLOOR PLAN TO FOLLOW **

- FREEHOLD TWO DOUBLE BEDROOM FIRST FLOOR ▪ LOUNGE
- SPLIT LEVEL CONVERSION IN CENTRAL EASTLEIGH!
- KITCHEN
- BATHROOM
- SECOND BEDROOM ON FIRST FLOOR
- MASTER BEDROOM ON TOP FLOOR
- FRONT GARDEN
- SHARED REAR GARDEN
- PARKING AT THR REAR
- NO FORWARD CHAIN



Riverbank House 65a Bishopstoke Road, Eastleigh, Hampshire, SO50 6BF

Tel: 07841976860 Email: luci@lucimorganestateagency.com <https://www.lucimorganestateagency.com>