



## 31 Brading Close, Southampton, SO16 3DS

**Offers over £225,000**



Located at the end of a cul de sac I am delighted to present this spacious and recently updated three bedroom end of terrace home!

Ideal as a first time buy the property comprises of entrance porch, lounge, kitchen and dining room over looking to rear garden

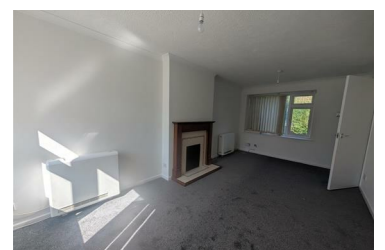
Upon the first floor there are two double bedrooms a further single, bathroom and separate toilet

Outside there is an enclosed rear garden and driveway parking for one car

Offered with a no forward chain I would recommend you book your viewing as soon as possible to avoid disappointment!

**\*\* WHATSAPP/CALL ANYTIME TO BOOK YOUR VIEWING \*\***

- NEWLY DECORATED THREE BEDROOM END OF TERRACE HOME IN BRADING CLOSE
- KITCHEN
- BATHROOM
- ENCLOSED REAR GARDEN
- IDEAL FIRST TIME BUY
- LOUNGE
- DINING AREA
- SEPARATE WC
- PARKING AT THE FRONT
- NO FORWARD CHAIN



Riverbank House 65a Bishopstoke Road, Eastleigh, Hampshire, SO50 6BF

Tel: 07841976860 Email: [luci@lucimorganestateagency.com](mailto:luci@lucimorganestateagency.com) <https://www.lucimorganestateagency.com>