



24 Rogers Road, Bishopstoke, SO50 6EA

Offers in excess of £375,000



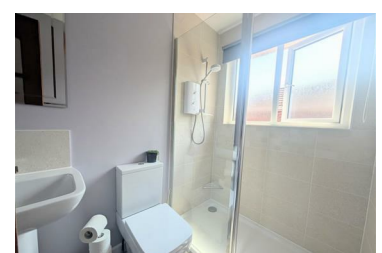
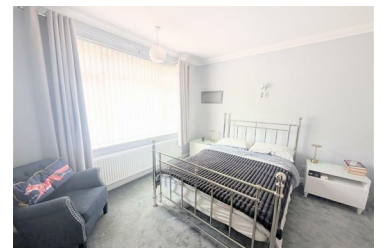
Located in Rogers Road Old Bishopstoke I am delighted to present this extended three bedroom semi detached bungalow!

Rarely available the property comprises of entrance hallway, master bedroom at the front, shower room a further two bedrooms kitchen, utility area and an open plan lounge/dining room at the rear with patio doors opening up to the raised decked area over looking the attractive rear garden.

Externally the rear garden is mainly laid to lawn with pretty shrub/flower borders and direct access to both the garden office, garage and driveway parking for several vehicles

These bungalows are do not come available often so please feel free to call/whatsapp me anytime to book your viewing for the up and coming OPEN

- EXTENDED THREE BEDROOM SEMI DETACHED BUNGALOW IN OLD BISHOPSTOKE
- KITCHEN
- FAMILY BATHROOM
- GARAGE
- GARAGE AND DRIVEWAY PARKING FOR SEVERAL CARS
- LARGE OPEN PLAN LOUNGE/DINING ROOM
- UTILITY AREA
- ATTRACTIVE REAR GARDEN
- SEPARATE GARDEN OFFICE
- ** NO FORWARD CHAIN ** OPEN DAY SATURDAY 7TH OF JUNE **



Riverbank House 65a Bishopstoke Road, Eastleigh, Hampshire, SO50 6BF

Tel: 07841976860 Email: luci@lucimorganestateagency.com <https://www.lucimorganestateagency.com>