



4 Bryony Gardens, Horton Heath, SO50 7PT

Guide price £425,000



Located in a quiet cul de sac in Bryony Gardens I am delighted to present this four bedroom detached family home

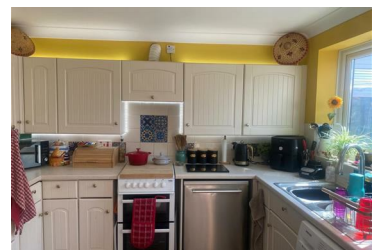
Internally the property comprises of entrance hallway, lounge, kitchen/dining room at the rear and conservatory overlooking the garden

Upon the first floor there you will find master bedroom with en suite at the front, a further three bedrooms and family bathroom

Outside you will find the rear garden is mainly laid to lawn,

With garage and driveway parking for two cars this property will not be available long so please feel free to whatsapp/call me anytime to book your

- FOUR BEDROOM DETACHED HOME
- KITCHEN/DINING ROOM
- MASTER BEDROOM WITH EN SUITE POTENTIAL
- ENCLOSED REAR GARDEN
- POPULAR LOCATION
- LOUNGE
- CONSERVATORY
- FAMILY BATHROOM
- GARAGE AND DRIVEWAY PARKING FOR TWO CARS
- OFFERED WITH A NO FORWARD CHAIN



Riverbank House 65a Bishopstoke Road, Eastleigh, Hampshire, SO50 6BF

Tel: 07841976860 Email: luci@lucimorganestateagency.com <https://www.lucimorganestateagency.com>