



6 White Road

, Bishopstoke, SO50 6ER

Offers in excess of £400,000



RARELY AVAILABLE I am delighted to present this truly immaculate three bedroom semi-detached home in White Road OLD BISHOPSTOKE!!

The property is comprised of :

Entrance Hall with understairs cupboard

Kitchen / Dining Room 14' 4" x 10' (4.37m x 3.05m)

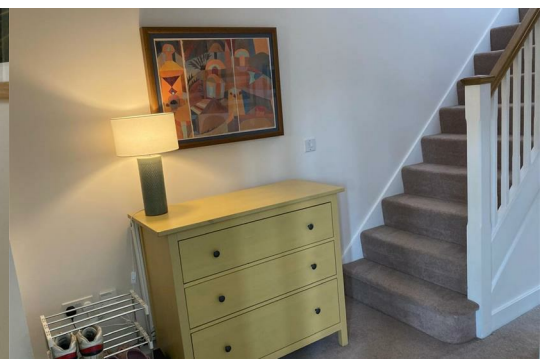
Modern fitted kitchen with a one and a half bowl sink unit with cupboard below, further wide range of modern matching wall and base level cupboards with worktop over, built in oven & hob, fridge/freezer and dishwasher

Lounge 16' 4" x 11' 3" (4.98m x 3.43m)

Double glazed windows and French doors opening to the rear garden

Utility 6' 2" x 6' 1" (1.88m x 1.85m)

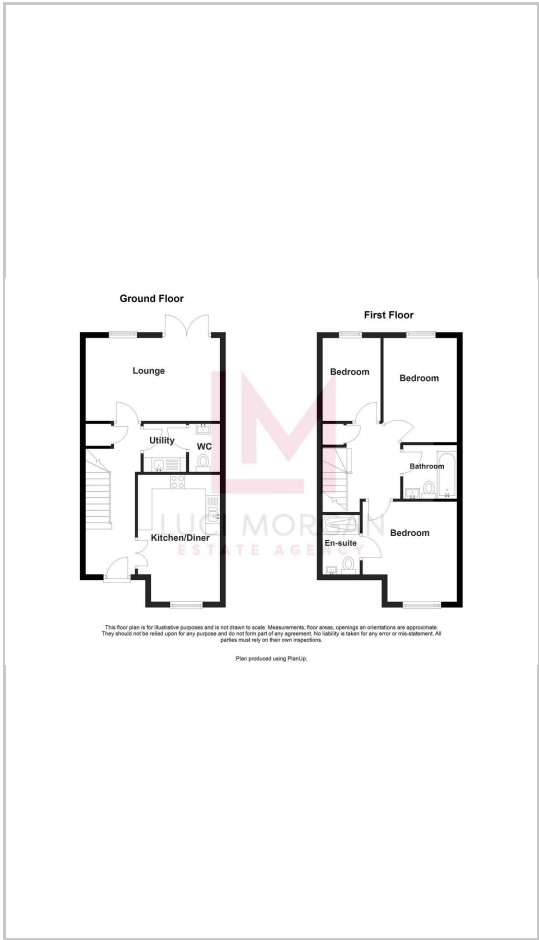
Single drainer sink unit with cupboards below, built in washing machine, coat rail



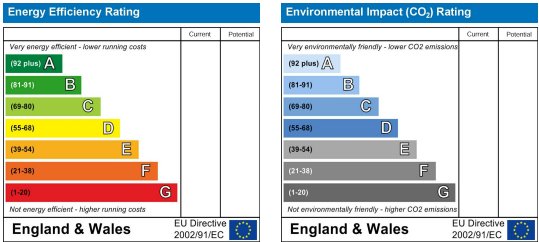
Area Map



Floor Plans



Energy Efficiency Graph



These particulars, whilst believed to be accurate are set out as a general outline only for guidance and do not constitute any part of an offer or contract. Intending purchasers should not rely on them as statements of representation of fact, but must satisfy themselves by inspection or otherwise as to their accuracy. No person in this firms employment has the authority to make or give any representation or warranty in respect of the property.