



## ALLSOP PLACE

MARYLEBONE, NW1

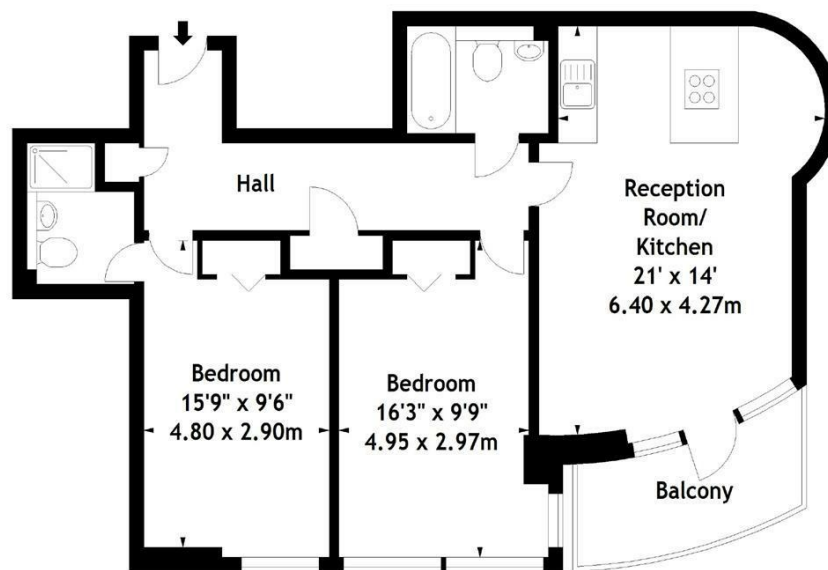
£900 PER WEEK

Wonderful, newly refurbished 2 bed apartment situated in Cornwall House, a portered modern building with lift located on Allsop Place. The apartment boasts open plan reception room leading out to a balcony with fully fitted kitchen and breakfast bar area, 2 double bedrooms (one with en-suite) and family bathroom suite.

Allsop Place is ideally located behind the famous Madame Tussaud's which is only a minutes walk to Baker Street, Baker Street Tube Station (Jubilee Line) and surrounding amenities. Available now and viewings are highly recommended.

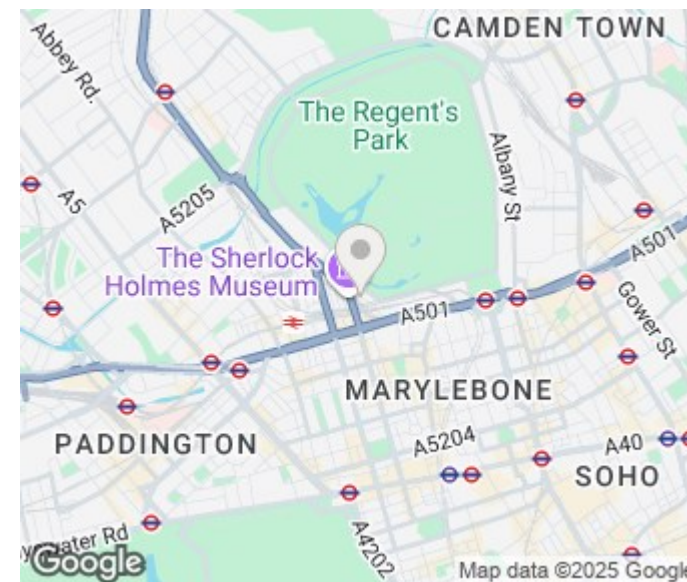
**PMP** | INTERNATIONAL

Cornwall House,  
Allsop Place, NW1  
Approx. Gross Internal Area  
806 Sq Ft - 74.88 Sq M



Third Floor

Measured in accordance with RICS guidelines. Every attempt is made to ensure accuracy, however all measurements are approximate. This floor plan is for illustrative purposes only and is not to scale.  
© Datagraphy Ltd 2017  
Photographs \* Floorplans \* Virtual Tours  
Tel: 0845 643 4401 [www.datagraphy.com](http://www.datagraphy.com)



Energy Efficiency Rating		
	Current	Potential
Very energy efficient - lower running costs		
(92 plus) <b>A</b>		
(81-91) <b>B</b>		
(69-80) <b>C</b>		
(55-68) <b>D</b>		
(39-54) <b>E</b>		
(21-38) <b>F</b>		
(1-20) <b>G</b>	<b>1</b>	<b>1</b>
Not energy efficient - higher running costs		
England & Wales		
	EU Directive 2002/91/EC	

Agents Note: Whilst every care has been taken to prepare these particulars, they are for guidance purposes only. All measurements are approximate and are for general guidance purposes only and whilst every care has been taken to ensure their accuracy, they should not be relied upon and potential buyers/tenants are advised to recheck the measurements

London  
PMP International  
94 Belsize Lane  
Belsize Park  
London  
NW3 5BE

020 7701 2878  
[info@pmpi.co.uk](mailto:info@pmpi.co.uk)  
[www.pmpi.co.uk](http://www.pmpi.co.uk)

**PMP** | INTERNATIONAL