



FELLOWS ROAD LONDON

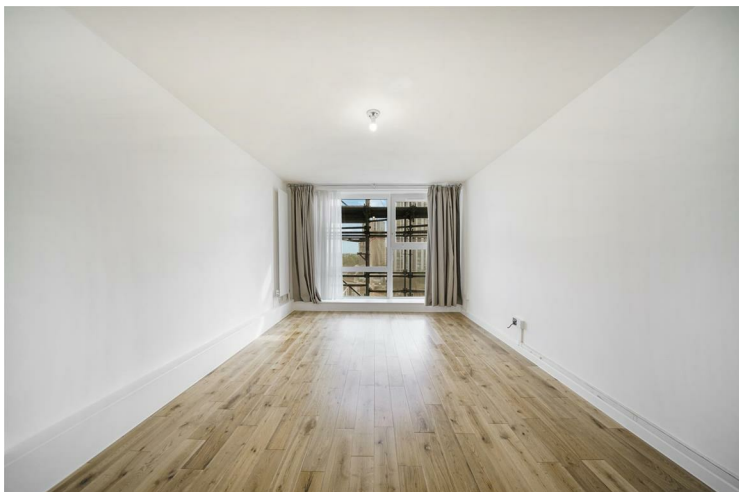
£455,000
LEASEHOLD

Situated in the Chalcots Estate this property an exceptional opportunity to purchase a well-appointed flat which spans an impressive 818 square feet. Modernised and in a contemporary style this property has a spacious reception room, two large double bedrooms, a separate kitchen and lovely bathroom. The property has beautiful views across London and benefits from newly fitted floor to ceiling windows.

Moments from the amenities of Primrose Hill, Camden and Swiss Cottage the location is highly desirable.

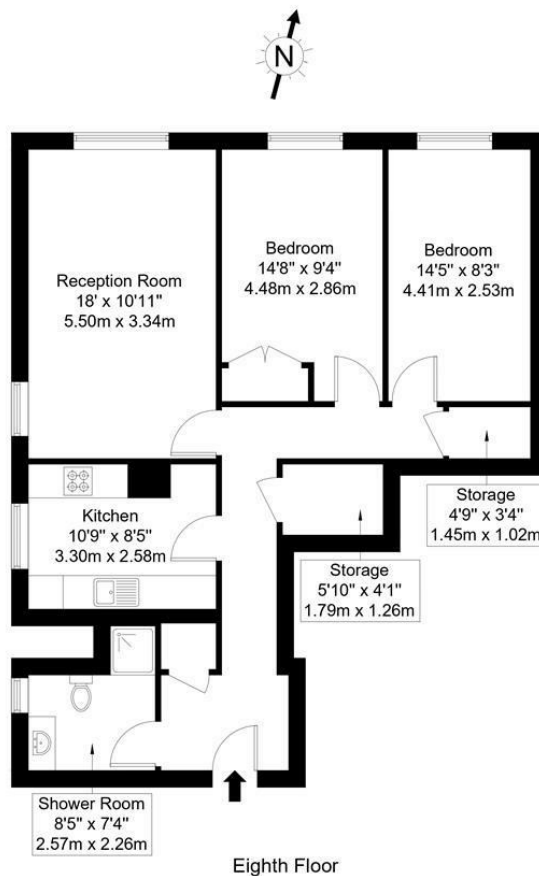
Perfect as a long-term rental investment or a London home.

Equidistant to Swiss Cottage station and Chalk Farm Tube stations.



Fellows Road, NW3 3JP

Approx Gross Internal Area = 74.9 sq m / 806 sq ft

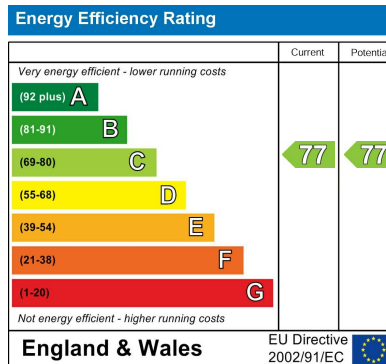
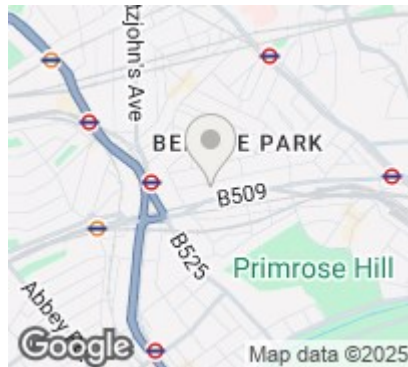


Ref :

Copyright

**B L E U
P L A N**

The Floor plan is not to scale and measurements and areas shown are approximate and therefore should be used for illustrative purposes only. The plan has been prepared in accordance with the RICS code of Measuring Practice and whilst we have confidence in the information produced it must not be relied on. Maximum lengths and widths are represented on the floor plan. If there is any aspect of particular importance, you should carry out or commission your own inspection of the property.
Copyright @ BleuPlan



Agents Note: Whilst every care has been taken to prepare these particulars, they are for guidance purposes only. All measurements are approximate and are for general guidance purposes only and whilst every care has been taken to ensure their accuracy, they should not be relied upon and potential buyers/tenants are advised to recheck the measurements

London

PMP International

94 Belsize Lane

Belsize Park

London

NW3 5BE

020 7701 2878

info@pmpi.co.uk

www.pmpi.co.uk

PMP | INTERNATIONAL