



PARK ROAD

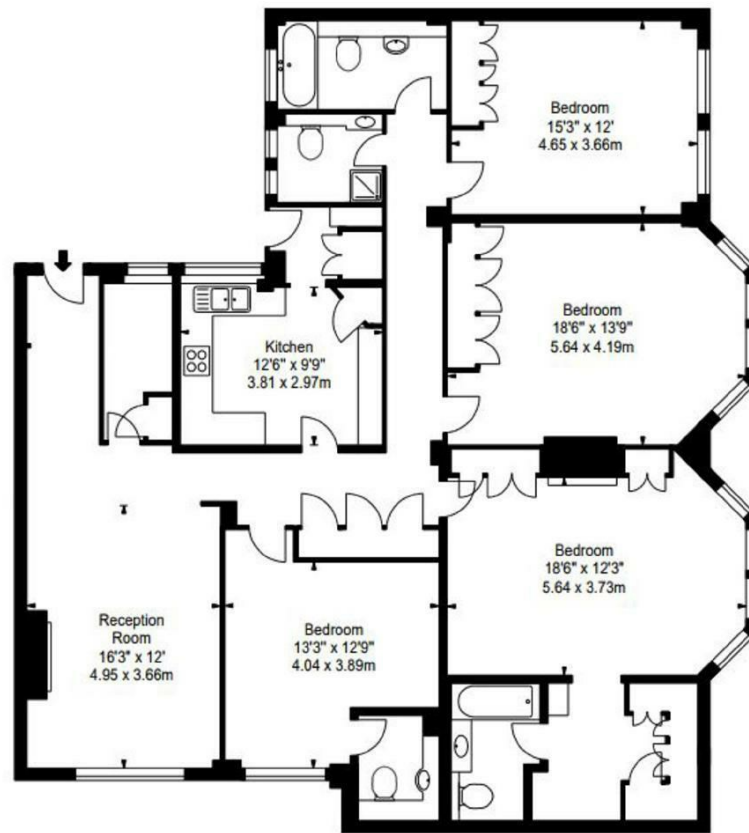
ST JOHNS WOOD, NW8

£1,615 PER WEEK

A newly refurbished 3 bedroom 2 bathroom apartment located in a prestigious mansion building offering fabulous views over Regents Park. The apartment comprises a double reception room, fitted kitchen, 3 bedrooms and 2 bathrooms (with an en-suite to the master).

The apartment offers easy access to the famous Lords Cricket Ground, the open spaces of Regent's Park, along with all the local shops, bars, restaurants located on St John's Wood High Street.

PMP | INTERNATIONAL



Energy Efficiency Rating		
	Current	Potential
Very energy efficient - lower running costs		
(92 plus) A		
(81-91) B		
(69-80) C		
(55-68) D		
(39-54) E		
(21-38) F		
(1-20) G	1	1
Not energy efficient - higher running costs		
England & Wales	EU Directive 2002/91/EC	

Agents Note: Whilst every care has been taken to prepare these particulars, they are for guidance purposes only. All measurements are approximate and are for general guidance purposes only and whilst every care has been taken to ensure their accuracy, they should not be relied upon and potential buyers/tenants are advised to recheck the measurements

London
PMP International
94 Belsize Lane
Belsize Park
London
NW3 5BE

020 7701 2878
info@pmpi.co.uk
www.pmpi.co.uk

PMP | INTERNATIONAL