



## HOMER STREET LONDON, W1H

£2,500 PER MONTH

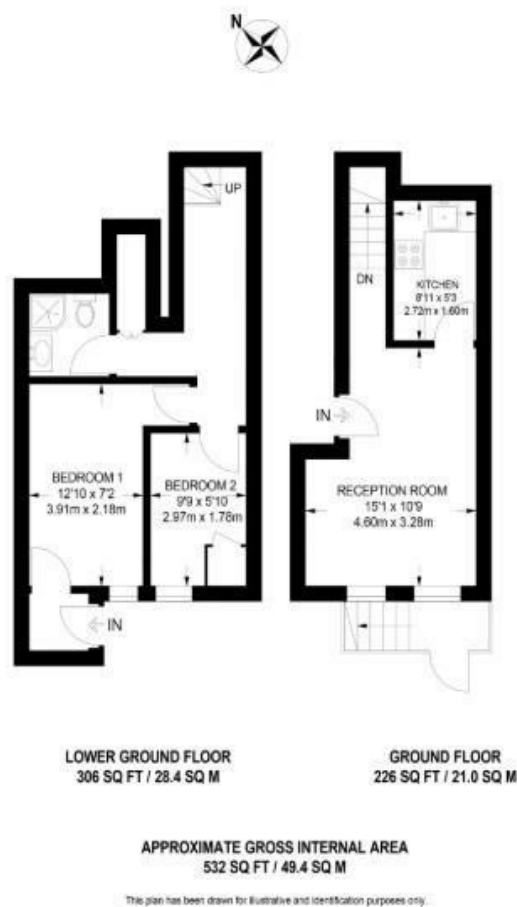
Situated in a highly desirable area just moments from local amenities, this stylish two-bedroom apartment offers modern living in a sought-after location. The property features an open-plan reception area, a contemporary fully fitted kitchen, and ample storage throughout.

Enjoy the vibrant atmosphere of Marylebone Village with its fashionable shops, bars, cafes, and restaurants, all nearby. The beautiful open spaces of Regent's Park are also within easy reach. This split-level period conversion is ideally located for convenient access to Edgware Road Underground station.

The accommodation comprises a bright reception room semi-open to a modern kitchen, two spacious bedrooms and a sleek shower room. The apartment benefits from hardwood floors throughout and is offered furnished.

Additionally, it is conveniently positioned close to excellent transport links via Baker Street, Marylebone Rail, and Edgware Road Stations, as well as the amenities at Paddington Basin.

**PMP** | INTERNATIONAL



Energy Efficiency Rating		
	Current	Potential
Very energy efficient - lower running costs		
(92 plus) <b>A</b>		
(81-91) <b>B</b>		
(69-80) <b>C</b>		
(55-68) <b>D</b>		
(39-54) <b>E</b>		
(21-38) <b>F</b>		
(1-20) <b>G</b>		
Not energy efficient - higher running costs		
<b>England &amp; Wales</b>	EU Directive 2002/91/EC	

Agents Note: Whilst every care has been taken to prepare these particulars, they are for guidance purposes only. All measurements are approximate and are for general guidance purposes only and whilst every care has been taken to ensure their accuracy, they should not be relied upon and potential buyers/tenants are advised to recheck the measurements

London  
PMP International  
94 Belsize Lane  
Belsize Park  
London  
NW3 5BE

020 7701 2878  
info@pmpi.co.uk  
www.pmpi.co.uk

**PMP** | INTERNATIONAL