



Montagu Mansions, London, W1U
£4,100 Per Month



Montagu Mansions, London, W1U

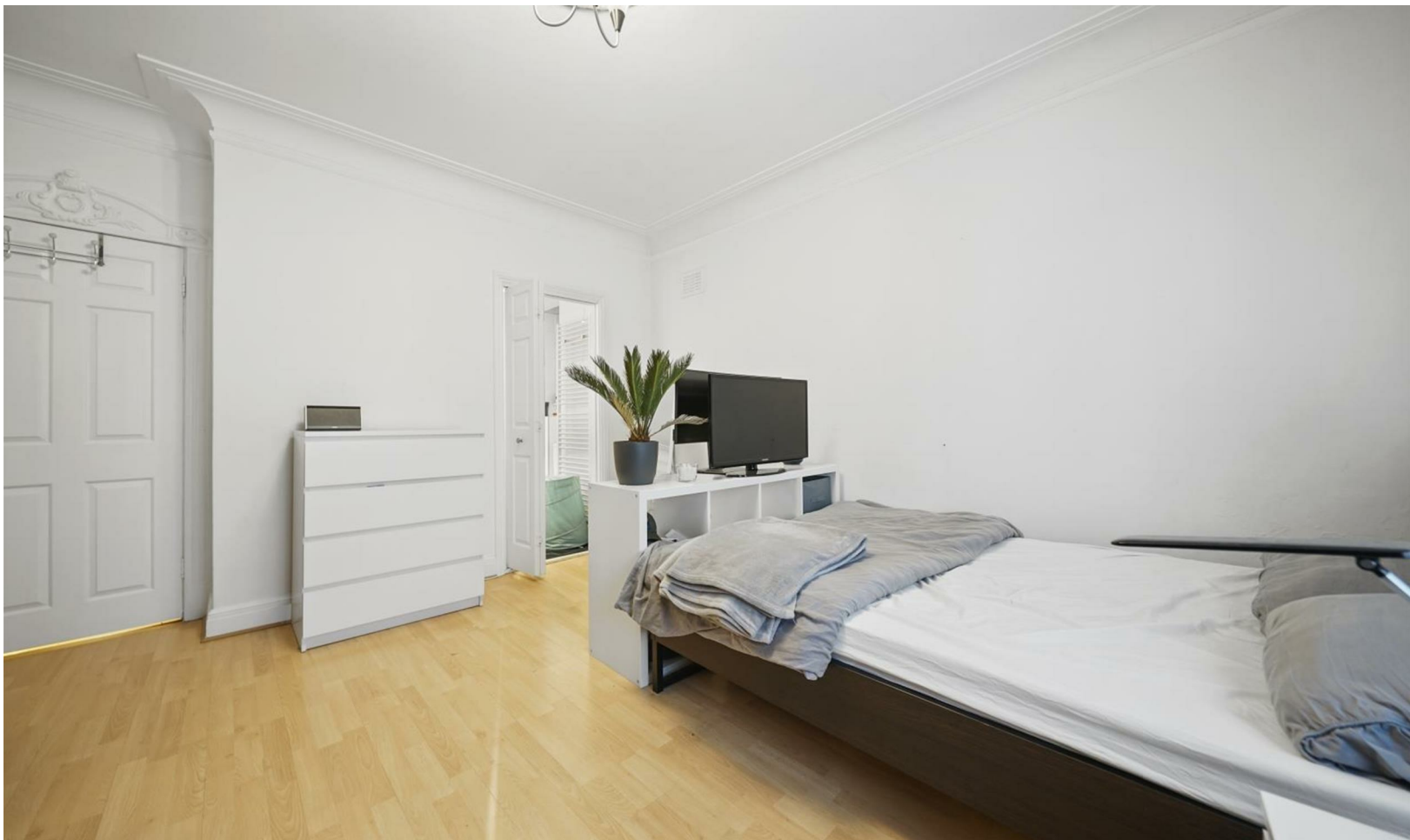
£4,100 Per Month

Excellent 2 bed apartment in Montagu Mansions, a portered red brick mansion building located just behind Baker Street, W1.

The flat comprises of a spacious reception room/dining room, separate fully fitted kitchen, 2 double bedrooms and 2 bathrooms (one en-suite) and is offered in good decoration throughout with period features.

The building is a very popular red brick mansion building located just behind the amenities of Baker Street which have an array of shops, bars, restaurants and cafes. Baker Street also offers excellent transport links including Baker Street Underground Station (Jubilee, Metropolitan, Circle and Hammersmith Lines). LBS (London Business School) and Westminster University is within a walking distance to the flat also.

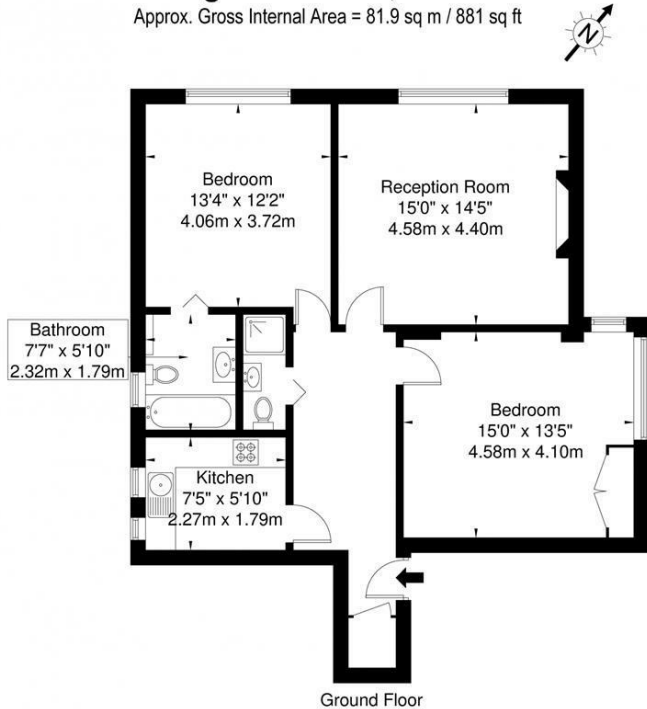
Viewings are highly recommended.



Floor Plans

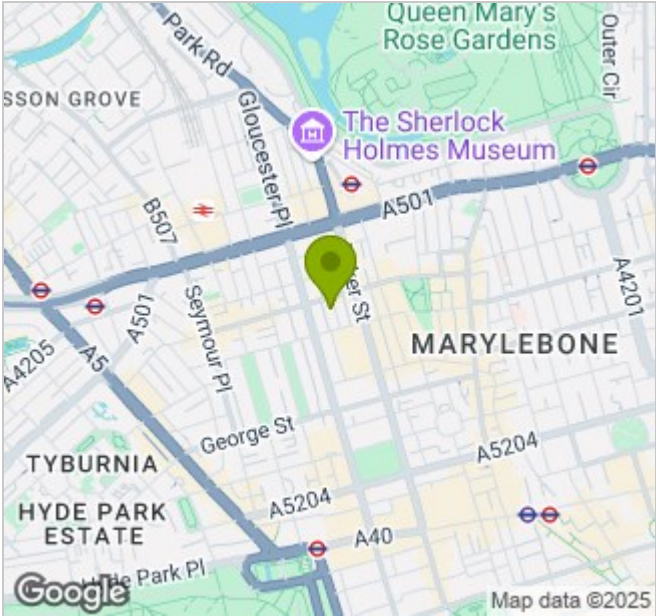
Montagu Mansions, W1U 6LG

Approx. Gross Internal Area = 81.9 sq m / 881 sq ft

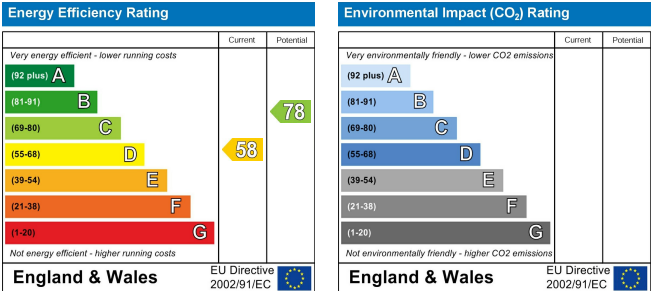


Ref Copyright BLEU PLAN
Disclaimer : Floor plan measurements are approximate and are for illustrative purposes only
While we do not doubt the floor plan accuracy and completeness, you or your advisors should
conduct a careful, independent investigation of the property in respect of monetary valuation

Area Map



Energy Performance Graph



73 Baker Street
London W1U 6RD
T 020 7034 1414
E info@primemetro.co.uk

1 Northway's Parade
Finchley Road, London NW3 5EN
T 020 7701 2878
E infoswiss@primemetro.co.uk