



CASTLETOWN ROAD LONDON, W14

£2,600 PER MONTH

This beautifully 2 bedroom apartment offers a stylish and comfortable living space just moments from West Kensington and Barons Court stations. Boasting two spacious double bedrooms and bright reception room, the property is ideal for students and sharers alike.

Highlights include a generous reception room, a separate modern kitchen with eat-in area, contemporary bathroom and two double bedrooms. The home benefits from being excellently located with transport links via the District and Piccadilly Lines, providing easy access to central London and beyond.


Located close to vibrant local shops, bars, and restaurants, this property combines convenience with stylish urban living. Perfect for those seeking a home in a desirable area.

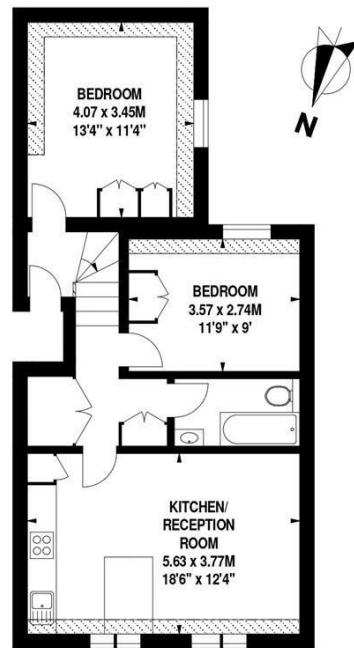
PMP | INTERNATIONAL

Castletown Road, W14

Approximate gross internal area

60 sq m / 646 sq ft

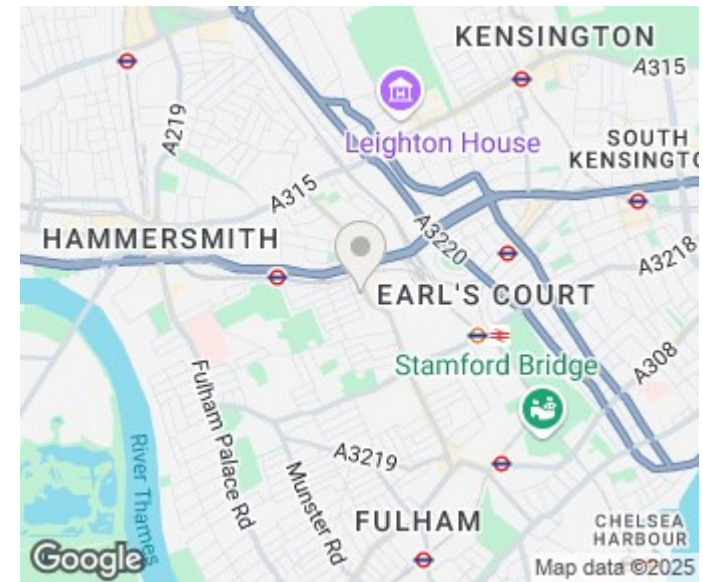
 Under 1.5m head height




Floor Plan produced for Atlas Properties by Mays Floorplans © . Tel 020 3397 4594

Illustration for identification purposes only, not to scale

All measurements are maximum, and include wardrobes and window bays where applicable



Energy Efficiency Rating		
	Current	Potential
Very energy efficient - lower running costs		
(92 plus) A		
(81-91) B		
(69-80) C		
(55-68) D		
(39-54) E		
(21-38) F		
(1-20) G		
Not energy efficient - higher running costs		
England & Wales	EU Directive 2002/91/EC	

Agents Note: Whilst every care has been taken to prepare these particulars, they are for guidance purposes only. All measurements are approximate and are for general guidance purposes only and whilst every care has been taken to ensure their accuracy, they should not be relied upon and potential buyers/tenants are advised to recheck the measurements

London
PMP International
94 Belsize Lane
Belsize Park
London
NW3 5BE

020 7701 2878
info@pmpi.co.uk
www.pmpi.co.uk

PMP | INTERNATIONAL