

FULHAM ROAD LONDON, SW3

£1,000 PER WEEK

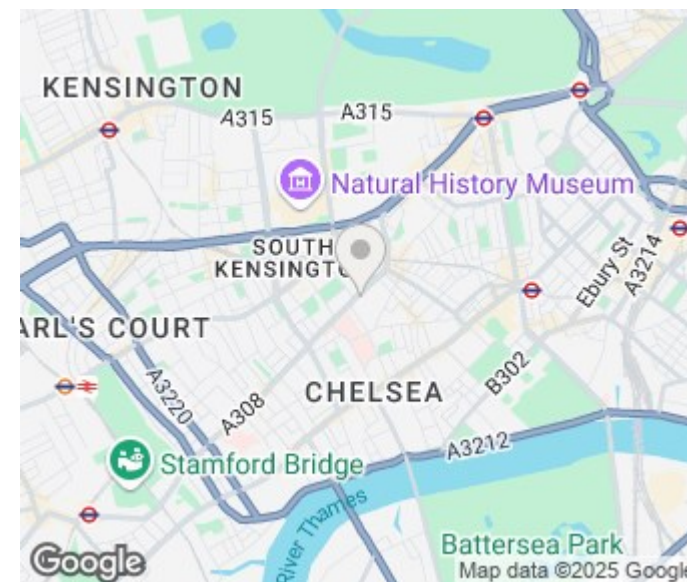
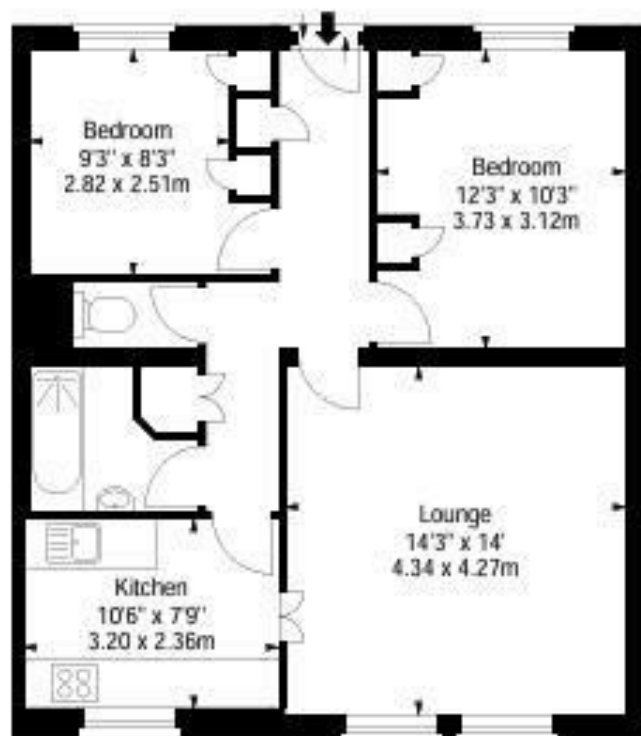
Luxuriously Designed | Two-Bedroom Apartment | High-end Amenities | Concierge Service

This beautiful, newly renovated two-bedroom apartment, designed to the highest standard, spans 675 sq ft and is ideally located in the heart of South Kensington.

The apartment boasts a spacious and bright reception room that flows seamlessly into a contemporary open-plan kitchen, featuring high-end, fully integrated appliances, including a dishwasher, fridge-freezer, oven, and microwave, all set against sleek stone worktops.

Both double bedrooms are generously sized, offering ample storage, while the modern fitted bathroom is finished to a superb standard. Additionally, the property benefits from a convenient guest cloakroom.

PMP | INTERNATIONAL



Energy Efficiency Rating		
	Current	Potential
Very energy efficient - lower running costs		
(92 plus) A		
(81-91) B		
(69-80) C		
(55-68) D		
(39-54) E		
(21-38) F		
(1-20) G		
Not energy efficient - higher running costs		
England & Wales	EU Directive 2002/91/EC	

Agents Note: Whilst every care has been taken to prepare these particulars, they are for guidance purposes only. All measurements are approximate and are for general guidance purposes only and whilst every care has been taken to ensure their accuracy, they should not be relied upon and potential buyers/tenants are advised to recheck the measurements

London
PMP International
94 Belsize Lane
Belsize Park
London
NW3 5BE

020 7701 2878
info@pmpi.co.uk
www.pmpi.co.uk

PMP | INTERNATIONAL