



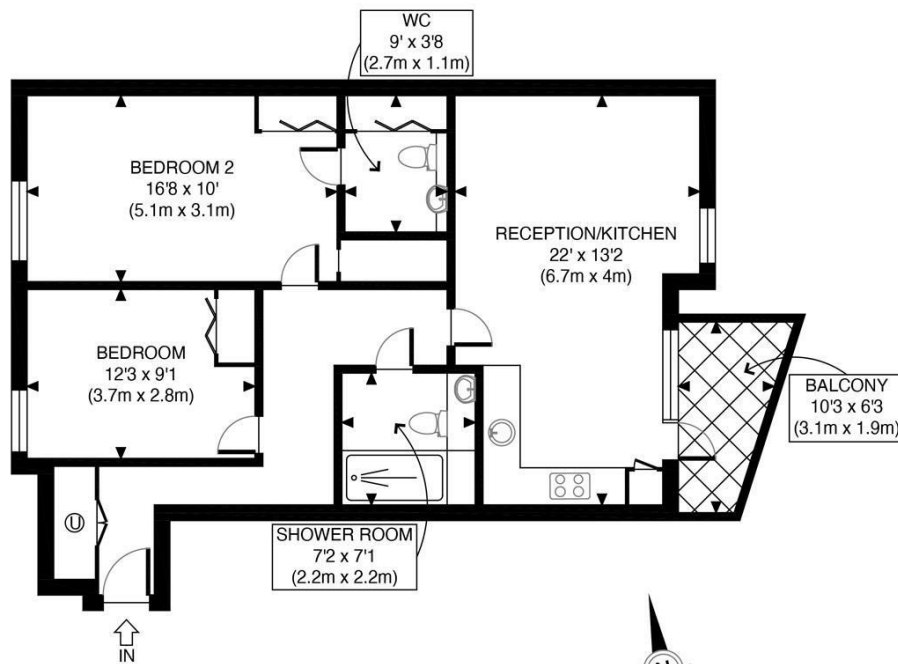
FREDA STREET LONDON, SE16

£2,750 PER MONTH

Stunning property in Parker Building on Freda Street, London - a location that exudes elegance and sophistication. This stunning property boasts a modern design with 1 reception room, 2 bedrooms, and 2 bathrooms, providing ample space for comfortable living.

Situated in a new build constructed in 2014, this luxurious home spans across 775 sq ft, offering a contemporary and stylish living environment. The property is beautifully designed, perfect for those who appreciate the finer things in life.

PMP | INTERNATIONAL



FIRST FLOOR
GROSS INTERNAL
FLOOR AREA 792 SQ FT

APPROX. GROSS INTERNAL FLOOR AREA 792 SQ FT / 74 SQM	
Disclaimer: Floor plan measurements are approximate and are for illustrative purposes only. While we do not doubt the floor plan accuracy and completeness, you or your advisors should conduct a careful, independent investigation of the property in respect of monetary valuation	
Parker Building	
date	31/05/24
photoplan	



Energy Efficiency Rating		
	Current	Potential
Very energy efficient - lower running costs		
(92 plus) A		
(81-91) B	84	84
(69-80) C		
(55-68) D		
(39-54) E		
(21-38) F		
(1-20) G		
Not energy efficient - higher running costs		
England & Wales	EU Directive 2002/91/EC	

Agents Note: Whilst every care has been taken to prepare these particulars, they are for guidance purposes only. All measurements are approximate and are for general guidance purposes only and whilst every care has been taken to ensure their accuracy, they should not be relied upon and potential buyers/tenants are advised to recheck the measurements

London
PMP International
94 Belsize Lane
Belsize Park
London
NW3 5BE

020 7701 2878
info@pmpi.co.uk
www.pmpi.co.uk

PMP | INTERNATIONAL