



BOYDELL COURT

ST JOHNS WOOD, NW8

£1,250 PER WEEK

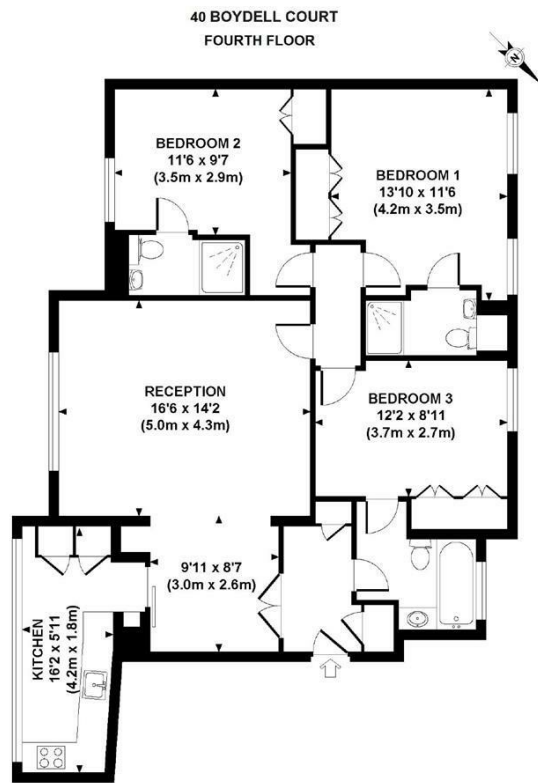
Heating & Hot Water Included *Pet friendly *

Immaculate newly refurbished apartment set in a gated, purpose built development a short distance from St Johns Wood and Swiss Cottage.

Boasting bespoke decor and high quality furnishings throughout, and comprising of a grand reception and dining room with attractive tiled flooring, contemporary German designed, Bosch fully fitted kitchen, three double bedrooms with built in storage all benefitting from en-suites bathrooms with multi-jet showers.

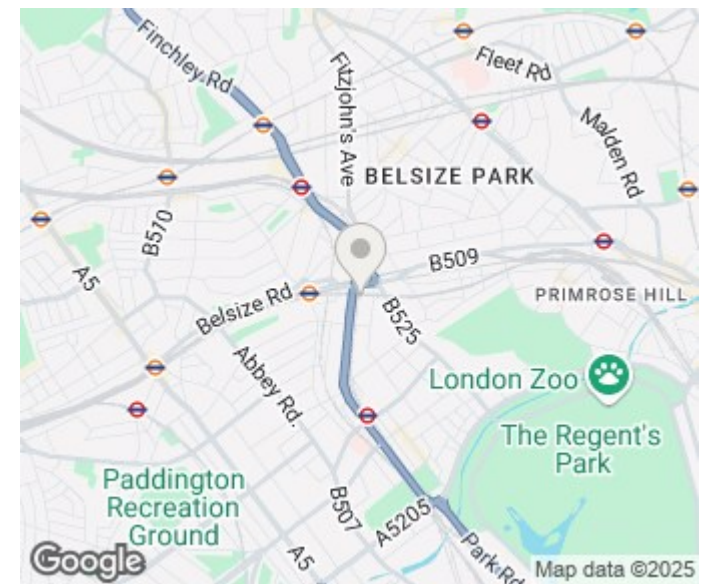
The Development further boasts an on-site porter, double glazed windows, air-condition, lift access and secure off street parking (extra spaces can be purchased at an extra cost).

PMP | INTERNATIONAL



APPROXIMATE GROSS INTERNAL AREA 1062 SQ FT / 99 SQ M

Although every attempt has been made to ensure accuracy, all measurements are approximate.
The floor plan is for illustrative purposes only and not to scale. Measured in accordance to RICS standards.
DE-PHOTOGRAPHY.NET



Energy Efficiency Rating		
	Current	Potential
Very energy efficient - lower running costs		
(92 plus) A		
(81-91) B		
(69-80) C	69	70
(55-68) D		
(39-54) E		
(21-38) F		
(1-20) G		
Not energy efficient - higher running costs		
England & Wales	EU Directive 2002/91/EC	

Agents Note: Whilst every care has been taken to prepare these particulars, they are for guidance purposes only. All measurements are approximate and are for general guidance purposes only and whilst every care has been taken to ensure their accuracy, they should not be relied upon and potential buyers/tenants are advised to recheck the measurements

London
PMP International
94 Belsize Lane
Belsize Park
London
NW3 5BE

020 7701 2878
info@pmpi.co.uk
www.pmpi.co.uk

PMP | INTERNATIONAL