



PUMP HOUSE CRESCENT

BRENTFORD, TW8

£915,000
LEASEHOLD

Located in the Brentford area, this modern and spacious three-bedroom apartment offers an exceptional living experience complemented by beautiful views of the River Thames.

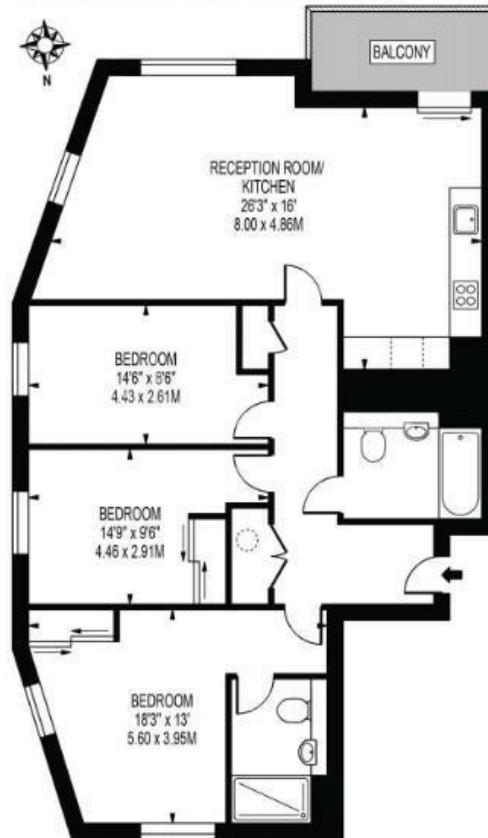
The expansive layout features three generously-sized bedrooms, each equipped with built-in wardrobes to maximize storage space. The property also benefits from two sleek, modern bathrooms, designed for both style and functionality. Additional features include private and secure underground parking, access to a fully equipped gym, and the convenience of an on-site concierge service, ensuring all your needs are met with ease.

With its prime location just moments from Key Bridge Station, which offers direct links to Waterloo Station and central London, this property perfectly balances comfort and convenience, making it an ideal home for anyone seeking a modern urban lifestyle.

PMP | INTERNATIONAL

HYPERION TOWER

APPROXIMATE GROSS INTERNAL FLOOR AREA: 1059 SQ FT - 98.37 SQ M



Energy Efficiency Rating		
	Current	Potential
Very energy efficient - lower running costs		
(92 plus) A		
(81-91) B		
(69-80) C		
(55-68) D		
(39-54) E		
(21-38) F		
(1-20) G		
Not energy efficient - higher running costs		
England & Wales	EU Directive 2002/91/EC	

Agents Note: Whilst every care has been taken to prepare these particulars, they are for guidance purposes only. All measurements are approximate and are for general guidance purposes only and whilst every care has been taken to ensure their accuracy, they should not be relied upon and potential buyers/tenants are advised to recheck the measurements

London
PMP International
94 Belsize Lane
Belsize Park
London
NW3 5BE

020 7701 2878
info@pmpi.co.uk
www.pmpi.co.uk

PMP | INTERNATIONAL