



## CANFIELD PLACE NW6

£550,000  
LEASEHOLD

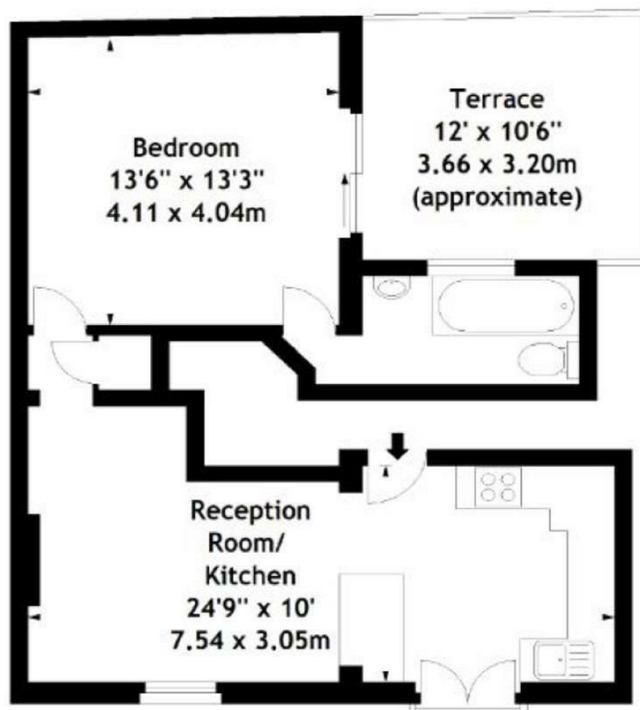
A charming 1 bedroom apartment is set within a delightful mews and located on the first floor of a conversion. This well proportioned property benefits from a large open plan living area, with a well appointed kitchen and lovely bedroom. The large terrace is a superb feature of the property and is sure to be made use of in the Summer sun.

The property is conveniently located moments from the amenities of Finchley Road/Swiss cottage, just a few steps from Finchley Road tube station (Jubilee and Metropolitan lines zone 2).

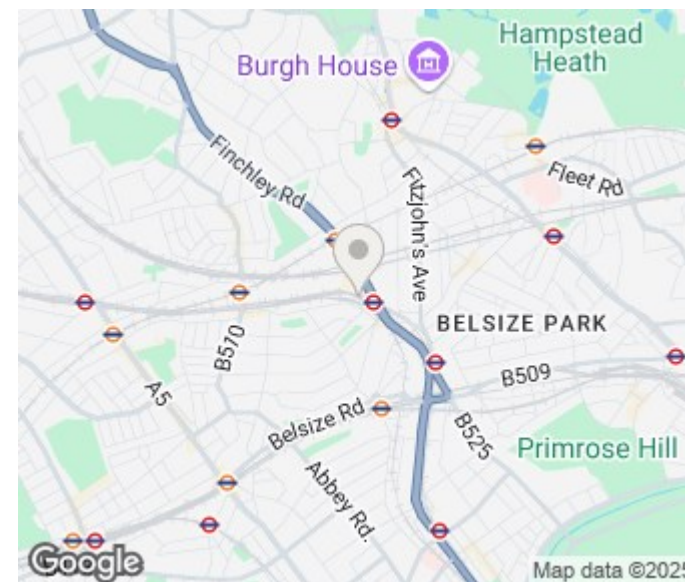
Enquire now to avoid disappointment.

**PMP** | INTERNATIONAL

Canfield Place, NW6  
Approx. Gross Internal Area  
521 Sq Ft - 48.40 Sq M



First Floor



Energy Efficiency Rating		
	Current	Potential
Very energy efficient - lower running costs		
(92 plus) <b>A</b>		
(81-91) <b>B</b>		
(69-80) <b>C</b>		
(55-68) <b>D</b>		
(39-54) <b>E</b>		
(21-38) <b>F</b>		
(1-20) <b>G</b>	<b>1</b>	<b>1</b>
Not energy efficient - higher running costs		
<b>England &amp; Wales</b>	EU Directive 2002/91/EC	

Agents Note: Whilst every care has been taken to prepare these particulars, they are for guidance purposes only. All measurements are approximate and are for general guidance purposes only and whilst every care has been taken to ensure their accuracy, they should not be relied upon and potential buyers/tenants are advised to recheck the measurements

London  
PMP International  
94 Belsize Lane  
Belsize Park  
London  
NW3 5BE

020 7701 2878  
info@pmpi.co.uk  
www.pmpi.co.uk

**PMP** | INTERNATIONAL