



47 BELSIZE ROAD

£470,000

LEASEHOLD

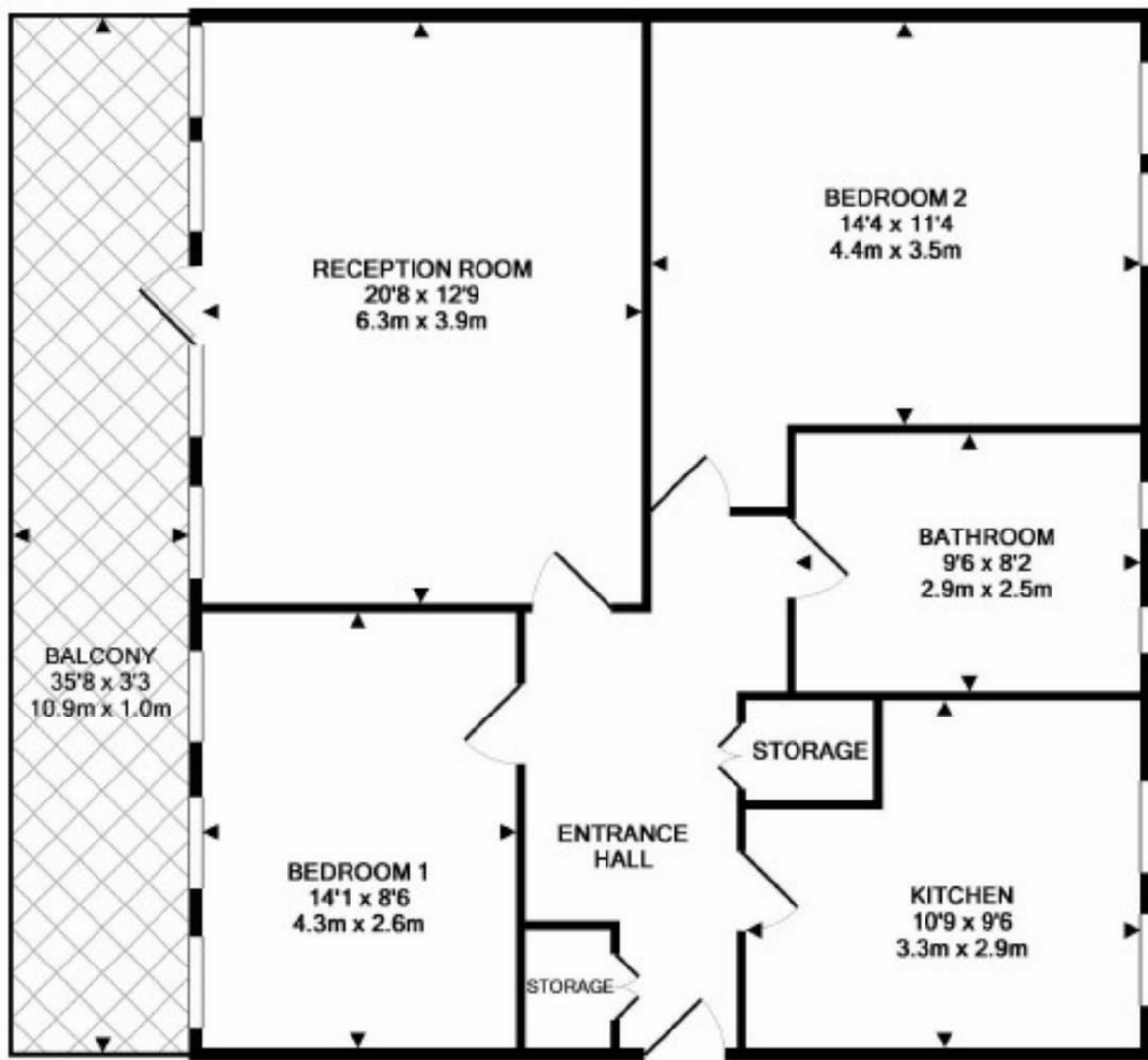
CASH BUYERS ONLY. LEASEHOLD 47 YEARS REMAINING.

This beautifully presented 850 square foot two double bedroom apartment with large private terrace situated on the top floor of a private development just a minutes walk from South Hampstead station.

Comprising a large reception dining room, a separate fully fitted integrated kitchen, two double bedrooms, a fully tiled family bathroom, ample built in storage and private terrace.

Ideally located literally just a minutes walk from South Hampstead station (Overground) and a two minutes walk from Swiss Cottage (Jubilee).





Energy Efficiency Rating		
	Current	Potential
Very energy efficient - lower running costs		
(92 plus) A		
(81-91) B		
(69-80) C		
(55-68) D		
(39-54) E		
(21-38) F		
(1-20) G		
Not energy efficient - higher running costs		
England & Wales	EU Directive 2002/91/EC	

Agents Note: Whilst every care has been taken to prepare these particulars, they are for guidance purposes only. All measurements are approximate and are for general guidance purposes only and whilst every care has been taken to ensure their accuracy, they should not be relied upon and potential buyers/tenants are advised to recheck the measurements

London

PMP International
94 Belsize Lane
Belsize Park
London
NW3 5BE

020 7701 2878

info@pmpi.co.uk
www.pmpi.co.uk

PMP | INTERNATIONAL